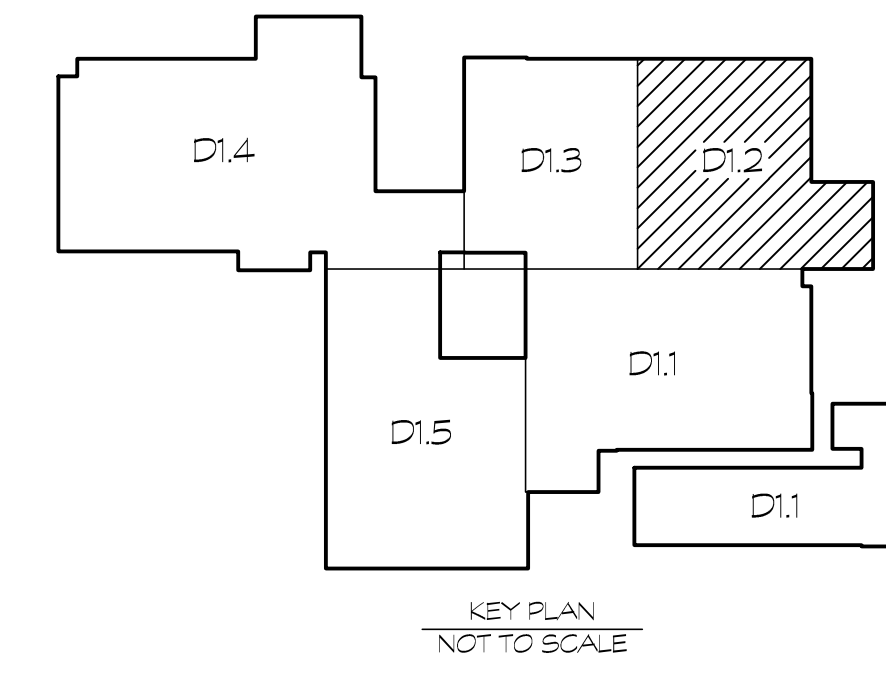


- DEMOLITION NOTES**
- REMOVE (E) WINDOW FRAME, GLAZING & ASSOCIATED WINDOW TREATMENTS - PATCH & REPAIR ADJACENT WALLS AS REQUIRED.
  - REMOVE (E) DOOR & FRAME - PATCH & REPAIR ADJACENT WALLS & FLOOR AS REQUIRED.
  - REMOVE (E) DOOR & HARDWARE, PATCH & REPAIR (E) ADJACENT HOLLOW METAL FRAMES AS REQUIRED.
  - REMOVE (E) HOLLOW METAL FRAME, PATCH & REPAIR (E) MASONRY AS REQUIRED.
  - REMOVE (E) STL. ANGLE OVERHEAD DOOR STOP, GRIND FLUSH w/ ADJACENT STL. & PAINT EXPOSED EDGE.
- ABATEMENT NOTES**
- REMOVE (E) LAMINATED/PORCELAIN PANEL, & FRAME - REFER TO ABATEMENT SPECIFICATIONS, PATCH & REPAIR (E) MASONRY AS REQUIRED.



**AREA '2' FLOOR PLAN - DEMOLITION**

1/8" = 1'-0"  
1/8" = 1'-0"

SCALE 0 5 10 15 20 FEET

1  
D1.2

NORTH

DRAWINGS INTENT IS TO INDICATE GENERAL ARRANGEMENT, DESIGN AND DIMENSIONS. IT SHALL NOT BE SCALED FOR CONSTRUCTION. SEE SPECIFICATIONS FOR DIMENSIONS.

GROUPS THAT THESE DOCUMENTS WERE PREPARED OR APPROVED BY ARE REGISTERED PROFESSIONAL ARCHITECTS UNDER THE LAWS OF THE STATE OF MARYLAND. LICENSE NO. 8078 EXPIRES DATE 09/20/16

**BUSHEY FEIGHT MORIN ARCHITECTS INC.**  
472 North Potomac Street, Hagerstown, Md 21740  
301-733-5600 Fax 301-733-5612  
Email: BFM@BFMArchitects.com

© copyright 2014, Bushey Feight Morin Architects, Inc.

**BFM**

**BFM# 11071 WCP# BOONSBORO HIGH SCHOOL**  
**PSC# 21001.14SR WINDOW & DOOR REPLACEMENT**

AREA '2' FLR. PLAN DEMO  
**D1.2**  
1 OF SHEETS  
DATE: 1/28/14