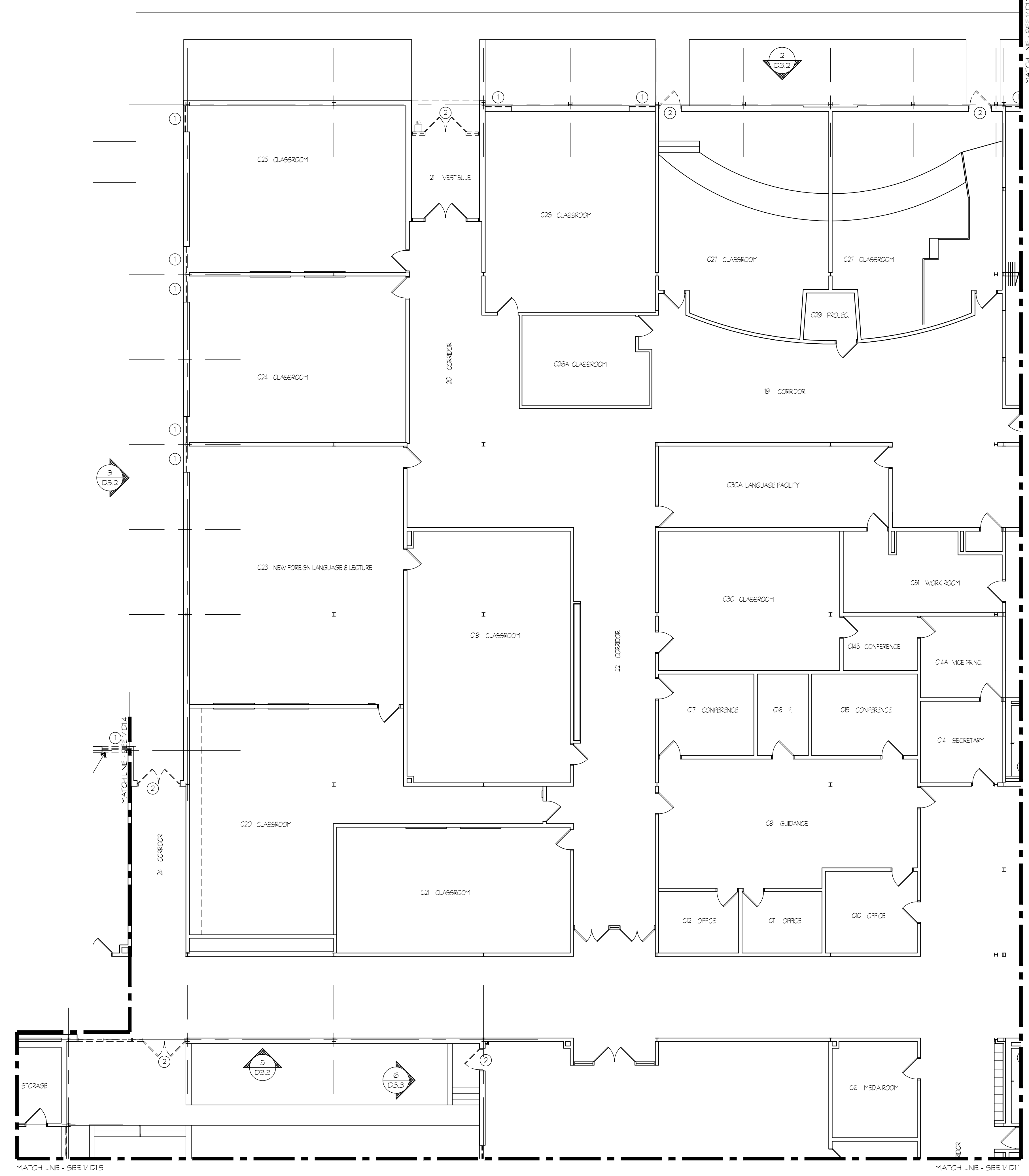
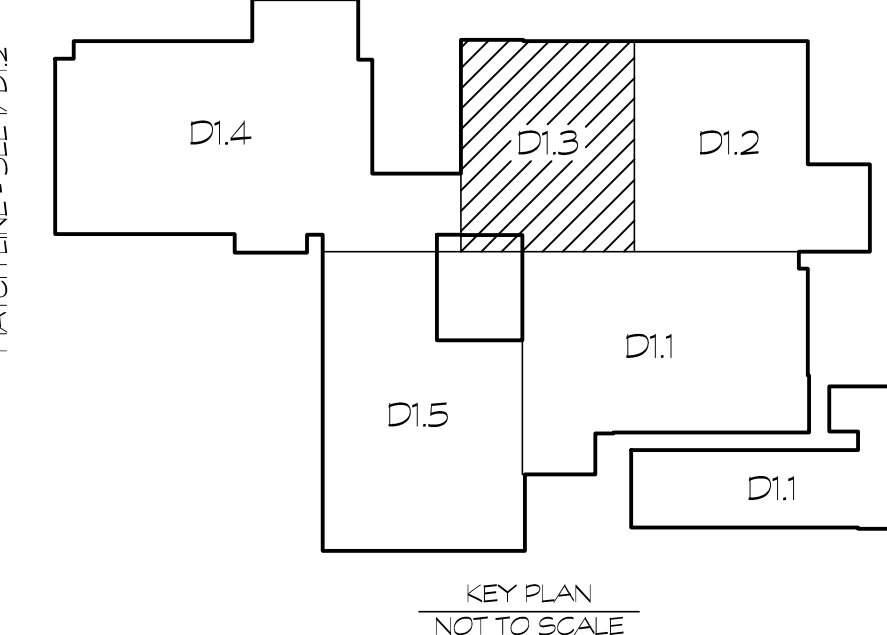


DEMOLITION NOTES

- ① REMOVE (E) WINDOW FRAME, GLAZING & ASSOCIATED WINDOW TREATMENTS - PATCH & REPAIR ADJACENT WALLS AS REQUIRED.
- ② REMOVE (E) DOOR & FRAME - PATCH & REPAIR ADJACENT WALLS & FLOOR AS REQUIRED.
- ③ REMOVE (E) DOOR & HARDWARE - PATCH & REPAIR (E) ADJACENT HOLLOW METAL FRAMES AS REQUIRED.
- ④ REMOVE (E) HOLLOW METAL FRAME - PATCH & REPAIR (E) MASONRY AS REQUIRED.
- ⑤ REMOVE (E) STL. ANGLE OVER-HEAD DOOR STOP. GRIND FLUSH w/ ADJACENT STL. & PAINT EXPOSED EDGE.

ABATEMENT NOTES

- ① REMOVE (E) LAMINATED/ PORCELAIN PANEL & FRAME. REFER TO ABATEMENT SPECIFICATIONS. PATCH & REPAIR (E) MASONRY AS REQUIRED.



DRAWINGS INTENT IS TO INDICATE GENERAL ARRANGEMENT, DESIGN AND DIMENSIONS. IT SHALL NOT BE SCALED FOR CONSTRUCTION. SEE SPECIFICATIONS FOR DIMENSIONS AND VERIFICATION OF DIMENSIONS.

GROUPS THAT THESE DOCUMENTS WERE PREPARED OR APPROVED BY ARE REGISTERED AND LICENSED ARCHITECTS UNDER THE LAWS OF THE STATE OF MARYLAND.
 LICENSE NO. 8075
 EXPIRES DATE 09/01/16

BUSHEY FEIGHT MORIN ARCHITECTS INC.
 473 North Potomac Street - Hagerstown, Md 21740
 301-733-5600 Fax 301-733-5612
 Email: BFM@BFM-Architects.com

BFM

WCP's - BOONSBORO HIGH SCHOOL WINDOW & DOOR REPLACEMENT
 BFM# 11071
 PSC# 21001.14SR

© copyright 2014, Bushey Feight Morin Architects, Inc.

AREA '3' FLOOR PLAN - DEMOLITION

1/8" = 1'-0"
 1/8" = 1'-0"

SCALE

1 OF SHEETS

DATE: 1/28/14

D1.3

1 OF SHEETS

DATE: 1/28/14