

# CLUBHOUSE RENOVATION

# REGENCY

## AT DOMINION VALLEY ALLEY

### 15351 CHAMPIONSHIP DRIVE, HAYMARKET, VA

### DRAWING INDEX

- A.0.01 - COVER SHEET, INDEX, GENERAL NOTES, ETC.
- A.0.02 - LIFE SAFETY PLAN, GENERAL OCCUPANCY CALCS
- X1.01 - EXISTING GROUND LEVEL FLOOR PLAN
- X1.02 - EXISTING MAIN LEVEL FLOOR PLAN
- D1.01 - GROUND LEVEL DEMOLITION PLAN
- D1.02 - MAIN LEVEL DEMOLITION PLAN
- A1.01 - GROUND LEVEL FLOOR PLAN
- A1.02 - MAIN LEVEL FLOOR PLAN
- A1.03 - GROUND LEVEL REFLECTED CEILING PLAN
- A1.04 - INTERIOR ELEVATIONS & DETAILS
- M1 - LEGEND AND GENERAL NOTES
- M2 - SECOND FLOOR PLAN
- M3 - SECOND FLOOR PLAN
- M4 - FIRST FLOOR PLAN
- E1 - LEGEND, SCHEDULES, DETAILS & NOTES
- E2 - ELECTRICAL SPECIFICATIONS
- E3 - GROUND FLOOR MECHANICAL & DEMOLITION PLANS
- E4 - GROUND FLOOR MECHANICAL & DEMOLITION PLANS
- E5 - GROUND FLOOR MECHANICAL & DEMOLITION PLANS

NOTE: ALL PLUMBING & FUEL GAS WORK HAS BEEN DELETED FROM SCOPE OF WORK SINCE PREVIOUS SUBMISSION

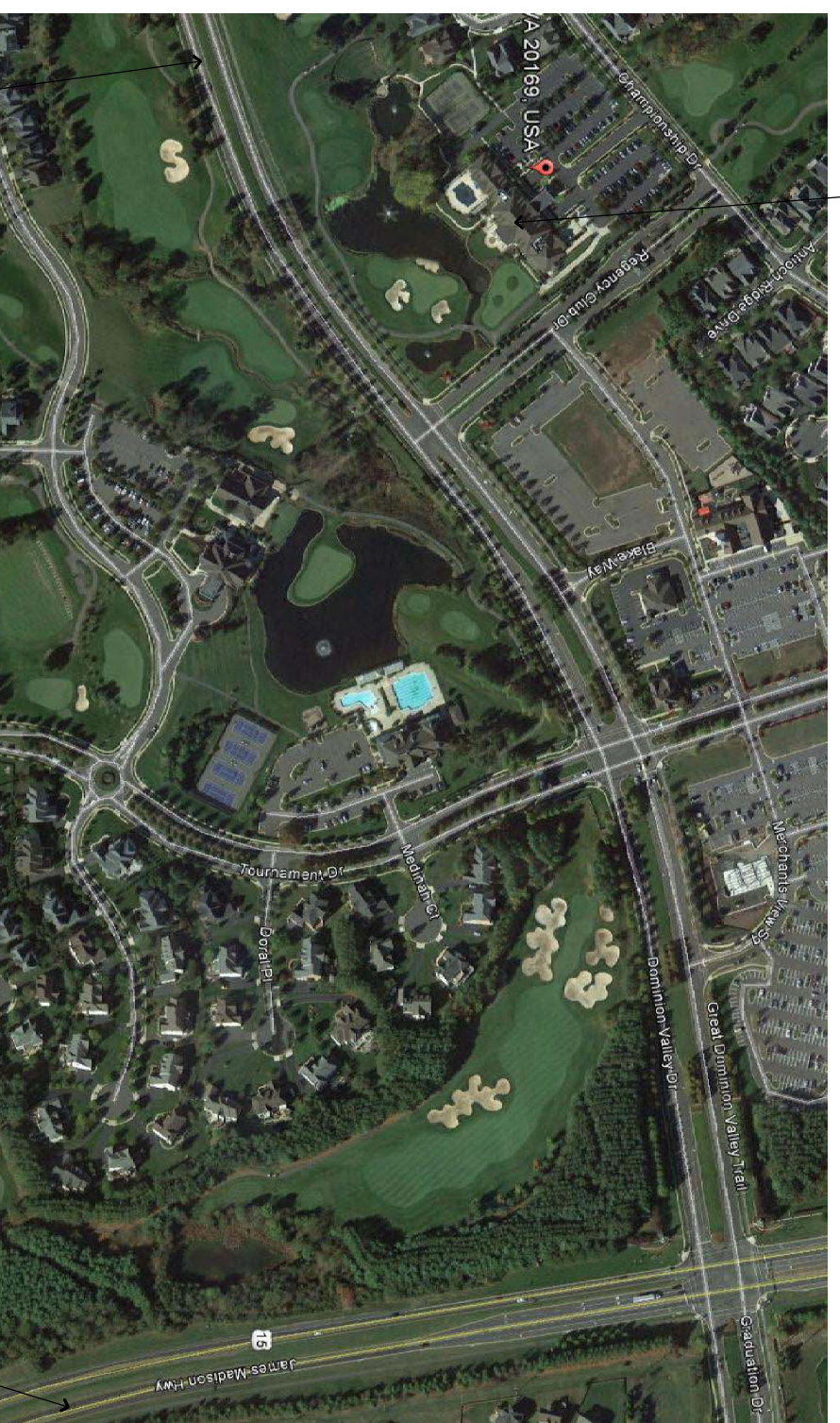
### CONSULTANTS

CONSULTING MECHANICAL & ELECTRICAL ENGINEERS  
 DUNLAP & PARTNER ENGINEERS  
 2112 A LEBANON AVE. SUITE 205  
 HAYMARKET, VA 23064  
 PH: (804) 556-4200  
 FAX: (804) 556-2928

### GENERAL NOTES

1. ALL DIMENSIONS ARE GIVEN TO FACE OF STRUCTURE OR CENTERLINE (NOTED BY ---) UNLESS OTHERWISE NOTED.
2. DO NOT SCALE THESE DRAWINGS. CALL ANY DIMENSIONS OR DISCREPANCIES IN DIMENSIONS TO THE ARCHITECT FOR CLARIFICATION.
3. THE CONTRACTOR SHALL VERIFY AND CHECK ALL DIMENSIONS & CONDITIONS BEFORE BEGINNING ANY WORK. THE CONTRACTOR SHALL BE RESPONSIBLE FOR THE SAME.
4. TRASH TO BE REMOVED DURING CONSTRUCTION SHALL BE REMOVED TO THE CURB OR TO THE DISPOSAL SITE AS REQUIRED BY CONTRACTOR.
5. THE CONTRACTOR SHALL VERIFY ALL LABOR MATERIALS & EQUIPMENT TO COMPLETE THE WORK AS CALLED FOR IN THE DRAWINGS.
6. THE CONTRACTOR SHALL COORDINATE ALL OPERATIONS WITH THE OWNER, SUCH AS SCHEDULING OF WORK, SPECIAL PERMITS, INSPECTIONS, ETC. THE CONTRACTOR SHALL BE RESPONSIBLE FOR OBTAINING ALL NECESSARY PERMITS, ETC. THE CONTRACTOR SHALL BE RESPONSIBLE FOR THE SAME.
7. THE CONTRACTOR SHALL VERIFY AND CHECK ALL DIMENSIONS & CONDITIONS BEFORE BEGINNING ANY WORK. THE CONTRACTOR SHALL BE RESPONSIBLE FOR THE SAME.
8. THE CONTRACTOR SHALL VERIFY AND CHECK ALL DIMENSIONS & CONDITIONS BEFORE BEGINNING ANY WORK. THE CONTRACTOR SHALL BE RESPONSIBLE FOR THE SAME.
9. THE CONTRACTOR SHALL VERIFY AND CHECK ALL DIMENSIONS & CONDITIONS BEFORE BEGINNING ANY WORK. THE CONTRACTOR SHALL BE RESPONSIBLE FOR THE SAME.
10. ALL WORK PERFORMED BY THE CONTRACTOR SHALL BE DONE IN A GOOD WORKMANSHIP MANNER AND TO THE APPROVAL AND ACCEPTANCE OF THE OWNER AND ARCHITECT.
11. THE CONTRACTOR SHALL BE RESPONSIBLE FOR THE WORK AND FOR THE PROTECTION OF THE WORK.
12. THE CONTRACTOR SHALL BE RESPONSIBLE FOR THE PROTECTION OF THE WORK AND FOR THE PROTECTION OF THE WORK.
13. THE CONTRACTOR SHALL BE RESPONSIBLE FOR THE PROTECTION OF THE WORK AND FOR THE PROTECTION OF THE WORK.
14. THE CONTRACTOR SHALL BE RESPONSIBLE FOR THE PROTECTION OF THE WORK AND FOR THE PROTECTION OF THE WORK.
15. THE CONTRACTOR SHALL BE RESPONSIBLE FOR THE PROTECTION OF THE WORK AND FOR THE PROTECTION OF THE WORK.

### VICINITY PLAN



PROJECT LOCATION - 15351 CHAMPIONSHIP DRIVE, HAYMARKET, VA 20164

### CODE INFORMATION

PROJECT NAME & ADDRESS:  
 RENOVATION AT DOMINION VALLEY CLUBHOUSE RENOVATION  
 15351 CHAMPIONSHIP DRIVE  
 HAYMARKET, VA 23064

JURISDICTION: PRINCE WILLIAM COUNTY, VA

APPLICABLE CODES:  
 2003 INTERNATIONAL MECHANICAL CODE  
 2004 INTERNATIONAL ELECTRICAL CODE  
 2004 INTERNATIONAL FIREBOYING CODE  
 2009 NATIONAL ELECTRICAL CODE  
 2009 NATIONAL ELECTRICAL CODE  
 2009 (C/CANSI A1171)

FULLY SPRINKLERED: YES (NO CHANGE FROM EXISTING)  
 CONSTRUCTION TYPE: 2B (NO CHANGE FROM EXISTING)

USE GROUP: PERMITTED USE AS 2 (A) 2 (B) 2 (C) 2 (D) 2 (E) 2 (F) 2 (G) 2 (H) 2 (I) 2 (J) 2 (K) 2 (L) 2 (M) 2 (N) 2 (O) 2 (P) 2 (Q) 2 (R) 2 (S) 2 (T) 2 (U) 2 (V) 2 (W) 2 (X) 2 (Y) 2 (Z) 2 (AA) 2 (AB) 2 (AC) 2 (AD) 2 (AE) 2 (AF) 2 (AG) 2 (AH) 2 (AI) 2 (AJ) 2 (AK) 2 (AL) 2 (AM) 2 (AN) 2 (AO) 2 (AP) 2 (AQ) 2 (AR) 2 (AS) 2 (AT) 2 (AU) 2 (AV) 2 (AW) 2 (AX) 2 (AY) 2 (AZ) 2 (BA) 2 (BB) 2 (BC) 2 (BD) 2 (BE) 2 (BF) 2 (BG) 2 (BH) 2 (BI) 2 (BJ) 2 (BK) 2 (BL) 2 (BM) 2 (BN) 2 (BO) 2 (BP) 2 (BQ) 2 (BR) 2 (BS) 2 (BT) 2 (BU) 2 (BV) 2 (BW) 2 (BX) 2 (BY) 2 (BZ) 2 (CA) 2 (CB) 2 (CC) 2 (CD) 2 (CE) 2 (CF) 2 (CG) 2 (CH) 2 (CI) 2 (CJ) 2 (CK) 2 (CL) 2 (CM) 2 (CN) 2 (CO) 2 (CP) 2 (CQ) 2 (CR) 2 (CS) 2 (CT) 2 (CU) 2 (CV) 2 (CW) 2 (CX) 2 (CY) 2 (CZ) 2 (DA) 2 (DB) 2 (DC) 2 (DD) 2 (DE) 2 (DF) 2 (DG) 2 (DH) 2 (DI) 2 (DJ) 2 (DK) 2 (DL) 2 (DM) 2 (DN) 2 (DO) 2 (DP) 2 (DQ) 2 (DR) 2 (DS) 2 (DT) 2 (DU) 2 (DV) 2 (DW) 2 (DX) 2 (DY) 2 (DZ) 2 (EA) 2 (EB) 2 (EC) 2 (ED) 2 (EE) 2 (EF) 2 (EG) 2 (EH) 2 (EI) 2 (EJ) 2 (EK) 2 (EL) 2 (EM) 2 (EN) 2 (EO) 2 (EP) 2 (EQ) 2 (ER) 2 (ES) 2 (ET) 2 (EU) 2 (EV) 2 (EW) 2 (EX) 2 (EY) 2 (EZ) 2 (FA) 2 (FB) 2 (FC) 2 (FD) 2 (FE) 2 (FF) 2 (FG) 2 (FH) 2 (FI) 2 (FJ) 2 (FK) 2 (FL) 2 (FM) 2 (FN) 2 (FO) 2 (FP) 2 (FQ) 2 (FR) 2 (FS) 2 (FT) 2 (FU) 2 (FV) 2 (FW) 2 (FX) 2 (FY) 2 (FZ) 2 (GA) 2 (GB) 2 (GC) 2 (GD) 2 (GE) 2 (GF) 2 (GG) 2 (GH) 2 (GI) 2 (GJ) 2 (GK) 2 (GL) 2 (GM) 2 (GN) 2 (GO) 2 (GP) 2 (GQ) 2 (GR) 2 (GS) 2 (GT) 2 (GU) 2 (GV) 2 (GW) 2 (GX) 2 (GY) 2 (GZ) 2 (HA) 2 (HB) 2 (HC) 2 (HD) 2 (HE) 2 (HF) 2 (HG) 2 (HH) 2 (HI) 2 (HJ) 2 (HK) 2 (HL) 2 (HM) 2 (HN) 2 (HO) 2 (HP) 2 (HQ) 2 (HR) 2 (HS) 2 (HT) 2 (HU) 2 (HV) 2 (HW) 2 (HX) 2 (HY) 2 (HZ) 2 (IA) 2 (IB) 2 (IC) 2 (ID) 2 (IE) 2 (IF) 2 (IG) 2 (IH) 2 (II) 2 (IJ) 2 (IK) 2 (IL) 2 (IM) 2 (IN) 2 (IO) 2 (IP) 2 (IQ) 2 (IR) 2 (IS) 2 (IT) 2 (IU) 2 (IV) 2 (IW) 2 (IX) 2 (IY) 2 (IZ) 2 (JA) 2 (JB) 2 (JC) 2 (JD) 2 (JE) 2 (JF) 2 (JG) 2 (JH) 2 (JI) 2 (JJ) 2 (JK) 2 (JL) 2 (JM) 2 (JN) 2 (JO) 2 (JP) 2 (JQ) 2 (JR) 2 (JS) 2 (JT) 2 (JU) 2 (JV) 2 (JW) 2 (JX) 2 (JY) 2 (JZ) 2 (KA) 2 (KB) 2 (KC) 2 (KD) 2 (KE) 2 (KF) 2 (KG) 2 (KH) 2 (KI) 2 (KJ) 2 (KK) 2 (KL) 2 (KM) 2 (KN) 2 (KO) 2 (KP) 2 (KQ) 2 (KR) 2 (KS) 2 (KT) 2 (KU) 2 (KV) 2 (KW) 2 (KX) 2 (KY) 2 (KZ) 2 (LA) 2 (LB) 2 (LC) 2 (LD) 2 (LE) 2 (LF) 2 (LG) 2 (LH) 2 (LI) 2 (LJ) 2 (LK) 2 (LL) 2 (LM) 2 (LN) 2 (LO) 2 (LP) 2 (LQ) 2 (LR) 2 (LS) 2 (LT) 2 (LU) 2 (LV) 2 (LW) 2 (LX) 2 (LY) 2 (LZ) 2 (MA) 2 (MB) 2 (MC) 2 (MD) 2 (ME) 2 (MF) 2 (MG) 2 (MH) 2 (MI) 2 (MJ) 2 (MK) 2 (ML) 2 (MN) 2 (MO) 2 (MP) 2 (MQ) 2 (MR) 2 (MS) 2 (MT) 2 (MU) 2 (MV) 2 (MW) 2 (MX) 2 (MY) 2 (MZ) 2 (NA) 2 (NB) 2 (NC) 2 (ND) 2 (NE) 2 (NF) 2 (NG) 2 (NH) 2 (NI) 2 (NJ) 2 (NK) 2 (NL) 2 (NM) 2 (NO) 2 (NP) 2 (NQ) 2 (NR) 2 (NS) 2 (NT) 2 (NU) 2 (NV) 2 (NW) 2 (NX) 2 (NY) 2 (NZ) 2 (OA) 2 (OB) 2 (OC) 2 (OD) 2 (OE) 2 (OF) 2 (OG) 2 (OH) 2 (OI) 2 (OJ) 2 (OK) 2 (OL) 2 (OM) 2 (ON) 2 (OO) 2 (OP) 2 (OQ) 2 (OR) 2 (OS) 2 (OT) 2 (OU) 2 (OV) 2 (OW) 2 (OX) 2 (OY) 2 (OZ) 2 (PA) 2 (PB) 2 (PC) 2 (PD) 2 (PE) 2 (PF) 2 (PG) 2 (PH) 2 (PI) 2 (PJ) 2 (PK) 2 (PL) 2 (PM) 2 (PN) 2 (PO) 2 (PP) 2 (PQ) 2 (PR) 2 (PS) 2 (PT) 2 (PU) 2 (PV) 2 (PW) 2 (PX) 2 (PY) 2 (PZ) 2 (QA) 2 (QB) 2 (QC) 2 (QD) 2 (QE) 2 (QF) 2 (QG) 2 (QH) 2 (QI) 2 (QJ) 2 (QK) 2 (QL) 2 (QM) 2 (QN) 2 (QO) 2 (QP) 2 (QQ) 2 (QR) 2 (QS) 2 (QT) 2 (QU) 2 (QV) 2 (QW) 2 (QX) 2 (QY) 2 (QZ) 2 (RA) 2 (RB) 2 (RC) 2 (RD) 2 (RE) 2 (RF) 2 (RG) 2 (RH) 2 (RI) 2 (RJ) 2 (RK) 2 (RL) 2 (RM) 2 (RN) 2 (RO) 2 (RP) 2 (RQ) 2 (RR) 2 (RS) 2 (RT) 2 (RU) 2 (RV) 2 (RW) 2 (RX) 2 (RY) 2 (RZ) 2 (SA) 2 (SB) 2 (SC) 2 (SD) 2 (SE) 2 (SF) 2 (SG) 2 (SH) 2 (SI) 2 (SJ) 2 (SK) 2 (SL) 2 (SM) 2 (SN) 2 (SO) 2 (SP) 2 (SQ) 2 (SR) 2 (SS) 2 (ST) 2 (SU) 2 (SV) 2 (SW) 2 (SX) 2 (SY) 2 (SZ) 2 (TA) 2 (TB) 2 (TC) 2 (TD) 2 (TE) 2 (TF) 2 (TG) 2 (TH) 2 (TI) 2 (TJ) 2 (TK) 2 (TL) 2 (TM) 2 (TN) 2 (TO) 2 (TP) 2 (TQ) 2 (TR) 2 (TS) 2 (TT) 2 (TU) 2 (TV) 2 (TW) 2 (TX) 2 (TY) 2 (TZ) 2 (UA) 2 (UB) 2 (UC) 2 (UD) 2 (UE) 2 (UF) 2 (UG) 2 (UH) 2 (UI) 2 (UJ) 2 (UK) 2 (UL) 2 (UM) 2 (UN) 2 (UO) 2 (UP) 2 (UQ) 2 (UR) 2 (US) 2 (UT) 2 (UU) 2 (UV) 2 (UW) 2 (UX) 2 (UY) 2 (UZ) 2 (VA) 2 (VB) 2 (VC) 2 (VD) 2 (VE) 2 (VF) 2 (VG) 2 (VH) 2 (VI) 2 (VJ) 2 (VK) 2 (VL) 2 (VM) 2 (VN) 2 (VO) 2 (VP) 2 (VQ) 2 (VR) 2 (VS) 2 (VT) 2 (VU) 2 (VV) 2 (VW) 2 (VX) 2 (VY) 2 (VZ) 2 (WA) 2 (WB) 2 (WC) 2 (WD) 2 (WE) 2 (WF) 2 (WG) 2 (WH) 2 (WI) 2 (WJ) 2 (WK) 2 (WL) 2 (WM) 2 (WN) 2 (WO) 2 (WP) 2 (WQ) 2 (WR) 2 (WS) 2 (WT) 2 (WU) 2 (WV) 2 (WW) 2 (WX) 2 (WY) 2 (WZ) 2 (XA) 2 (XB) 2 (XC) 2 (XD) 2 (XE) 2 (XF) 2 (XG) 2 (XH) 2 (XI) 2 (XJ) 2 (XK) 2 (XL) 2 (XM) 2 (XN) 2 (XO) 2 (XP) 2 (XQ) 2 (XR) 2 (XS) 2 (XT) 2 (XU) 2 (XV) 2 (XW) 2 (XZ) 2 (YA) 2 (YB) 2 (YC) 2 (YD) 2 (YE) 2 (YF) 2 (YG) 2 (YH) 2 (YI) 2 (YJ) 2 (YK) 2 (YL) 2 (YM) 2 (YN) 2 (YO) 2 (YP) 2 (YQ) 2 (YR) 2 (YS) 2 (YT) 2 (YU) 2 (YV) 2 (YW) 2 (YZ) 2 (ZA) 2 (ZB) 2 (ZC) 2 (ZD) 2 (ZE) 2 (ZF) 2 (ZG) 2 (ZH) 2 (ZI) 2 (ZJ) 2 (ZK) 2 (ZL) 2 (ZM) 2 (ZN) 2 (ZO) 2 (ZP) 2 (ZQ) 2 (ZR) 2 (ZS) 2 (ZT) 2 (ZU) 2 (ZV) 2 (ZW) 2 (ZX) 2 (ZY) 2 (ZZ)

INTERIOR FINISHES: ENCL. 0505.05 & 0505.05 TO BE CLASS B - FLAME SPREAD 26-75 SMOKE DEV 0-450 ROOFS & ENCLOSED SPACES TO BE SMOKE DEV 0-450 CLASS C - FLAME SPREAD 10-200 SMOKE DEV 0-450 (SEE SHEET A.0.02 FOR AREA & OCCUPANCY CALCULATIONS. SEE SHEET A.0.03 FOR AREA & OCCUPANCY CALCULATIONS. SEE SHEET A.0.04 FOR AREA & OCCUPANCY CALCULATIONS. SEE SHEET A.0.05 FOR AREA & OCCUPANCY CALCULATIONS.

CLUBHOUSE RENOVATION

# REGENCY

AT DOMINION VALLEY, HAYMARKET, VA

COVER SHEET INDEX, GENERAL NOTES CODE INFO	NO.	DATE	DRAWING RELEASE
	1	11-11-13	BID SET
JOB NUMBER 1216 FILE NO. 1216-001	NO.	DATE	REVISION
	1	1-7-14	PERMIT & MISC. REVISIONS

ATWOOD HENNINGSEN KESTNER  
 ARCHITECTS  
 INC.  
 1108 EAST HIGH STREET  
 CHARLOTTESVILLE, VA 22902  
 PHONE (434) 971-7202 FAX (434) 295-2413

A.0.01

SEAL