



PROFFIT & ASSOCIATES
 ENGINEERS & ARCHITECTS
 100 NORTH MARKET STREET
 FREDERICK, MARYLAND 21701
 (301) 882-8332
 FAX (301) 882-8182
 info@profitassociates.com

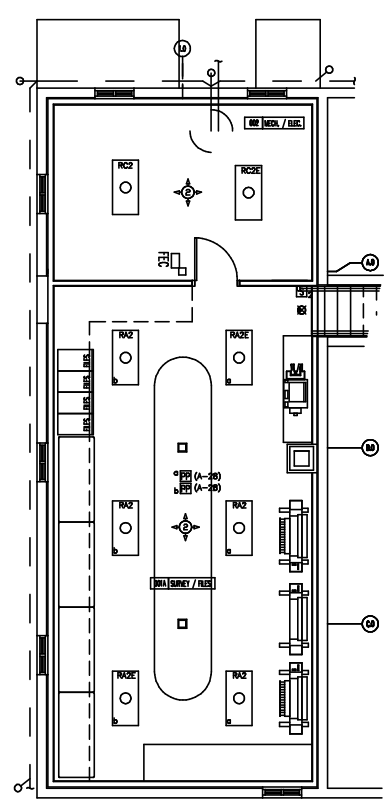
3 West Second Street
 Frederick, MD 21701
 OFFICE (301) 889-4454
 FAX (301) 283-6338
 E-mail: briens@wriemp.com

Professional Certification: I hereby certify that these documents were prepared or approved by me, and that I am a duly licensed professional engineer under the laws of the State of Maryland. License No. 20044. Expiration Date: 06/28/2014.

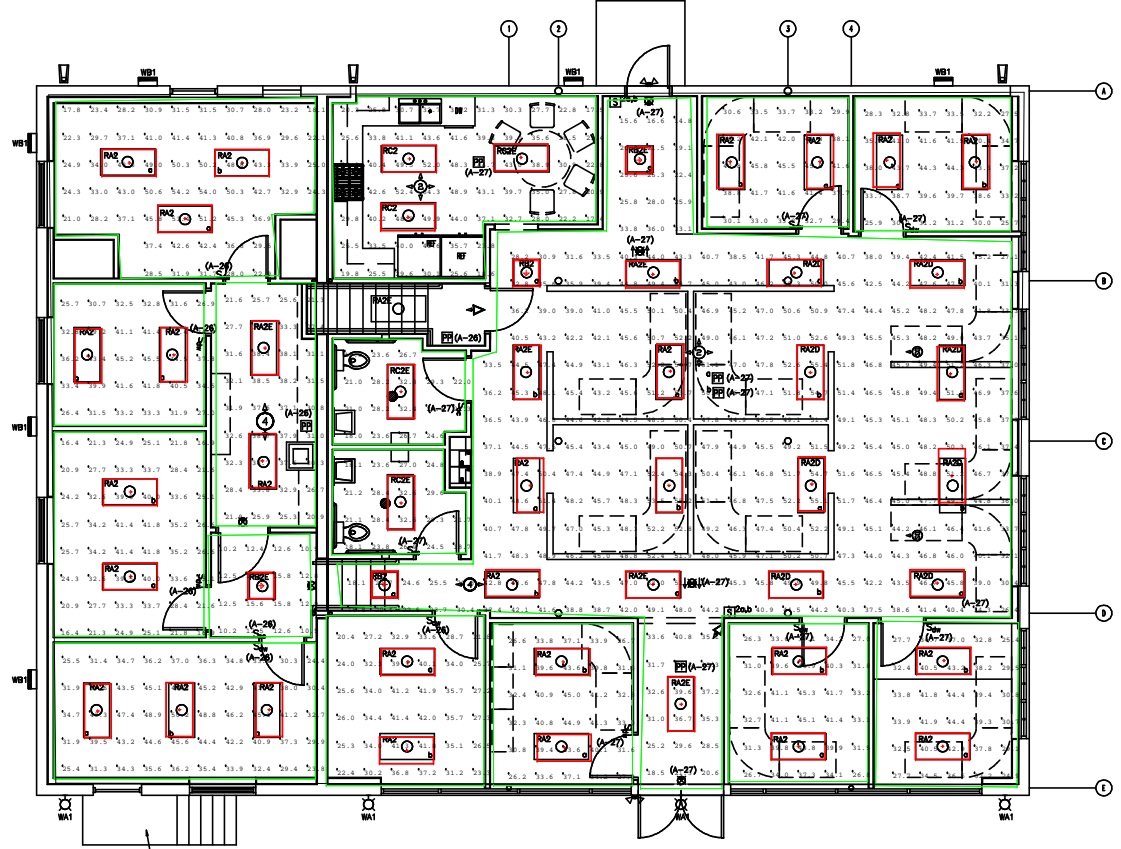
RENOVATIONS TO
 10 SOUTH BENITZ STREET
 FOR CAS ENGINEERING
 10 SOUTH BENITZ STREET
 FREDERICK, MD. 21701

BY	ISSUE
	ISSUE
	REVISION

PROJECT NO: 11191
 DATE: 11-07-13
 BASEMENT & FIRST FLOOR PLAN
 - LIGHTING



SCALE: 1/4"=1'-0"



LPDArea
 Area = 3616 Sq.ft
 Total Watts = 2775
 Lighting Power Density = 0.767 Watts/Sq.ft

SCALE: 1/4"=1'-0"

Symbol	Qty	Label	Arrangement	Total Lamp Lumens	LLF	Description
	45	2 by 4 Two Lamp T8	SINGLE	5800	0.850	Pinnacle CAT# LU24W-2T8
	4	2 BY 2 TWO LAMP T8	SINGLE	2700	0.850	LU22W-2T8

Label	CalcType	Units	Avg	Max	Min	Avg/Min	Max/Min
Room_1_Workplane	Illuminance	Fc	28.83	41.8	16.4	1.76	2.55
Room_10_Workplane	Illuminance	Fc	35.71	44.3	25.7	1.39	1.72
Room_11_Workplane	Illuminance	Fc	37.80	45.8	29.4	1.29	1.56
Room_12_Workplane	Illuminance	Fc	25.02	32.6	18.1	1.38	1.80
Room_13_Workplane	Illuminance	Fc	25.13	32.4	17.9	1.40	1.81
Room_14_Workplane	Illuminance	Fc	35.63	54.2	17.8	2.00	3.04
Room_15_Workplane	Illuminance	Fc	34.13	54.3	17.4	1.96	3.12
Room_2_Workplane	Illuminance	Fc	35.90	45.5	25.7	1.40	1.77
Room_3_Workplane	Illuminance	Fc	32.15	42.0	20.4	1.58	2.06
Room_4_Workplane	Illuminance	Fc	12.81	15.8	10.2	1.26	1.55
Room_5_Workplane	Illuminance	Fc	31.33	38.7	20.9	1.50	1.85
Room_6_Workplane	Illuminance	Fc	35.72	45.0	26.2	1.36	1.72
Room_7_Workplane	Illuminance	Fc	35.91	45.3	26.3	1.37	1.72
Room_8_Workplane	Illuminance	Fc	35.35	44.4	24.9	1.42	1.78
Room_9_Workplane	Illuminance	Fc	42.89	55.4	14.8	2.90	3.74
Room_Workplane	Illuminance	Fc	37.69	50.2	23.8	1.58	2.11

