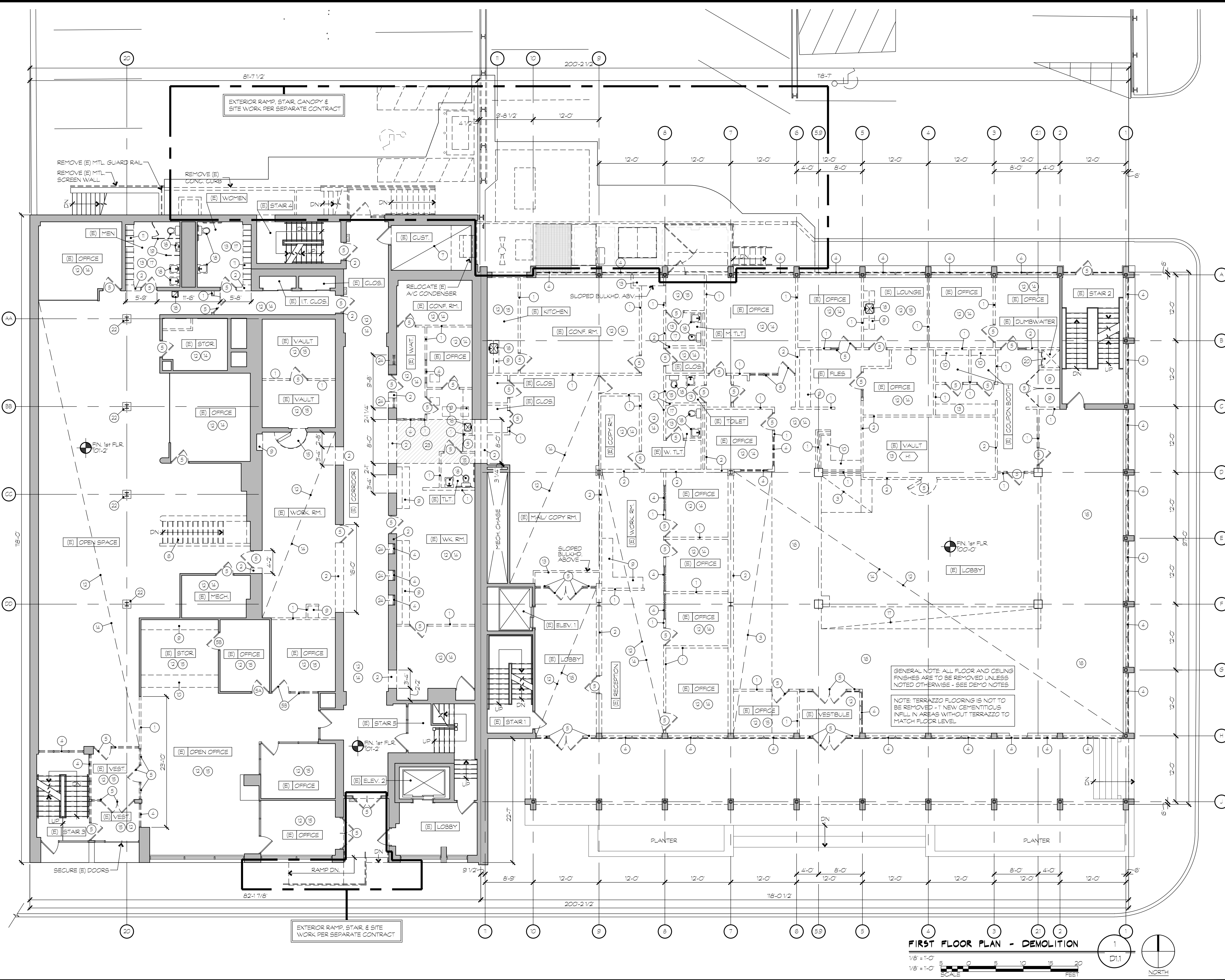


DEMOLITION NOTES

- 1 REMOVE (E) STUD WALLS/DEMOUNTABLE PARTITION. PATCH & REPAIR ADJACENT WALLS & FLOOR AS REQUIRED.
- 2 SAWCUT & REMOVE (E) MASONRY WALL - PATCH & REPAIR ADJACENT WALLS & FLOOR AS REQUIRED. REMOVE TO MIN. 1 CMU COURSE BELOW FINISH SLAB.
- 3 REMOVE (E) PLYWD/ CEMENTITIOUS BD. FLOOR BUILD-UP DOWN TO CONC. SLAB. REFER TO STRUCTURAL DRAWINGS.
- 4 REMOVE (E) WINDOW FRAME, SILL, GLAZING, AND ASSOCIATED HARDWARE - PATCH & REPAIR ADJACENT WALLS AS REQUIRED.
- 5 REMOVE (E) DOOR & FRAME AS SHOWN - PATCH & REPAIR ADJACENT WALLS & FLOOR AS REQUIRED.
- 6A REMOVE (E) DOOR, (E) FRAME TO REMAIN
- 6B REMOVE (E) DOOR, RELOCATE (E) FRAME
- 6 REMOVE (E) STL/CONC. OR WOOD STAIRS, HANDRAILS, SUPPORTS, & ANY SURROUNDING HALF WALLS - PATCH & REPAIR ADJACENT WALLS & INFILL FLOOR AS REQUIRED.
- 7 REMOVE (E) ROTTED WOOD FLOORING & ANY DAMAGED FLOOR FRAMING - PATCH & REPAIR ADJACENT WALLS AS REQUIRED.
- 8 SAWCUT & REMOVE (E) CONC STAIR/ RAMP & SIDEWALK - PATCH & REPAIR ADJACENT SURFACES AS REQUIRED. REFER TO CIVIL DRAWINGS FOR ADDITIONAL SITE WORK.
- 9 REMOVE (E) SHELVING/ CABEWK & APPLIANCES - PATCH & REPAIR ADJACENT FINISHES AS REQUIRED.
- 10 REMOVE (E) DESK/COUNTERTOP & ASSOCIATED HARDWARE PATCH & REPAIR ADJACENT FINISHES AS REQUIRED.
- 11 REMOVE (E) LOCKERS AS SHOWN. PATCH & REPAIR ADJACENT FINISHES AS REQUIRED.
- 12 REMOVE (E) SUSPENDED ACOUSTICAL TILE CEILING & GRID - PATCH & REPAIR ADJACENT WALLS AS REQUIRED.
- 13 REMOVE (E) GYP BD CEILING. PATCH & REPAIR ADJACENT SURFACES AS REQUIRED.
- 14 REMOVE (E) CARPET & BASE - PREPARE CONC. SLAB FOR NEW FLOOR FINISH.
- 15 REMOVE (E) VCT FLOORING & BASE - PREPARE CONC. SLAB FOR NEW FLOOR FINISH.
- 16 SCRAPE, CLEAN, & PREPARE (E) TERRAZZO FLOORING TO RECEIVE NEW FLOOR FINISH.
- 17 REMOVE (E) MUD SET CERAMIC TILE AND SETTING BED AS SHOWN. PREPARE CONC. SLAB FOR NEW FLOOR FINISH.
- 18 REMOVE (E) PLUMBING FIXTURE- REFER TO PLUMBING DRAWINGS. PATCH & REPAIR ADJACENT FINISHES AS REQUIRED.
- 19 REMOVE (E) TOILET PARTITIONS, PARTITION DOORS AND/ OR ACCESSORIES. PATCH & REPAIR ADJACENT WALLS AND FLOOR AS REQUIRED.
- 20 REMOVE (E) DUMBWATER CAB & ACCESSORIES. PATCH & REPAIR ADJACENT FINISHES AS REQUIRED.
- 21 REMOVE PORTION OF (E) PARKING DIVIDER AS SHOWN
- 22 REMOVE (E) MTL FURRING/ GYP. BD. ENCLOSURE AROUND COLUMN
- 23 REMOVE (E) FLOOR FRAMING AS REQUIRED FOR NEW RAMP INSTALLATION (SEE NEW WORK)
- 24 REMOVE (E) PLANTERS, PATCH & REPAIR ADJACENT FINISHES AS REQUIRED

HAZMAT NOTES

- HT REMOVE (E) HAZMAT FLOOR MATERIAL. REFER TO HAZMAT SPECIFICATIONS.

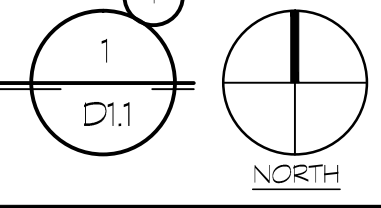


GENERAL NOTE: ALL FLOOR AND CEILING FINISHES ARE TO BE REMOVED UNLESS NOTED OTHERWISE - SEE DEMO NOTES

NOTE: TERRAZZO FLOORING IS NOT TO BE REMOVED - 1" NEW CEMENTITIOUS INFILL IN AREAS WITH-OUT TERRAZZO TO MATCH FLOOR LEVEL.

FIRST FLOOR PLAN - DEMOLITION

1/8" = 1'-0"
1/8" = 1'-0"
SCALE



DRAWING INVENTOR: [Name]
DESIGNER: [Name]
CHECKED BY: [Name]
DATE: [Date]

CONTRACTOR: [Name]
LICENSE NO.: [Number]
EXPIRATION DATE: [Date]

[Blank space for notes or stamps]

BUSHEY FEIGHT MORIN ARCHITECTS INC.
475 North Prairie Street, Hagerstown, MD 21740
301-733-5600 Fax 301-733-5612
E-mail: BFM@BFM-Architects.com
© copyright 2014 - Bushey Feight Morin Architects, Inc.

BFM
BUSHEY FEIGHT MORIN ARCHITECTS INC.
WASH. CO. ADMINISTRATION COMPLEX
FIRST FLOOR RENOVATIONS

BID DOCUMENTS
FIRST FLOOR PLAN - DEMO
D1.1
OF SHEETS
DATE: 08.15.14