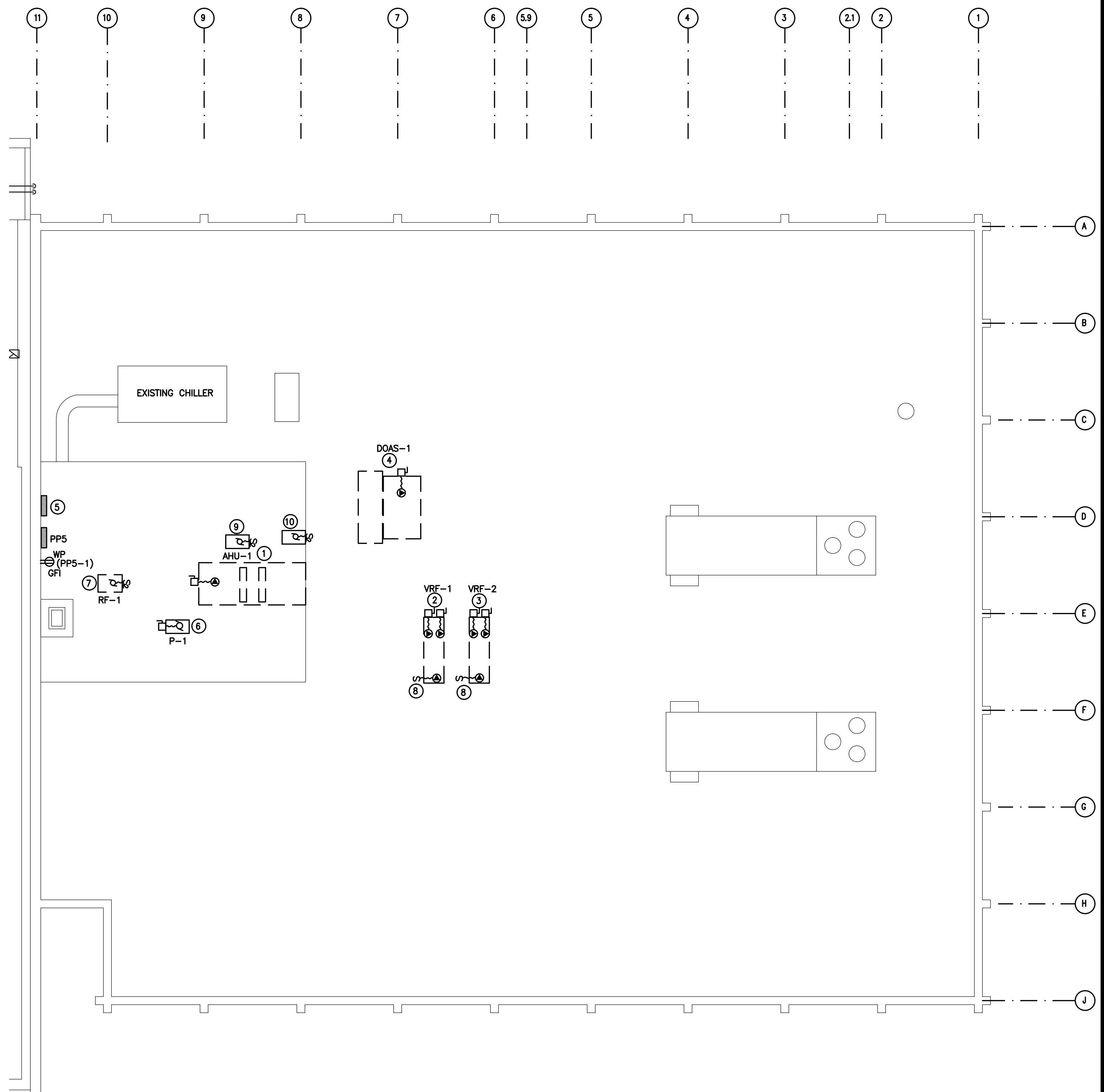


EQUIPMENT SCHEDULE - ELECTRICAL (SHEET E1.3 ONLY)										
NO.	ITEM	QTY.	VOLTS	PHASE	AMPS	CIRCUIT	CABLE/CONDUIT	DISCONNECT/RECEPTACLE	FUSE	REMARKS
1	AHU-2	1	208	1	0.35	PP4-27,29	(2)#12,(1)#12 GRD-3/4"	20A MOTOR SNAP SWITCH	N/A	.
2	AHU-3	1	208	1	0.35	PP4-27,29	(2)#12,(1)#12 GRD-3/4"	20A MOTOR SNAP SWITCH	N/A	.
3	EF-3	1	120	1	2.6	PP4-31	(2)#12,(1)#12 GRD-3/4"	20A MOTOR SNAP SWITCH	N/A	.
4	EF-4	1	120	1	2.6	PP4-31	(2)#12,(1)#12 GRD-3/4"	20A MOTOR SNAP SWITCH	N/A	.
5	AHU-4	1	208	1	0.35	PP4-27,29	(2)#12,(1)#12 GRD-3/4"	20A MOTOR SNAP SWITCH	N/A	.
6	BCC	1	208	1	1.63	PP4-27,29	(2)#12,(1)#12 GRD-3/4"	20A MOTOR SNAP SWITCH	N/A	.
7	AHU-9	1	208	1	0.35	PP4-28,30	(2)#12,(1)#12 GRD-3/4"	20A MOTOR SNAP SWITCH	N/A	.
8	AHU-7A	1	208	1	0.35	PP4-27,29	(2)#12,(1)#12 GRD-3/4"	20A MOTOR SNAP SWITCH	N/A	.
9	AHU-6	1	208	1	0.35	PP4-27,29	(2)#12,(1)#12 GRD-3/4"	20A MOTOR SNAP SWITCH	N/A	.
10	AHU-7B	1	208	1	0.35	PP4-27,29	(2)#12,(1)#12 GRD-3/4"	20A MOTOR SNAP SWITCH	N/A	.
11	AHU-11	1	208	1	0.35	PP4-28,30	(2)#12,(1)#12 GRD-3/4"	20A MOTOR SNAP SWITCH	N/A	.
12	AHU-10	1	208	1	0.35	PP4-28,30	(2)#12,(1)#12 GRD-3/4"	20A MOTOR SNAP SWITCH	N/A	.
13	AHU-12A	1	208	1	0.35	PP4-28,30	(2)#12,(1)#12 GRD-3/4"	20A MOTOR SNAP SWITCH	N/A	.
14	AHU-12B	1	208	1	0.35	PP4-28,30	(2)#12,(1)#12 GRD-3/4"	20A MOTOR SNAP SWITCH	N/A	.
15	AHU-13	1	208	1	0.35	PP4-28,30	(2)#12,(1)#12 GRD-3/4"	20A MOTOR SNAP SWITCH	N/A	.
16	AHU-15	1	208	1	0.35	PP4-28,30	(2)#12,(1)#12 GRD-3/4"	20A MOTOR SNAP SWITCH	N/A	.
17	AHU-14	1	208	1	0.35	PP4-28,30	(2)#12,(1)#12 GRD-3/4"	20A MOTOR SNAP SWITCH	N/A	.
18	AHU-16	1	208	1	0.35	PP4-28,30	(2)#12,(1)#12 GRD-3/4"	20A MOTOR SNAP SWITCH	N/A	.
19	AHU-8	1	208	1	0.35	PP4-28,30	(2)#12,(1)#12 GRD-3/4"	20A MOTOR SNAP SWITCH	N/A	.
20	BCC-1B	1	120	1	.	PP4-27,29	(2)#12,(1)#12 GRD-3/4"	20A MOTOR SNAP SWITCH	N/A	.
21	AHU-17	1	208	1	0.35	PP3-8,10	(2)#12,(1)#12 GRD-3/4"	20A MOTOR SNAP SWITCH	N/A	.
22	AHU-33D	1	120	1	0.35	PP1-36,38	(2)#12,(1)#12 GRD-3/4"	20A MOTOR SNAP SWITCH	N/A	.
23	P-2	1	208	1	1	PP3-4	(2)#12,(1)#12 GRD-3/4"	20A MOTOR SNAP SWITCH	N/A	.
24	WH-2	1	208	1	27	PP3-3,5	(2)#8,(1)#10 GRD-3/4"	HEAVY DUTY, 240V, 60A, 2 POLE, NEMA 1, NONFUSED	N/A	.
25	BCC	1	208	1	1.63	PP1-36,38	(2)#12,(1)#12 GRD-3/4"	20A MOTOR SNAP SWITCH	N/A	.
26	AHU-19A	1	208	1	0.35	PP1-36,38	(2)#12,(1)#12 GRD-3/4"	20A MOTOR SNAP SWITCH	N/A	.
27	AHU-19B	1	208	1	0.35	PP1-36,38	(2)#12,(1)#12 GRD-3/4"	20A MOTOR SNAP SWITCH	N/A	.
28	AHU-20	1	208	1	0.35	PP1-36,38	(2)#12,(1)#12 GRD-3/4"	20A MOTOR SNAP SWITCH	N/A	.
29	AHU-35	1	208	1	0.35	PP1-36,38	(2)#12,(1)#12 GRD-3/4"	20A MOTOR SNAP SWITCH	N/A	.
30	AHU-36	1	208	1	0.35	PP1-36,38	(2)#12,(1)#12 GRD-3/4"	20A MOTOR SNAP SWITCH	N/A	.
31	AHU-21	1	208	1	0.35	PP1-36,38	(2)#12,(1)#12 GRD-3/4"	20A MOTOR SNAP SWITCH	N/A	.
32	AHU-22	1	208	1	0.35	PP1-36,38	(2)#12,(1)#12 GRD-3/4"	20A MOTOR SNAP SWITCH	N/A	.
33	NOT USED	.	.	.	.	.	.	.	.	.
34	AHU-23	1	208	1	0.35	PP1-35,37	(2)#12,(1)#12 GRD-3/4"	20A MOTOR SNAP SWITCH	N/A	.
35	AHU-18	1	208	1	0.35	PP1-35,37	(2)#12,(1)#12 GRD-3/4"	20A MOTOR SNAP SWITCH	N/A	.
36	AHU-24	1	208	1	0.35	PP1-35,37	(2)#12,(1)#12 GRD-3/4"	20A MOTOR SNAP SWITCH	N/A	.
37	AHU-25	1	208	1	0.35	PP1-35,37	(2)#12,(1)#12 GRD-3/4"	20A MOTOR SNAP SWITCH	N/A	.
38	AHU-26	1	208	1	0.35	PP1-35,37	(2)#12,(1)#12 GRD-3/4"	20A MOTOR SNAP SWITCH	N/A	.
39	AHU-27	1	208	1	0.35	PP1-35,37	(2)#12,(1)#12 GRD-3/4"	20A MOTOR SNAP SWITCH	N/A	.
40	AHU-32	1	208	1	0.35	PP1-35,37	(2)#12,(1)#12 GRD-3/4"	20A MOTOR SNAP SWITCH	N/A	.
41	AHU-28	1	208	1	0.35	PP1-35,37	(2)#12,(1)#12 GRD-3/4"	20A MOTOR SNAP SWITCH	N/A	.
42	AHU-29	1	208	1	0.35	PP1-35,37	(2)#12,(1)#12 GRD-3/4"	20A MOTOR SNAP SWITCH	N/A	.
43	AHU-30	1	208	1	0.35	PP1-35,37	(2)#12,(1)#12 GRD-3/4"	20A MOTOR SNAP SWITCH	N/A	.
44	AHU-31	1	208	1	0.35	PP1-35,37	(2)#12,(1)#12 GRD-3/4"	20A MOTOR SNAP SWITCH	N/A	.
45	AHU-33A	1	208	1	0.35	PP1-36,38	(2)#12,(1)#12 GRD-3/4"	20A MOTOR SNAP SWITCH	N/A	.
46	AHU-33B	1	208	1	0.35	PP1-36,38	(2)#12,(1)#12 GRD-3/4"	20A MOTOR SNAP SWITCH	N/A	.
47	AHU-33C	1	208	1	0.35	PP1-36,38	(2)#12,(1)#12 GRD-3/4"	20A MOTOR SNAP SWITCH	N/A	.
48	AHU-34A	1	208	1	0.35	PP1-36,38	(2)#12,(1)#12 GRD-3/4"	20A MOTOR SNAP SWITCH	N/A	.
49	AHU-34B	1	208	1	0.35	PP1-36,38	(2)#12,(1)#12 GRD-3/4"	20A MOTOR SNAP SWITCH	N/A	.
50	AHU-5	1	208	1	0.35	PP4-27,29	(2)#12,(1)#12 GRD-3/4"	20A MOTOR SNAP SWITCH	N/A	.
51	BCC	1	208	1	1.63	PP1-35,37	(2)#12,(1)#12 GRD-3/4"	20A MOTOR SNAP SWITCH	N/A	.
52	NOT USED	.	.	.	.	.	.	.	.	.
53	HEAT TAPE	1	120	1	20	PP2-9	(2)#12,(1)#12 GRD-3/4"	20A MOTOR SNAP SWITCH	N/A	.
54	WH-1	1	208	1	39	PP2-9,11	(2)#8,(1)#10 GRD-3/4"	HEAVY DUTY, 240V, 60A, 2 POLE, NEMA 1, NONFUSED	N/A	.
55	WH-1	1	208	1	39	PP2-8,10	(2)#8,(1)#10 GRD-3/4"	HEAVY DUTY, 240V, 60A, 2 POLE, NEMA 1, NONFUSED	N/A	.
56	P-1	42	120	1	FRAC	*	(2)#12,(1)#12 GRD-3/4"	20A MOTOR SNAP SWITCH	N/A	.

\* = REFER TO PANEL SCHEDULE SHEET E4.2 FOR CIRCUITS

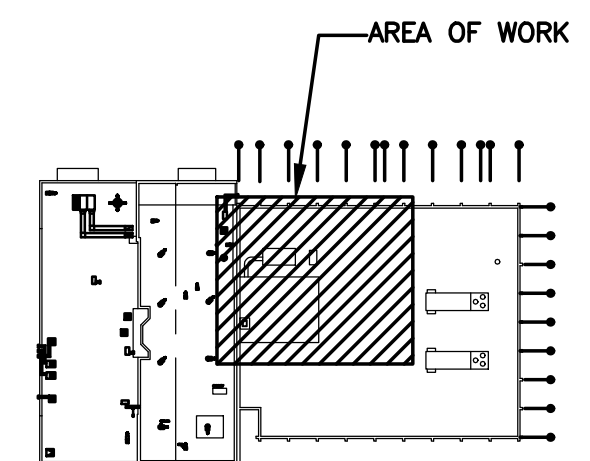


PART ROOF PLAN - POWER - NEW  
SCALE: 1/8" = 1'-0"

EQUIPMENT SCHEDULE - ELECTRICAL (THIS SHEET ONLY) E1.4										
NO.	ITEM	QTY.	VOLTS	PHASE	AMPS	CIRCUIT	CABLE/CONDUIT	DISCONNECT/RECEPTACLE	FUSE	REMARKS
1	AHU-1	1	208	3	42.7	PP5-3,5,7	(3)#6,(1)#10 GRD-1"	HEAVY DUTY, 240V, 60A, 3 POLE, NEMA 3R, FUSED	50A	.
2	VRF-1 - MOD 1	1	208	3	60	PP5-4,6,8	(3)#4,(1)#8 GRD-1 1/4"	HEAVY DUTY, 240V, 100A, 3 POLE, NEMA 3R, FUSED	60A	.
3	VRF-1 - MOD 2	1	208	3	54	PP5-9,11,13	(3)#4,(1)#8 GRD-1 1/4"	HEAVY DUTY, 240V, 100A, 3 POLE, NEMA 3R, FUSED	60A	.
4	VRF-2 - MOD 1	1	208	3	60	PP5-10,12,14	(3)#4,(1)#8 GRD-1 1/4"	HEAVY DUTY, 240V, 100A, 3 POLE, NEMA 3R, FUSED	60A	.
5	VRF-2 - MOD 2	1	208	3	54	PP5-15,17,19	(3)#4,(1)#8 GRD-1 1/4"	HEAVY DUTY, 240V, 100A, 3 POLE, NEMA 3R, FUSED	60A	.
6	DOAS-1	1	208	3	47	PP5-16,18,20	(3)#6,(1)#10 GRD-1"	HEAVY DUTY, 240V, 60A, 3 POLE, NEMA 3R, FUSED	50A	.
7	CONTROL PANEL	1	120	1	5	PP5-2	(2)#12,(1)#12 GRD-3/4"	N/A	N/A	COORDINATE LOCATION WITH HVAC
8	P-1	1	208	1	6.9	PP5-21,23	(2)#12,(1)#12 GRD-3/4"	20A MOTOR SNAP SWITCH	N/A	.
9	RF-1	1	208	3	17	PP5-22,24,26	(2)#10,(1)#10 GRD-3/4"	HEAVY DUTY, 240V, 30A, 3 POLE, NEMA 3R, NONFUSED	N/A	.
10	SNOW SENSOR	2	120	1	5	PP5-25	(2)#12,(1)#12 GRD-3/4"	20A MOTOR SNAP SWITCH	N/A	CONNECTED TO VRF-1, VRF-2
11	P-2	1	120	3	5.8	PP5-28	(2)#12,(1)#12 GRD-3/4"	20A MOTOR SNAP SWITCH	N/A	.
12	P-3	1	120	1	5.8	PP5-28	(2)#12,(1)#12 GRD-3/4"	20A MOTOR SNAP SWITCH	N/A	.

**SHEET NOTES:**

- REFER TO SHEET E4.2 FOR PANEL SCHEDULES



KEY PLAN  
NO SCALE



RHL ENGINEERING COMPANY, INC.

3 West Second Street  
Frederick, Md. 21701  
OFFICE: (301) 695-9424  
FAX: (301) 293-6338  
E-mail: rhlengr@rhlengr.com

Professional Certification. I hereby certify that these documents were prepared or approved by me, and that I am a duly licensed professional engineer under the laws of the State of Maryland. License No. 46511 Expiration Date: 06/03/2018

BUSHEY FEIGHT MORIN ARCHITECTS INC.  
473 North Potomac Street, Hagerstown, Md 21740  
301-733-5600 Fax 301-733-5612  
E-mail: BFM@BFMArchitects.com

copyright 2014, Bushey Feight Morin Architects, Inc.

**BFM**

BUSHEY FEIGHT MORIN ARCHITECTS INC.  
473 North Potomac Street, Hagerstown, Md 21740  
301-733-5600 Fax 301-733-5612  
E-mail: BFM@BFMArchitects.com

BFM No. 14028 WASH. CO. ADMINISTRATION COMPLEX  
RHL No. 13208 FIRST FLOOR RENOVATIONS

BID DOCUMENTS

ROOF PLAN  
POWER - NEW

**E1.4**

7 OF 14 SHEETS

DATE : 08.15.14