

PART ROOF PLAN - MECHANICAL NEW
SCALE: 1/4"=1'-0"

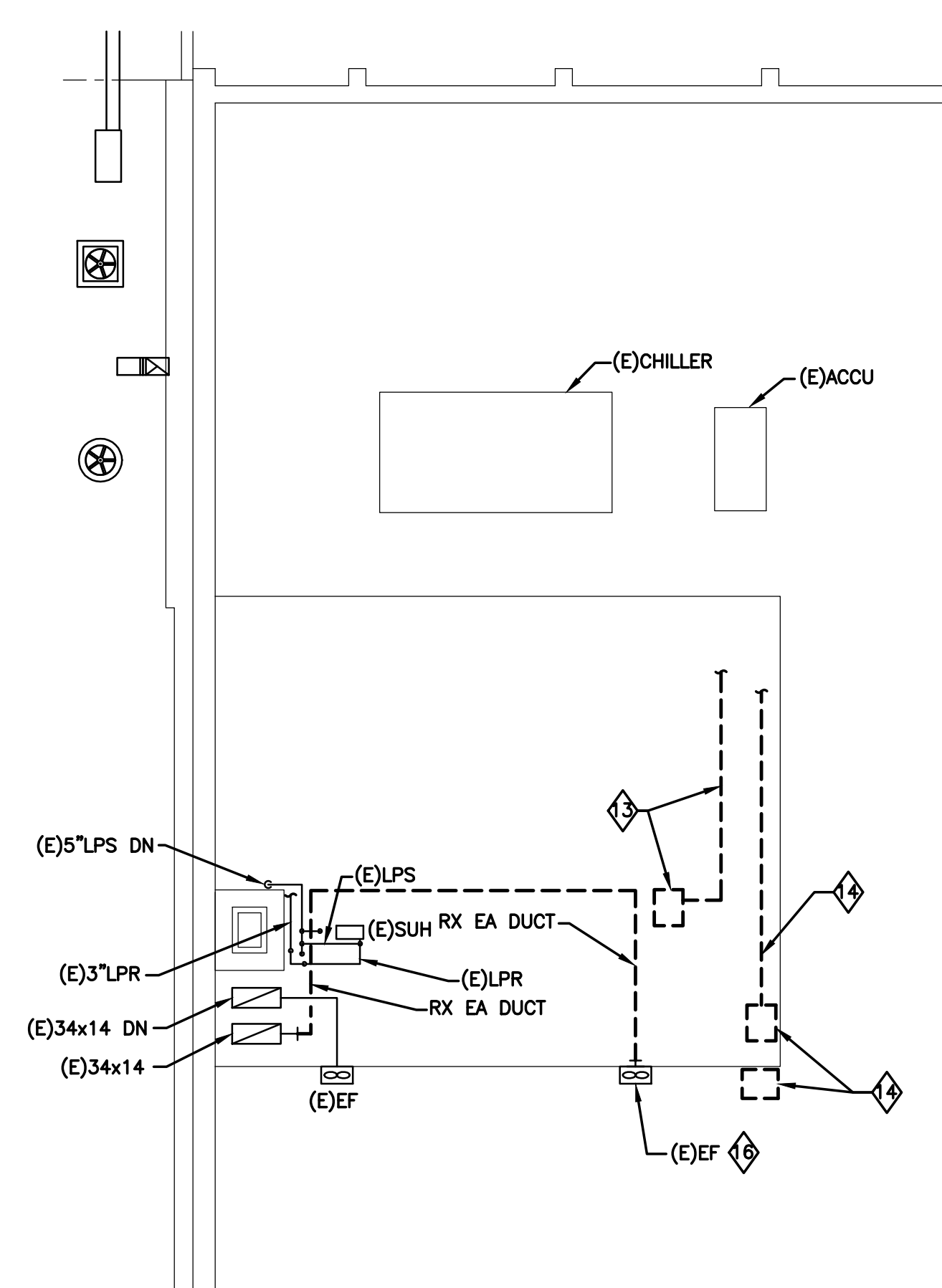
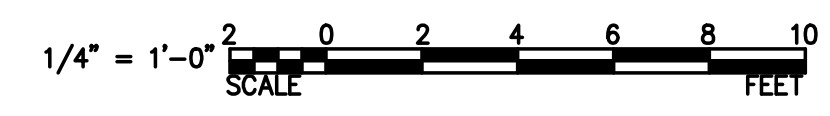
DRAWING NOTES:

- 1. PROVIDE MODULAR AIR HANDLING UNIT. PROVIDE 4" HIGH HOUSEKEEPING PAD UNDER EQUIPMENT. EXTEND THE PAD A MINIMUM OF 4" LARGER THAN THE EQUIPMENT SIZE.
- 2. PROVIDE ENERGY RECOVERY DEDICATED OUTDOOR AIR UNIT ON ROOF CURB. INSTALL PER MANUFACTURER'S REQUIREMENTS.
- 3. PROVIDE VARIABLE REFRIGERANT FLOW HEAT PUMP. PROVIDE EQUIPMENT SUPPORT CURBS. INSTALL PER MANUFACTURER'S REQUIREMENTS.
- 4. PROVIDE STEAM-TO-WATER CONVERTER. PROVIDE 4" HIGH HOUSEKEEPING PAD UNDER EQUIPMENT. INSTALL PER MANUFACTURER'S REQUIREMENTS.
- 5. PROVIDE INLINE RETURN AIR FAN. INSTALL PER MANUFACTURER REQUIREMENTS. FAN SHALL INTEGRATE WITH AIR HANDLING UNIT (AHU-1) CONTROLS.
- 6. EXTEND DUCTWORK DOWN IN CHASE TO FIRST FLOOR IN SPACE PROVIDED BY REMOVED ABANDONED DUCTWORK. PROVIDE FIRE DAMPER AT SHAFT.
- 7. PROVIDE EQUIPMENT ROOF CURB BY UNIT MANUFACTURER.
- 8. PROVIDE EQUIPMENT SUPPORT CURBS.
- 9. PROVIDE 48"x36" OUTDOOR AIR LOUVER.(RUSKIN MODEL: ELF6375DX, OR APPROVED EQUAL) TRANSITION FROM UNIT INTAKE OPENING TO LOUVER SIZE.

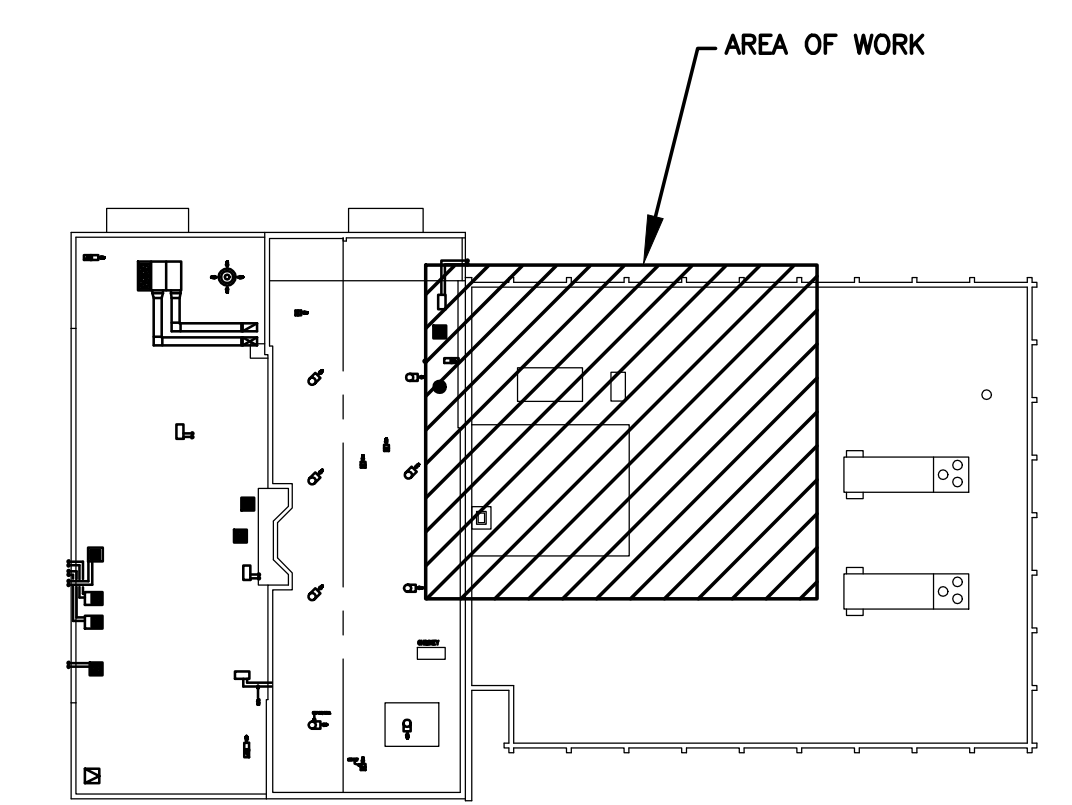
- 10. PROVIDE NON-PENETRATING PIPE SUPPORT. PROVIDE ALL HARDWARE REQUIRED TO SUPPORT PIPING. ERICO CADDY, OR APPROVED EQUAL.
- 11. PROVIDE NON-PENETRATING DUCT ROOF SUPPORT AND ALL REQUIRED HARDWARE TO SUPPORT DUCT. ERICO CADDY, OR APPROVED EQUAL.
- 12. TRANSITION RETURN AIR DUCT DOWN AND CONNECT TO AIR HANDLING UNIT RETURN AIR CONNECTION.(APPROX. 46"x16")
- 13. REMOVE EXISTING ABANDONED ELECTRICAL EQUIPMENT AND ALL ASSOCIATED CABLE TRAYS, WIRING, SWITCHES, PANELS AND SUPPORTS.
- 14. REMOVE EXISTING ABANDONED VERTICAL AIR HANDLING UNIT AND ALL ASSOCIATED DUCTWORK, PIPING, INSULATION, CONTROL WIRING, POWER WIRING, AND SUPPORTS. REMOVE ASSOCIATED OUTDOOR UNIT.
- 15. PROVIDE NEW EXHAUST AIR DUCTWORK, AND CONNECT TO EXISTING MAIN DUCT DOWN CHASE, AND TO EXISTING EXHAUST FAN. RE-BALANCE FAN TO MATCH PRE-SURVEY AIR VOLUME TEST DATA.
- 16. PROVIDE PRE-DEMOLITION TESTING OF EXISTING EXHAUST AIR FAN.
- 17. EXTEND RELIEF AIR DUCT UP THROUGH ROOF AND TERMINATE WITH GOOSENECK.
- 18. EXTEND DOMESTIC COLD WATER FROM EXISTING 2" RISER TO MAKE-UP WATER CONNECTION.
- 19. PROVIDE AUTOMATIC CONTROL PANEL.

GENERAL NOTES:

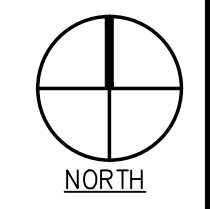
- G1. HEAT TRACE ALL PIPING EXPOSED OUTSIDE OF PENTHOUSE. HEAT TRACING SHALL BE PROVIDED UNDER ELECTRICAL DIVISION.
- G2. ALL REFRIGERANT PIPING SHALL BE SIZED PER MANUFACTURER'S REQUIREMENTS.
- G3. REFER TO SCHEDULES, DETAILS, AND AUTOMATIC TEMPERATURE CONTROL DRAWINGS FOR ADDITIONAL REQUIREMENTS.
- G4. PROVIDE ALL EQUIPMENT CLEARANCES PER MANUFACTURER'S REQUIREMENTS.
- G5. INSTALL ALL PIPING AND DUCTWORK AS HIGH AS POSSIBLE.



PART ROOF PLAN - MECHANICAL DEMO
SCALE: 1/8"=1'-0"



KEY PLAN
NO SCALE



RHL ENGINEERING COMPANY, INC.
3 West Second Street
Frederick, Md. 21701
OFFICE: (301) 695-9424
FAX: (301) 293-6338
E-mail: rhlengr@rhlengr.com

Professional Certification. I hereby certify that these documents were prepared or approved by me, and that I am a duly licensed professional engineer under the laws of the State of Maryland. License No: 65511 Expiration Date: 06/03/2018

BUSHEY FEIGHT MORIN ARCHITECTS INC.
473 North Potomac Street, Hagerstown, Md 21740
301-733-5600 Fax 301-733-5612
E-mail: BFM@BFMArchitects.com

BFM
copyright 2014, Bushey Feight Morin Architects, Inc.
BFW No. 14028 WASH. CO. ADMINISTRATION COMPLEX
RHL No. 13208 FIRST FLOOR RENOVATIONS

BID DOCUMENTS
PART ROOF PLAN MECHANICAL- DEMO & NEW
M1.3
5 OF 12 SHEETS
DATE : 08.15.14