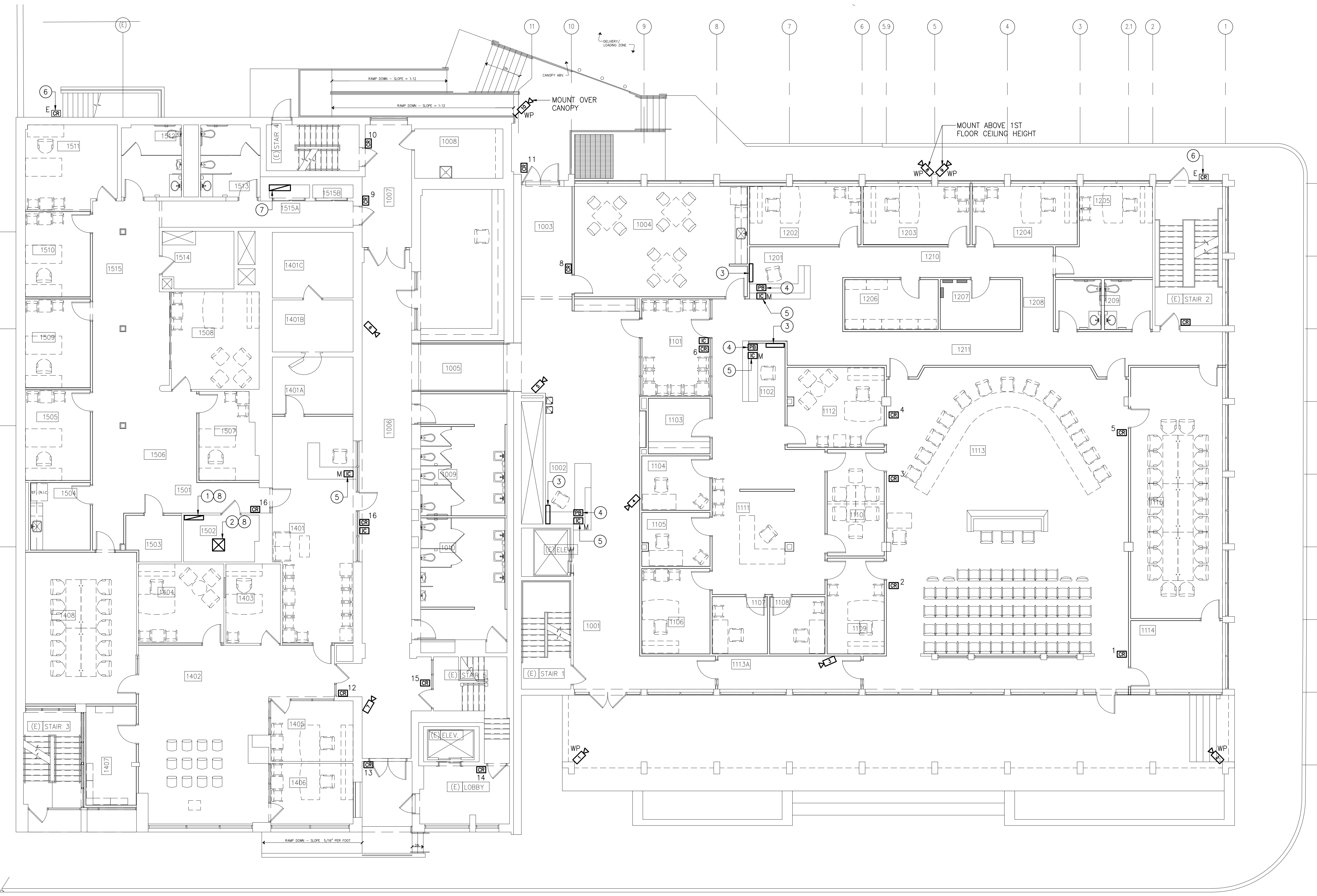
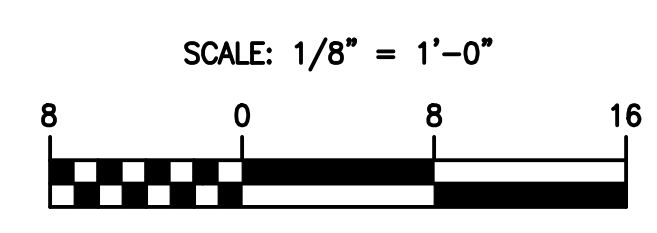


1001	LOBBY
1002	SECURITY POST
1003	LOBBY
1004	LUNCH ROOM
1005	RAMP
1006	CORRIDOR
1007	HALL
1008	STORAGE
1009	WOMEN
1010	MEN
1011	CUSTODIAL
1101	LOBBY
1102	RECEPTION
1103	COPIER RM.
1104	COM. OFFC.
1105	COM. OFFC.
1106	PRES. OFFC.
1107	COMMIS.
1108	COMMIS.
1109	ASST. ADMIN.
1110	CONF. RM.
1111	CNTY. CLERK
1112	CNTY. ADMIN.
1113	COMM. MTG RM.
1113A	HALL
1114	VIDEO / MEDIA RM.
1115	CONF. ROOM & LIBRARY
1201	RECPT.
1202	LEGAL ASST.
1203	ASST. ATTY
1204	DPTY. ATTY
1205	CNTY. ATTY
1206	FILE RM.
1207	STORAGE
1208	MEN
1209	WOMEN
1210	HALL
1211	HALL
1301	MAIL ROOM
1401	EDC LOBBY
1401A	STORAGE
1401B	STORAGE
1401C	STORAGE
1402	OPEN OFFICE
1403	OFFICE
1404	OFFICE
1405	OFFICE
1406	OFFICE
1407	STOR.
1408	CONF. RM.
1501	HALL
1502	MECH.
1503	STORAGE
1504	KITCHENETTE
1505	OFFICE
1506	OFFICE
1507	OFFICE
1508	OFFICE
1509	OFFICE
1510	OFFICE
1511	OFFICE
1512	MEN
1513	WOMEN
1514	STORAGE
1515	HALL
1515A	L.T. CLOS.
1515B	CLOS.



- DRAWING NOTES:**
- 1 PROVIDE NEW ACCESS CONTROL PANELS.
 - 2 PROVIDE NEW CCTV RACK AND EQUIPMENT.
 - 3 PROVIDE NEW SECURITY CAMERA, MONITOR, MOUNT AND CABLING.
 - 4 PROVIDE PANIC ALARM STATION.
 - 5 PROVIDE VIDEO INTERCOM MASTER STATION.
 - 6 RE-USE EXISTING CARD READER. PROVIDE NEW CABLING FROM EXISTING READER TO NEW ACCESS CONTROL PANEL.
 - 7 REMOVE EXISTING ACCESS CONTROL PANEL. EXTEND EXISTING DOOR CONTROL CABLES TO NEW ACCESS CONTROL PANEL IN ROOM 1502.
 - 8 INTERFACE VIDEO DOOR ENTRY SYSTEM WITH ACCESS CONTROL SYSTEM.

FIRST FLOOR PLAN - SECURITY
SCALE: 1/8" = 1'-0"



Wright Engineering, LLC
CONSULTING ENGINEERS
S. A. W. & A. C. U. E. T.
P. 0409.888.2027 F. 0409.888.0274
www.wrightengineering.net

DRAWING INTENT IS TO INDICATE GENERAL DESIGN AND APPROXIMATE LOCATIONS ONLY. THIS DRAWING IS A PRELIMINARY DIAGRAMMATIC. IT SHALL NOT BE SCALED FOR OR SERVED AS ERECTION CONTRACT DOCUMENTS. CONTRACTORS ARE RESPONSIBLE FOR VERIFICATION OF DIMENSIONS.

I CERTIFY THAT THESE DOCUMENTS WERE PREPARED, CHECKED, DESIGNED AND DRAWN BY ME AND THAT I AM A FULLY LICENSED ARCHITECT UNDER THE LAWS OF THE STATE OF MARYLAND.

LICENSE No. 08278 DATE EXPIRES 09.02.14

BUSHEY FEIGHT MORIN ARCHITECTS INC.
473 North Potomac Street, Hagerstown, Md 21140
301-733-5600 Fax 301-733-5612
E-mail: BFM@BFMArchitects.com

© copyright 2014, Bushey Feight Morin Architects, Inc.

BFM

BUSHEY FEIGHT MORIN ARCHITECTS INC.

WASH. CO. ADMINISTRATION COMPLEX
FIRST FLOOR RENOVATIONS

BID DOCUMENTS

FIRST FLOOR PLAN - SECURITY

TE2.1

5 OF 12 SHEETS

DATE: 08.15.14