

# Charles Washington Hall

## RENOVATIONS

Corner of George & Washington Streets  
Charles Town, W. Va.

For the  
City of Charles Town  
City of Ranson

Planning & Engineering (prime)  
**Hall Planning & Engineering, Inc**  
316 Williams Street  
Tallahassee, FL 32303

Landscape Architecture  
**Stromberg/Garrigan & Assoc., Inc.**  
102 E. Main Street - The Penn Bldg  
Somerset, PA 15501

Historic Preservation & Architecture  
**Landmarks SGA, LLC**  
102 E. Main Street - The Penn Bldg  
Somerset, PA 15501

Structural Engineer  
**R.L. Silman Associates**  
1053 31st Street NW  
Washington D.C. 20007

Mech/Elect Engineer  
**Comfort Designs**  
620 Pennsylvania Avenue  
Winchester, VA 22601

Architect  
**GROVE & DALL'OLIO**  
ARCHITECTS PLLC  
220 WEST KING • MARTINSBURG, WEST VIRGINIA • 25401

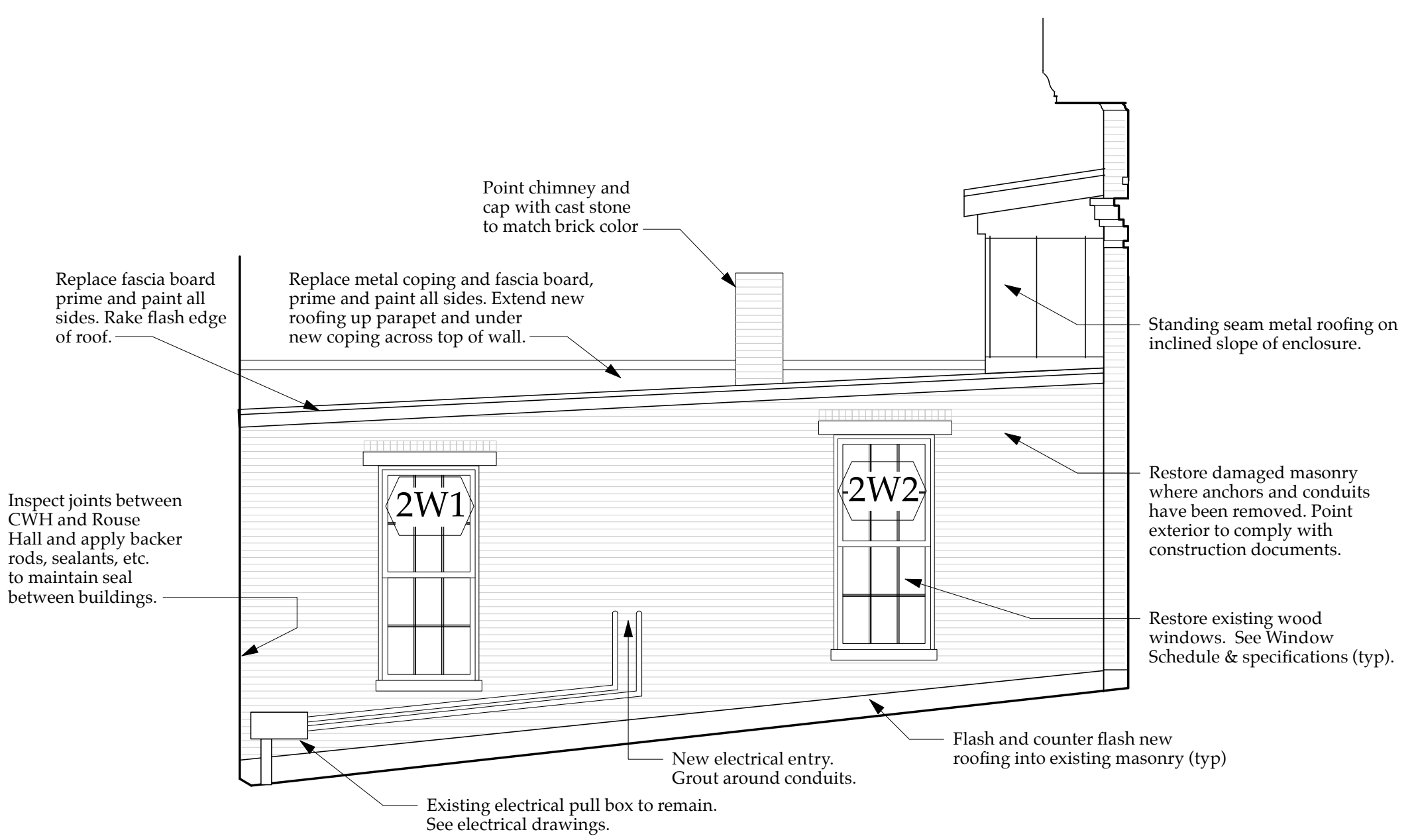
Issue / Revision Seal  
STATE OF WEST VIRGINIA  
REGISTERED ARCHITECT  
MATTHEW W. GROVE  
NO. 2616

Drawing Title

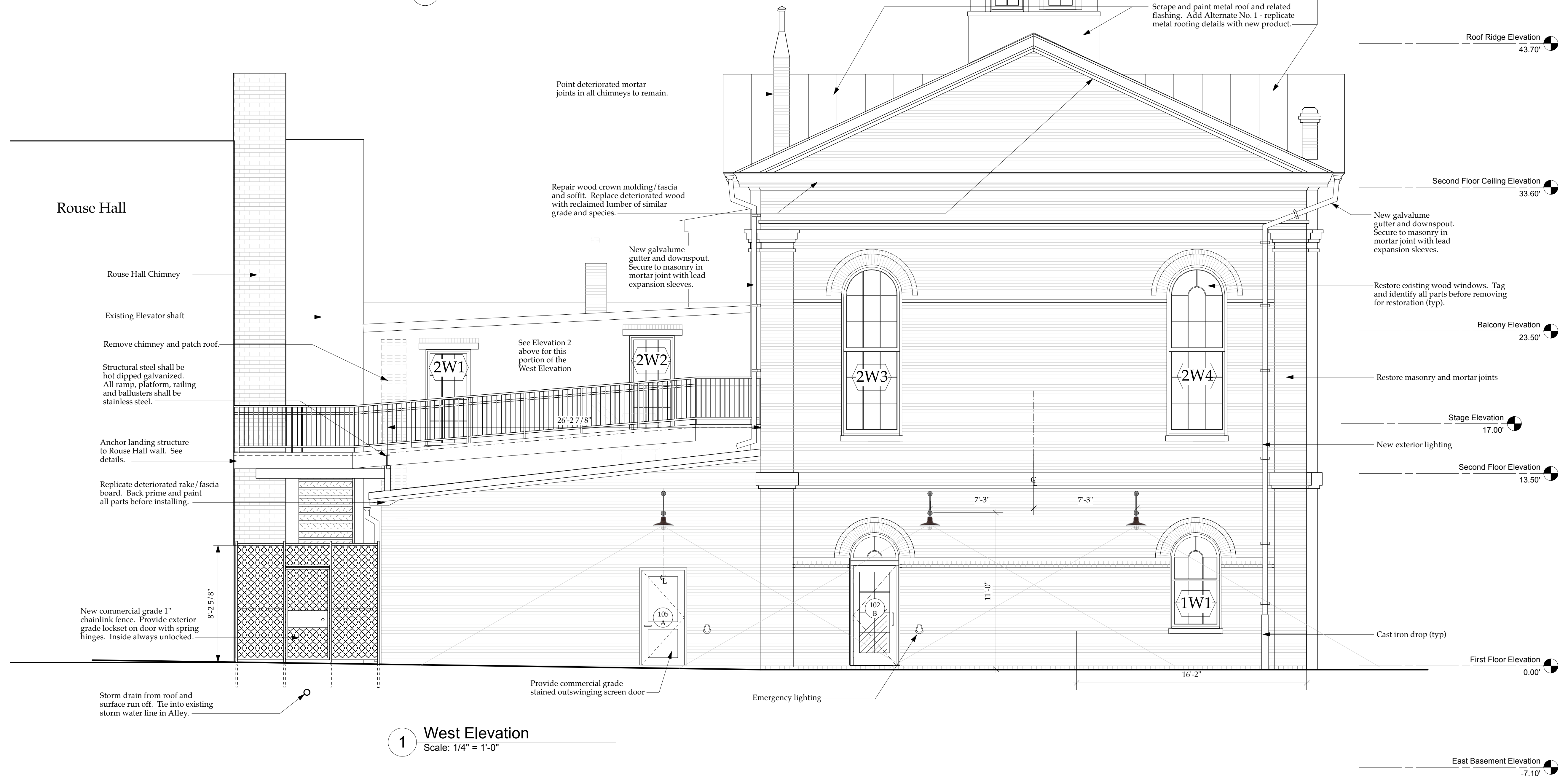
### West Elevation

Date 10/22/14  
Scale Project Number 11105  
Drawing Number

# A4.4



2 West Elev. of East Wing  
Scale: 1/4" = 1'-0"



1 West Elevation  
Scale: 1/4" = 1'-0"