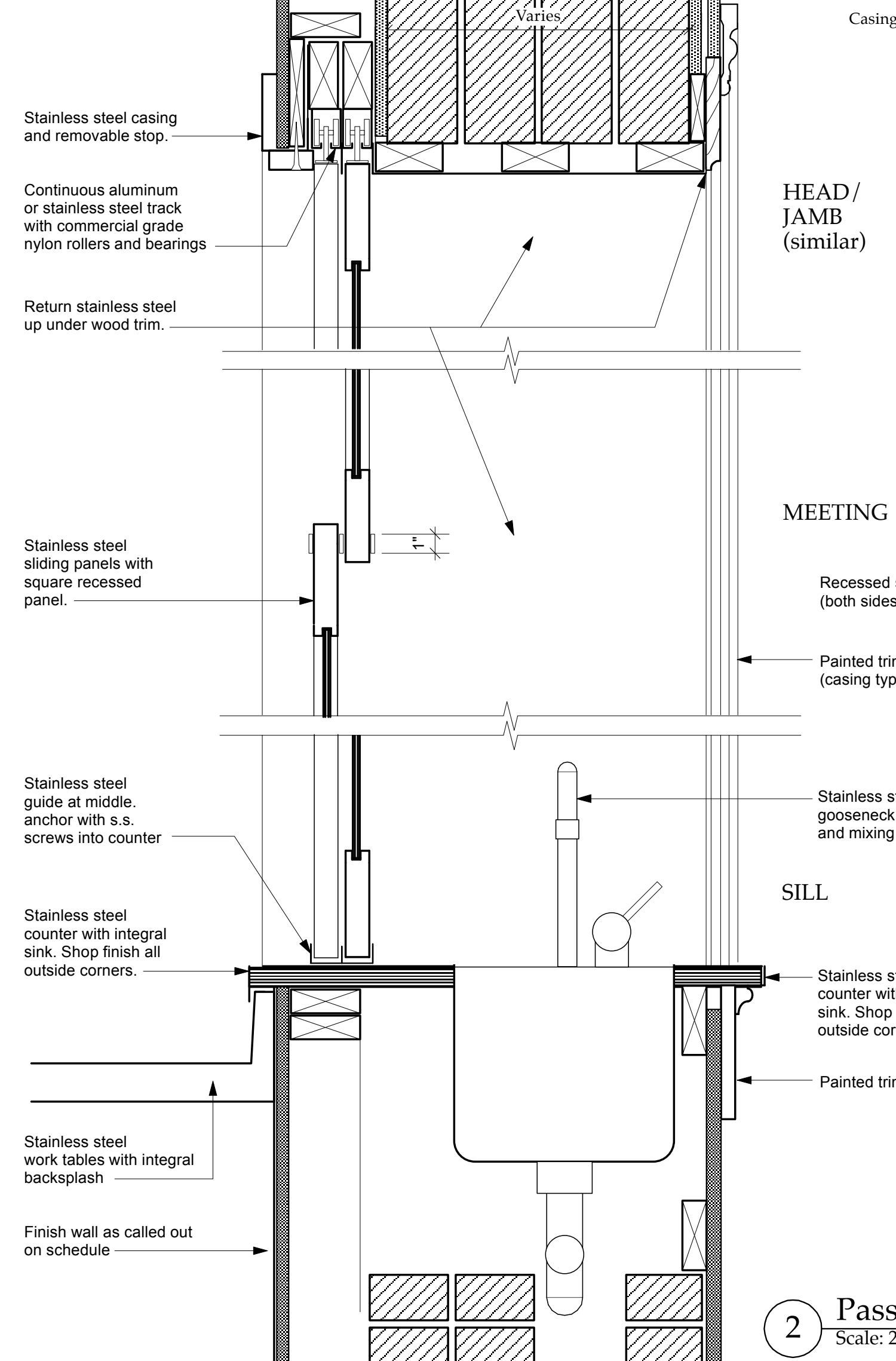
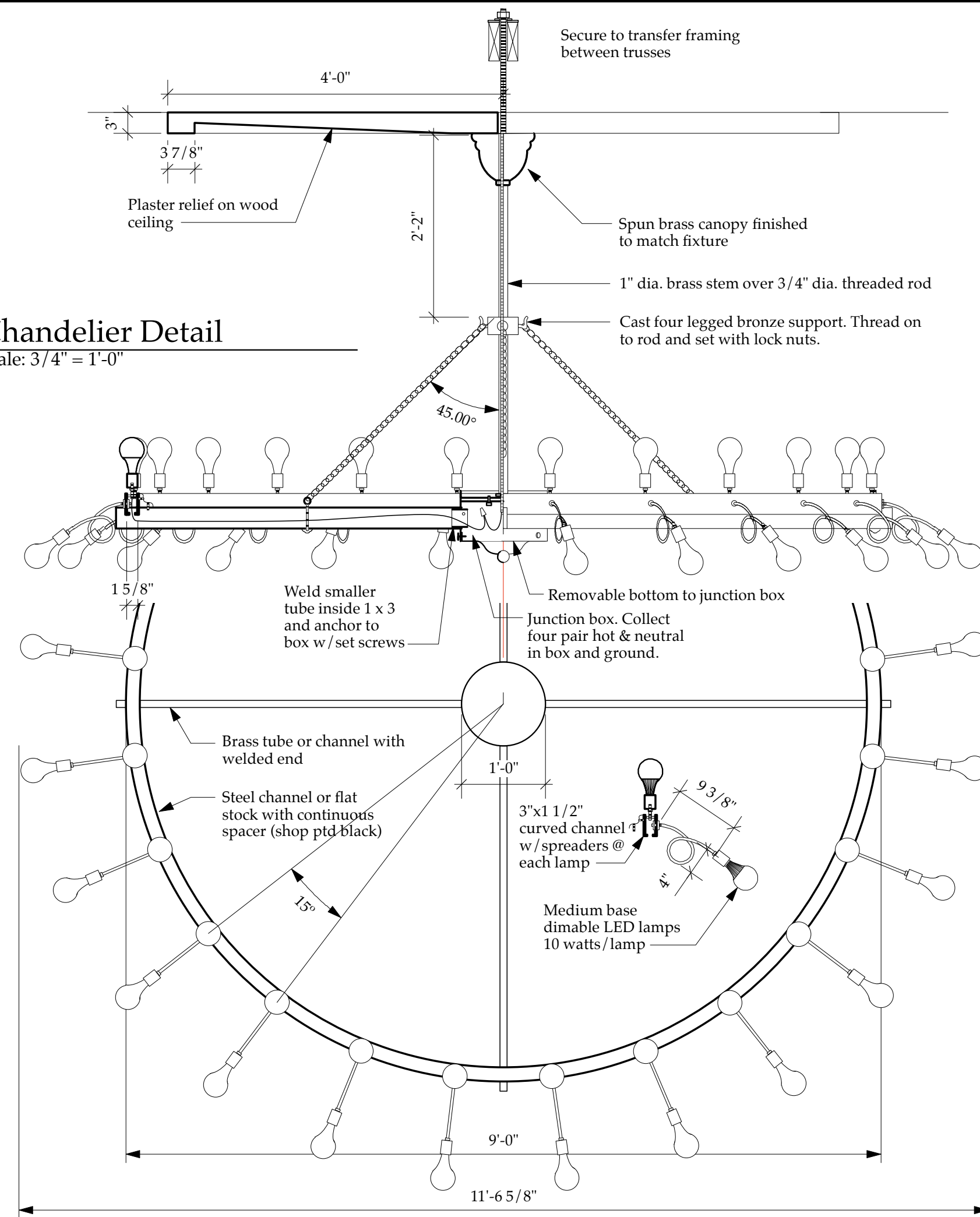
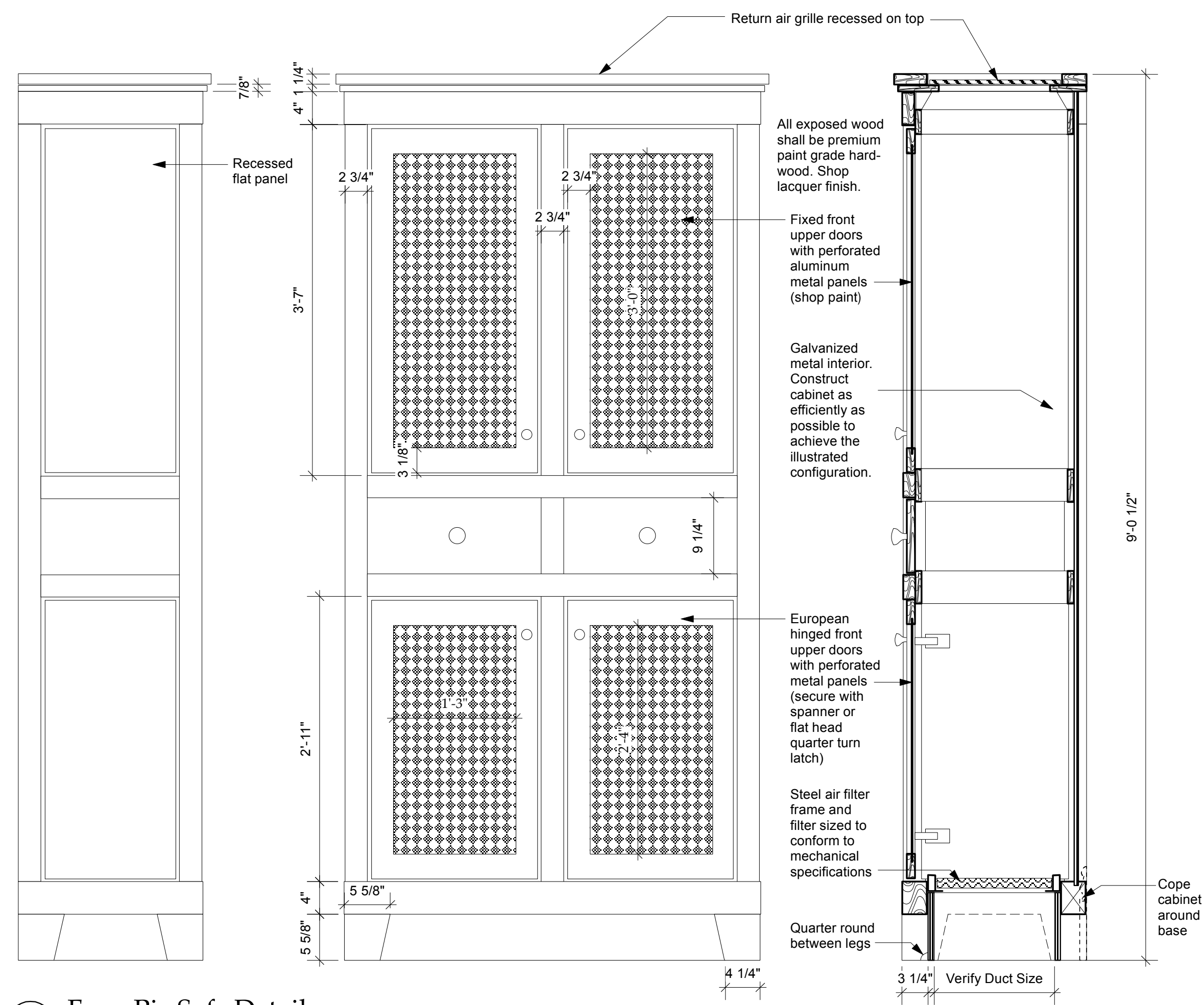


1 Chandelier Detail
Scale: 3/4" = 1'-0"



3 Pass-Thru Detail
Scale: 2" = 1'-0"

2 Pass-Thru Door Detail
Scale: 2" = 1'-0"



4 Faux Pie Safe Details
Scale: 1" = 1'-0"

NORTH (magnetic)

Charles Washington Hall RENOVATIONS
Corner of George & Washington Streets
Charles Town, W. Va.

For the
City of Charles Town
City of Ranson

Planning & Engineering (prime)
Hall Planning & Engineering, Inc
316 Williams Street
Tallahassee, FL 32303

Landscape Architecture
Stromberg/Garrigan & Assoc., Inc.
102 E. Main Street - The Penn Bldg
Somerset, PA 15501

Historic Preservation & Architecture
Landmarks SGA, LLC
102 E. Main Street - The Penn Bldg
Somerset, PA 15501

Structural Engineer
R.L. Silman Associates
1053 31st Street NW
Washington D.C. 20007

Mech/Elect Engineer
Comfort Designs
620 Pennsylvania Avenue
Winchester, VA 22601

Architect
GROVE & DALL'OLIO ARCHITECTS PLLC
220 WEST KING • MARTINSBURG, WEST VIRGINIA • 25401

Issue / Revision Seal
STATE OF WEST VIRGINIA
MATTHEW W. GROVE
NO. 2616
REGISTERED ARCHITECT

Drawing Title

Interior Details

Date 10/22/14
Scale Project Number 11105
Drawing Number

A9.3