

Charles Washington Hall RENOVATIONS

Corner of George & Washington Streets
Charles Town, W.Va.

For the
City of Charles Town
City of Ranson

Planning & Engineering (prime)
Hall Planning & Engineering, Inc
316 Williams Street
Tallahassee, FL 32303

Landscape Architecture
Stromberg/Garrigan & Assoc., Inc.
102 E. Main Street-The Penn Bldg
Somerset, PA 15501

Historic Preservation & Architecture
Landmarks SGA, LLC
102 E. Main Street-The Penn Bldg
Somerset, PA 15501

Structural Engineer
R.L. Silman Associates
1053 31st Street NW
Washington D.C. 20007

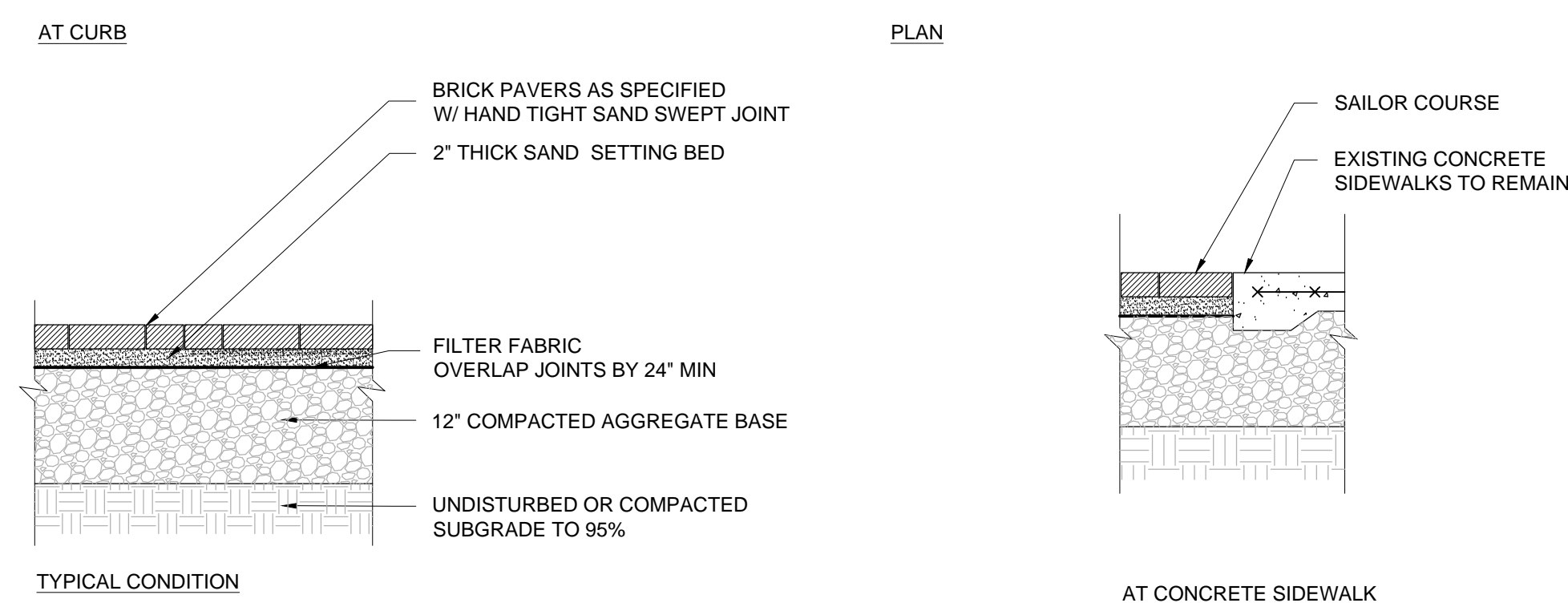
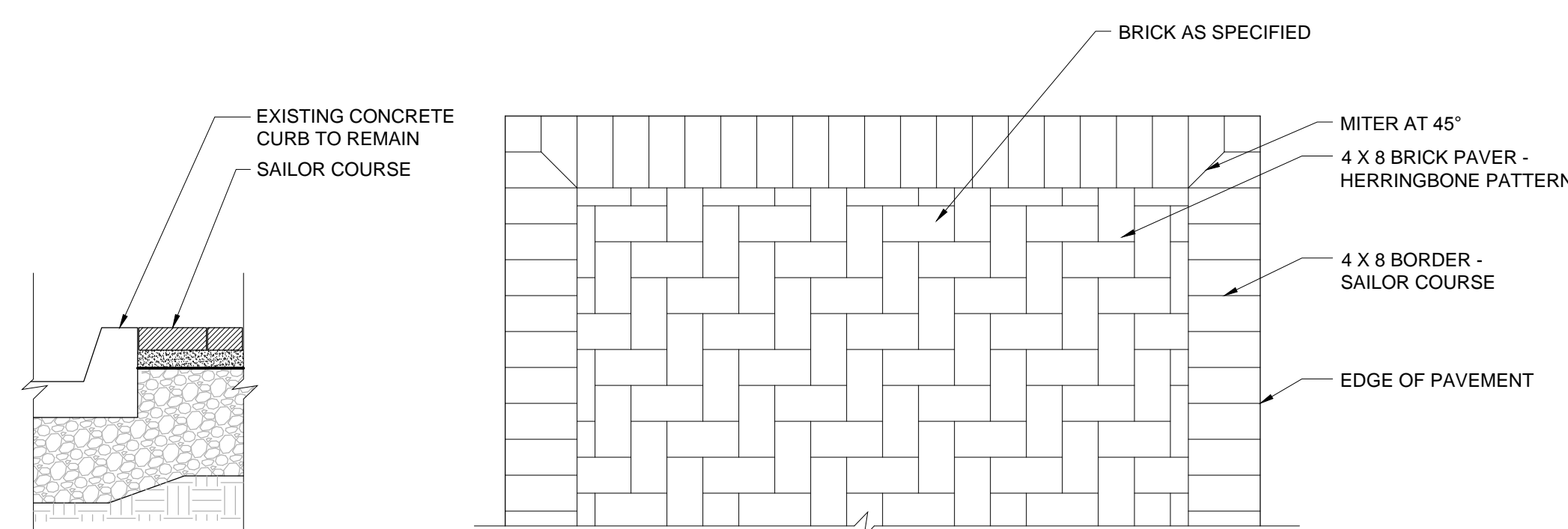
Mech/Elect Engineer
Comfort Designs
620 Pennsylvania Avenue
Winchester, VA 22601

Architect

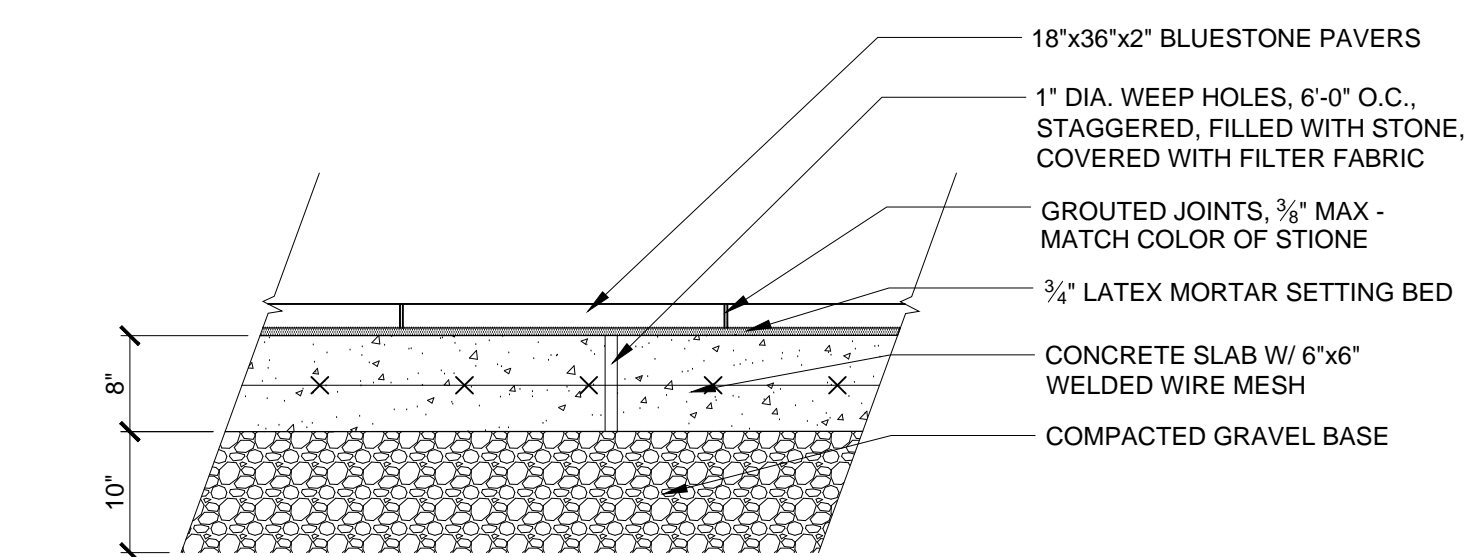
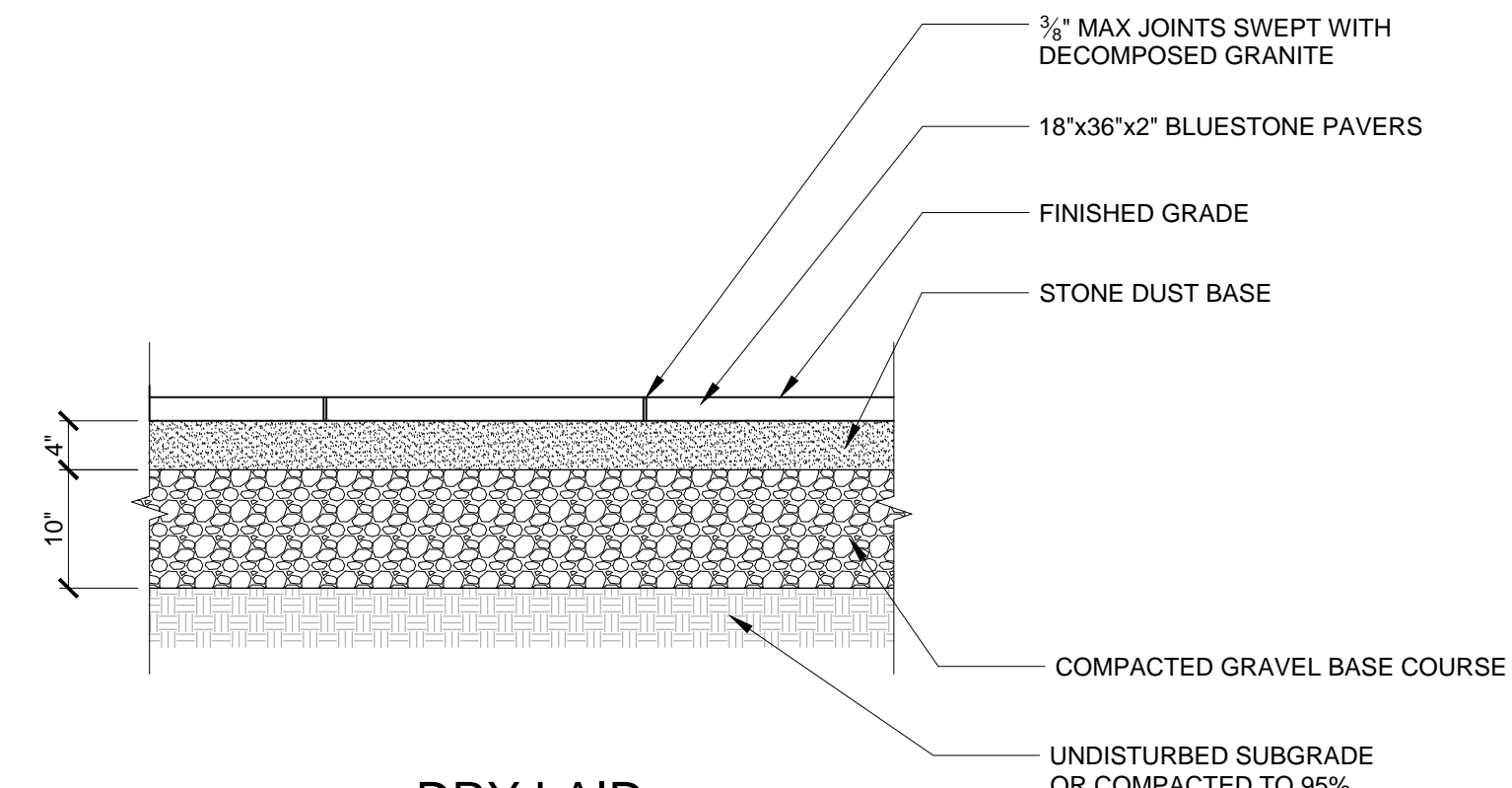
GROVE & DALL'OLIO
ARCHITECTS^{PLLC}

220 WEST KING • MARTINSBURG, WEST VIRGINIA • 25401

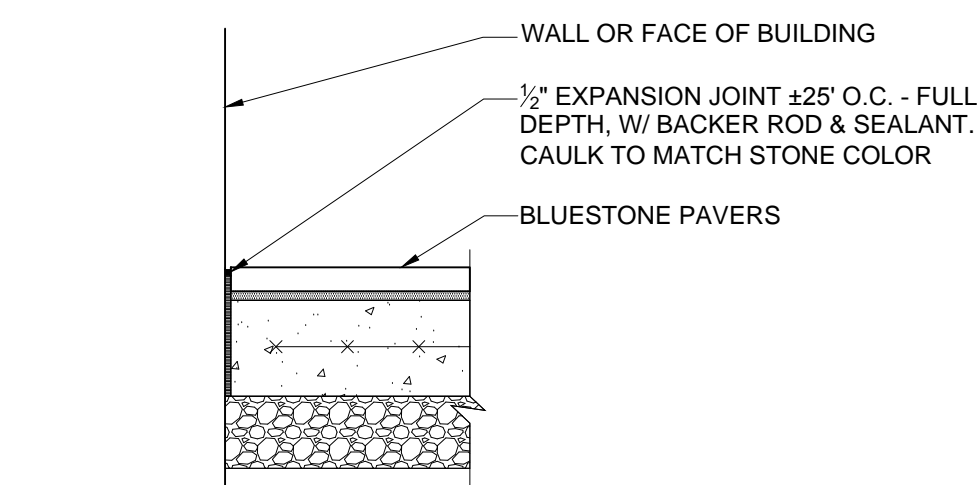
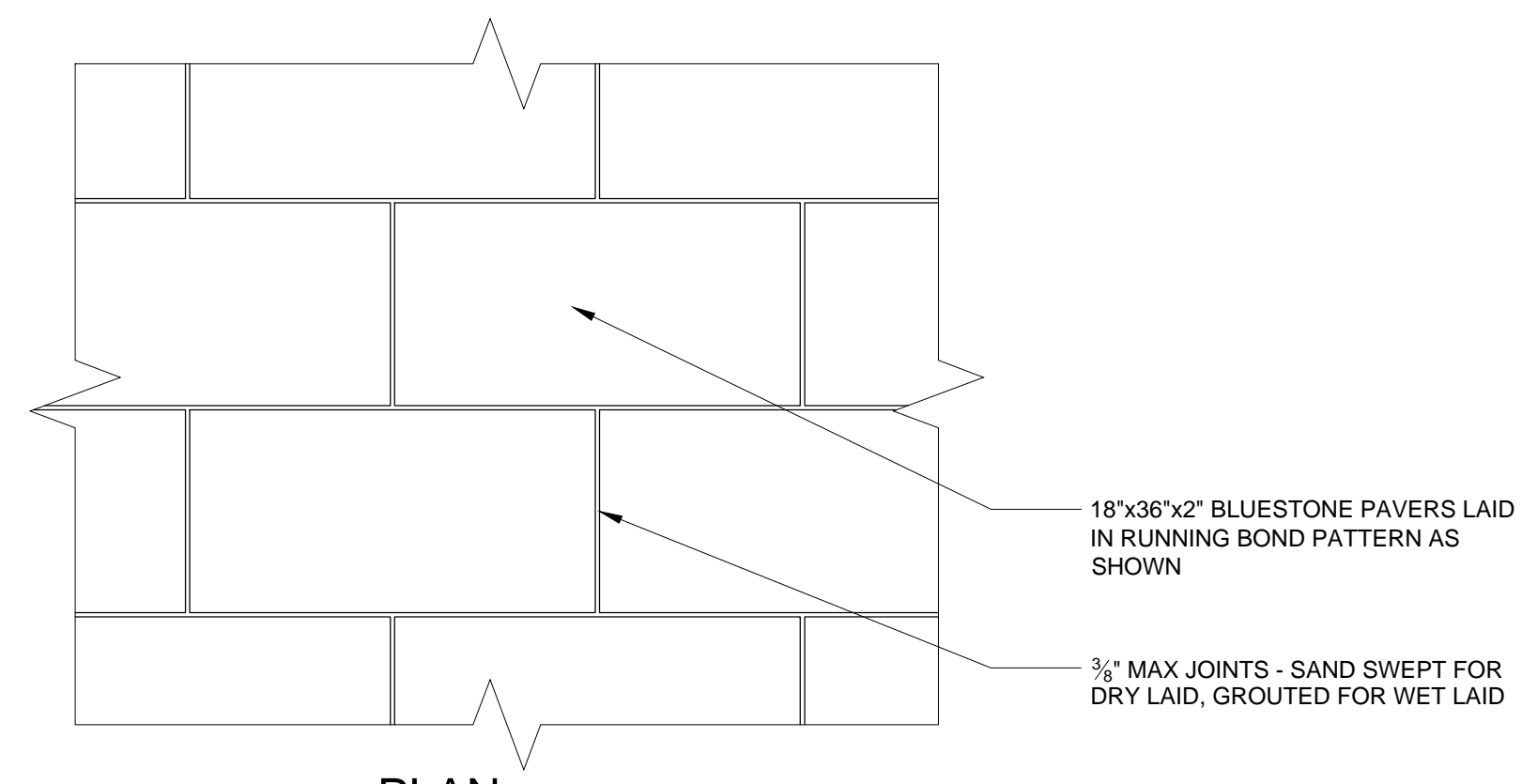
Issue/Revision	Seal
TIMOTHY STROMBERG P.L.A. NO. 360 DATE: 10/14/14	
Drawing Title	



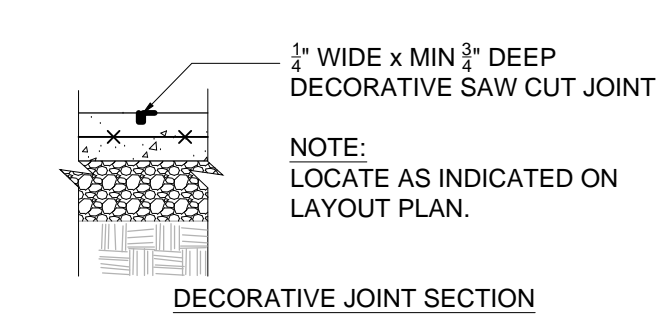
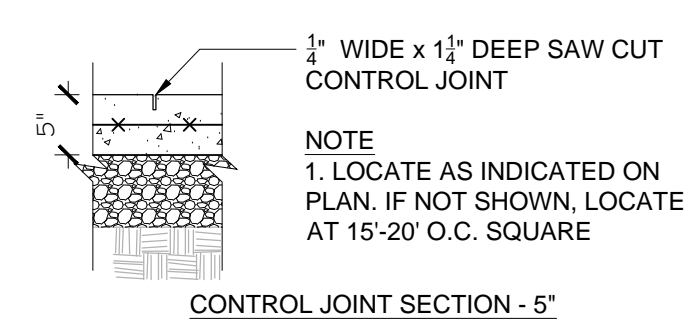
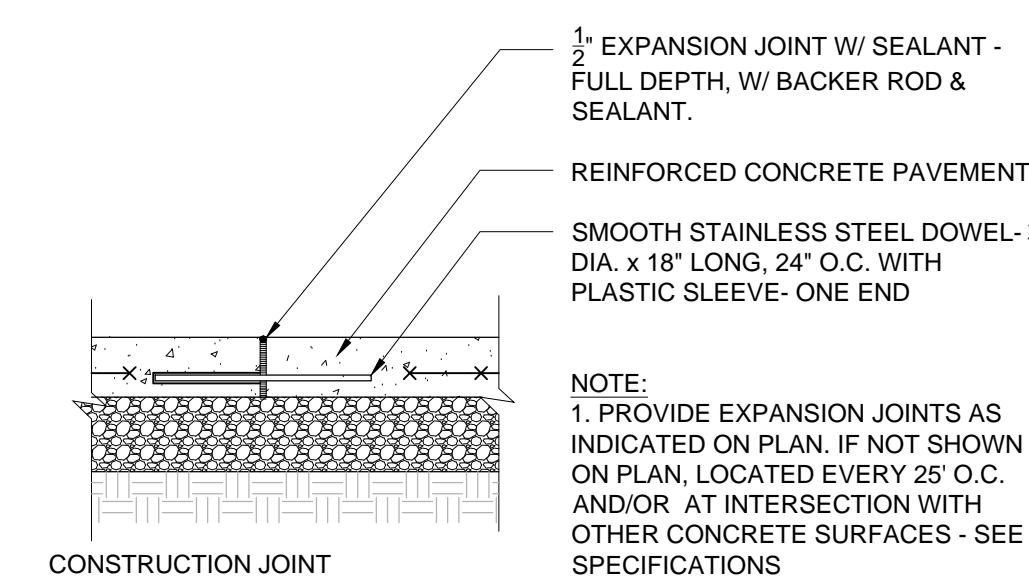
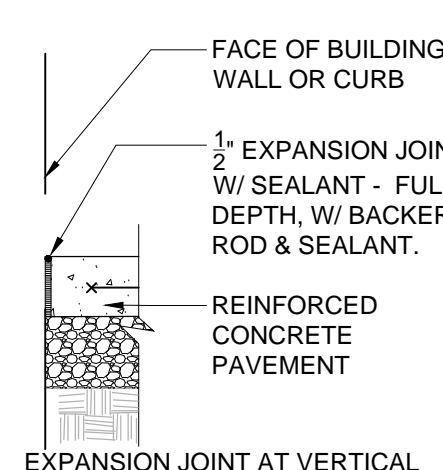
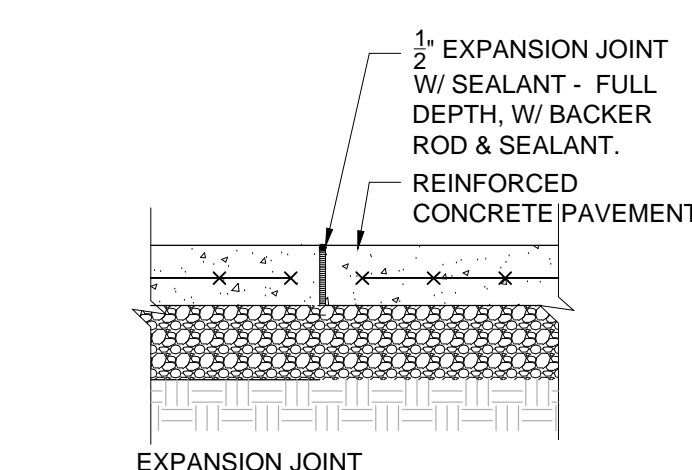
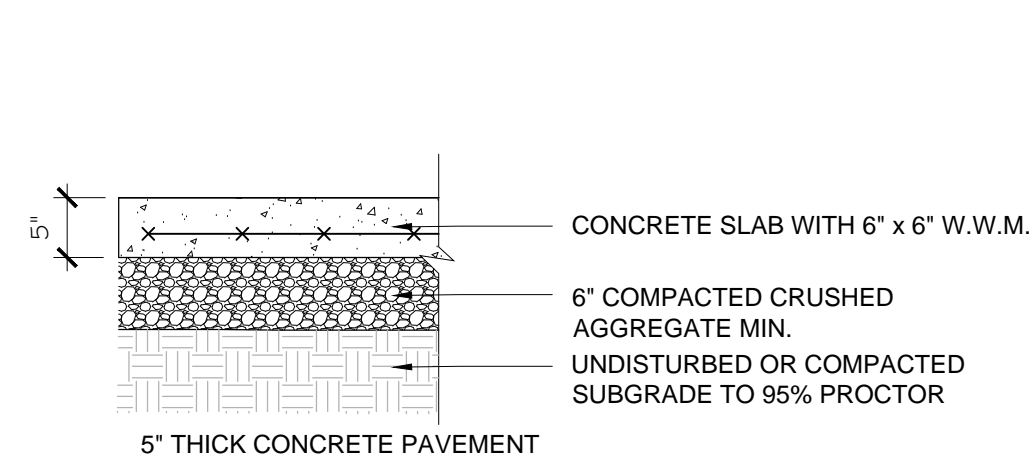
A BRICK PAVING
SCALE: 3/4" = 1'-0"



B BLUESTONE PAVING
SCALE: 3/4" = 1'-0"

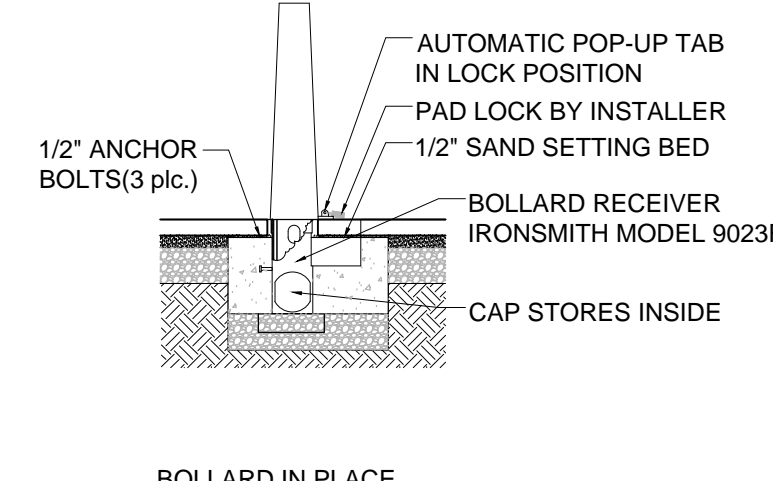
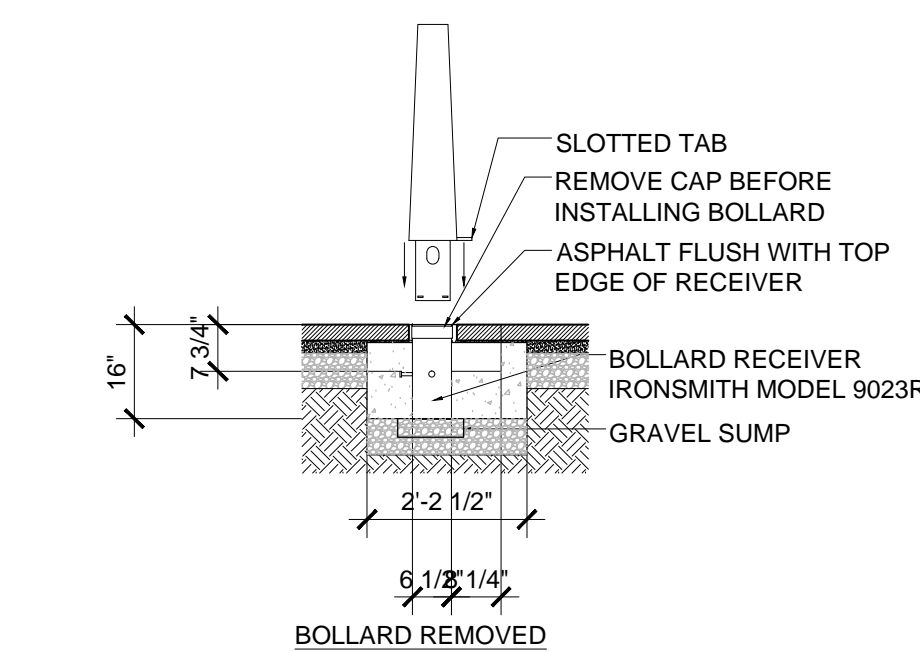


AT WALL

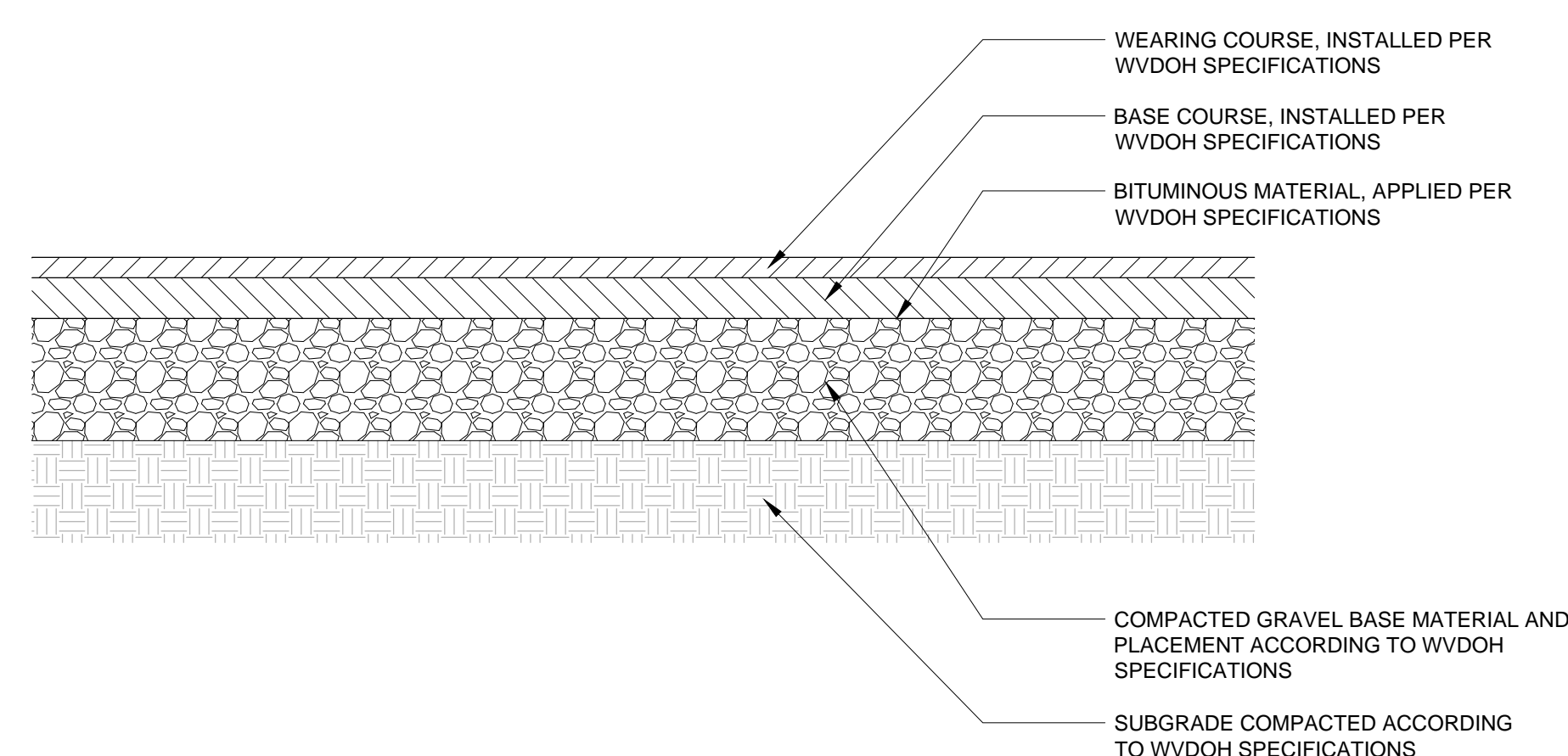


C CONCRETE PAVING DETAILS
SCALE: 3/4" = 1'-0"

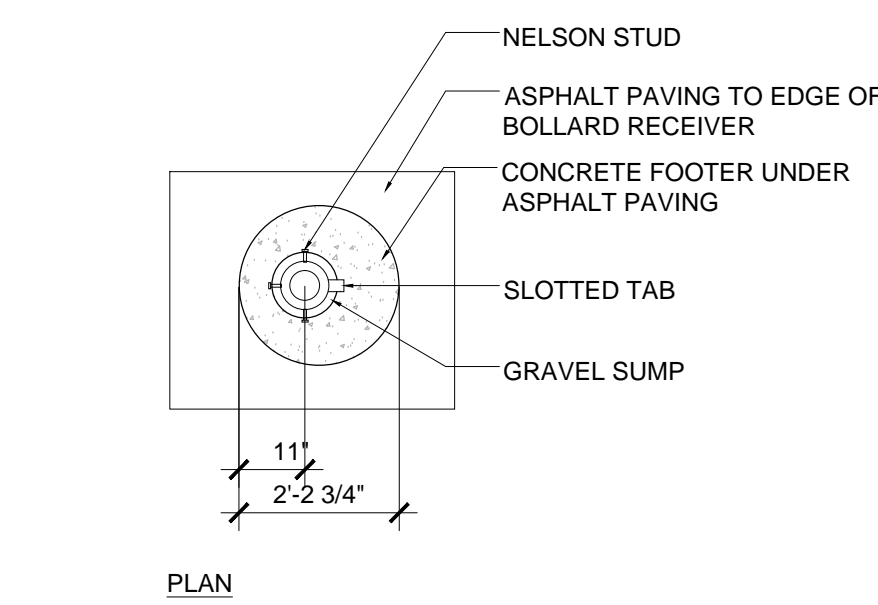
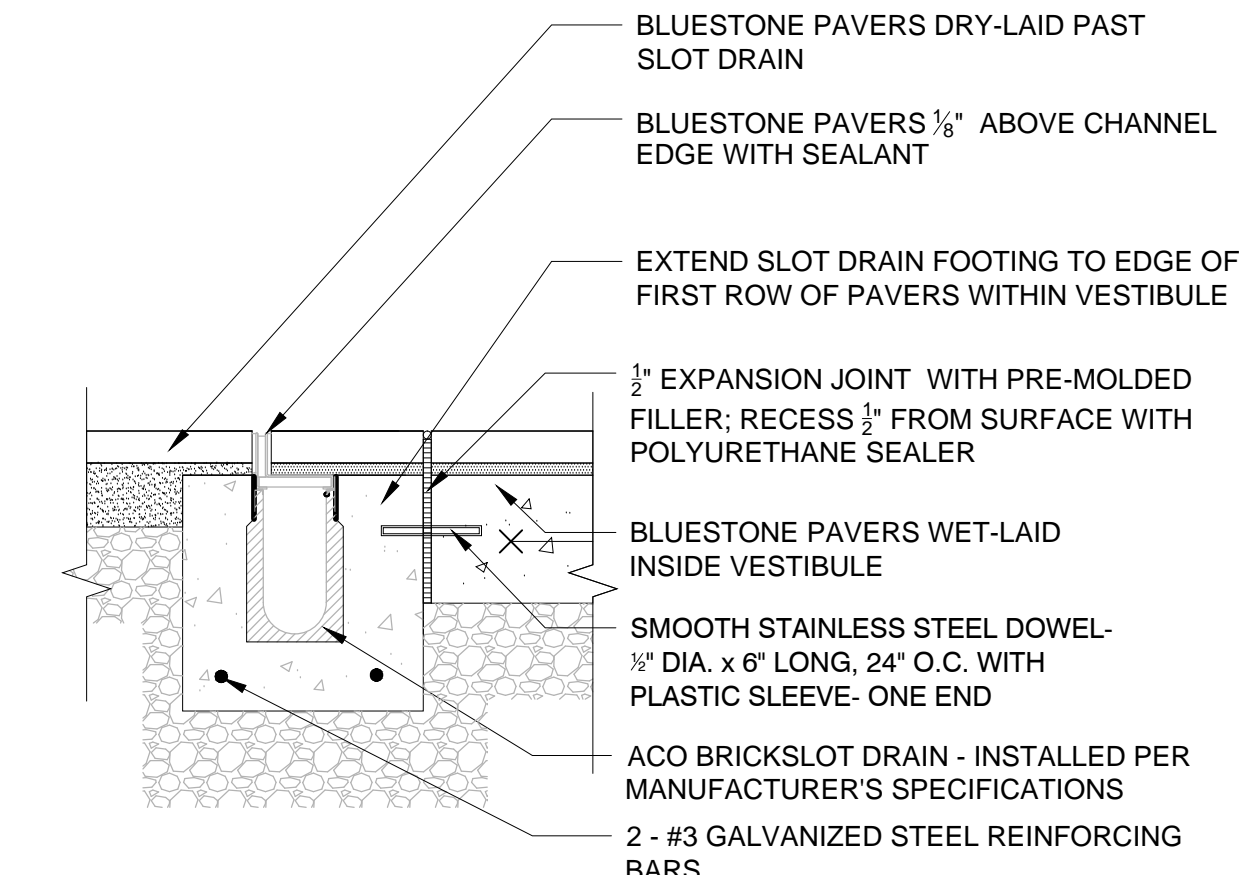
D ASPHALT PAVING
SCALE: 1/2" = 1'-0"



E REMOVABLE BOLLARD DETAIL
SCALE: 3/8" = 1'-0"



E SLOT DRAIN INSTALLATION
SCALE: 1" = 1'-0"



SITE DETAILS

Date 10/14/14
Scale: As Shown Project Number 11105

L2.1