

NORTH (magnetic)

Charles Washington Hall RENOVATIONS

Corner of George & Washington Streets
Charles Town, W. Va.

For the
City of Charles Town
City of Ranson

Planning & Engineering (prime)
Hall Planning & Engineering, Inc
316 Williams Street
Tallahassee, FL 32303

Landscape Architecture
Stromberg/Garrigan & Assoc., Inc.
102 E. Main Street - The Penn Bldg
Somerset, PA 15501

Historic Preservation & Architecture
Landmarks SGA, LLC
102 E. Main Street - The Penn Bldg
Somerset, PA 15501

Structural Engineer
R.L. Silman Associates
1053 31st Street NW
Washington D.C. 20007

Mech/Elect Engineer
Comfort Designs
620 Pennsylvania Avenue
Winchester, VA 22601

Architect
GROVE & DALL'OLIO
ARCHITECTS PLLC
220 WEST KING • MARTINSBURG, WEST VIRGINIA • 25401

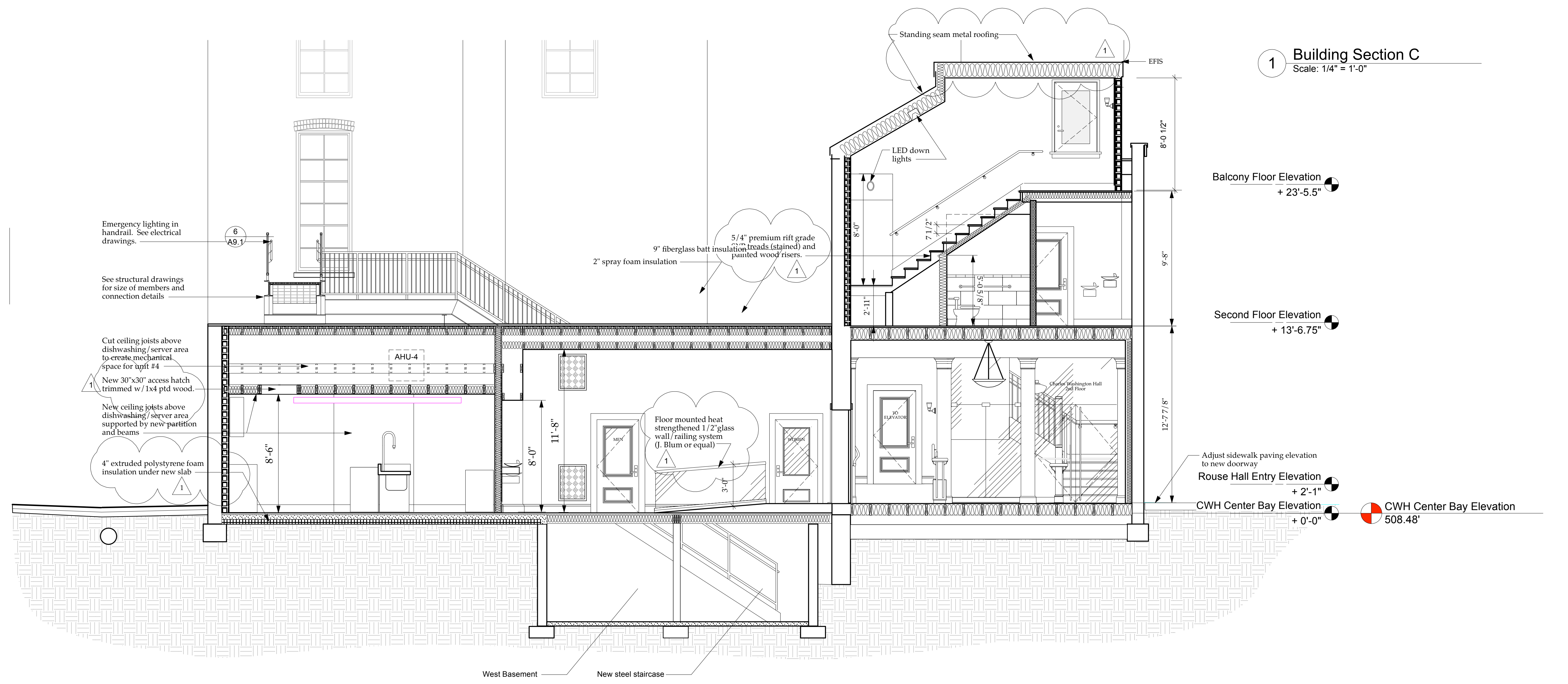
Issue / Revision Seal
1 Bid Phase Revisions 03/04/15

Drawing Title
Building Sections C & D

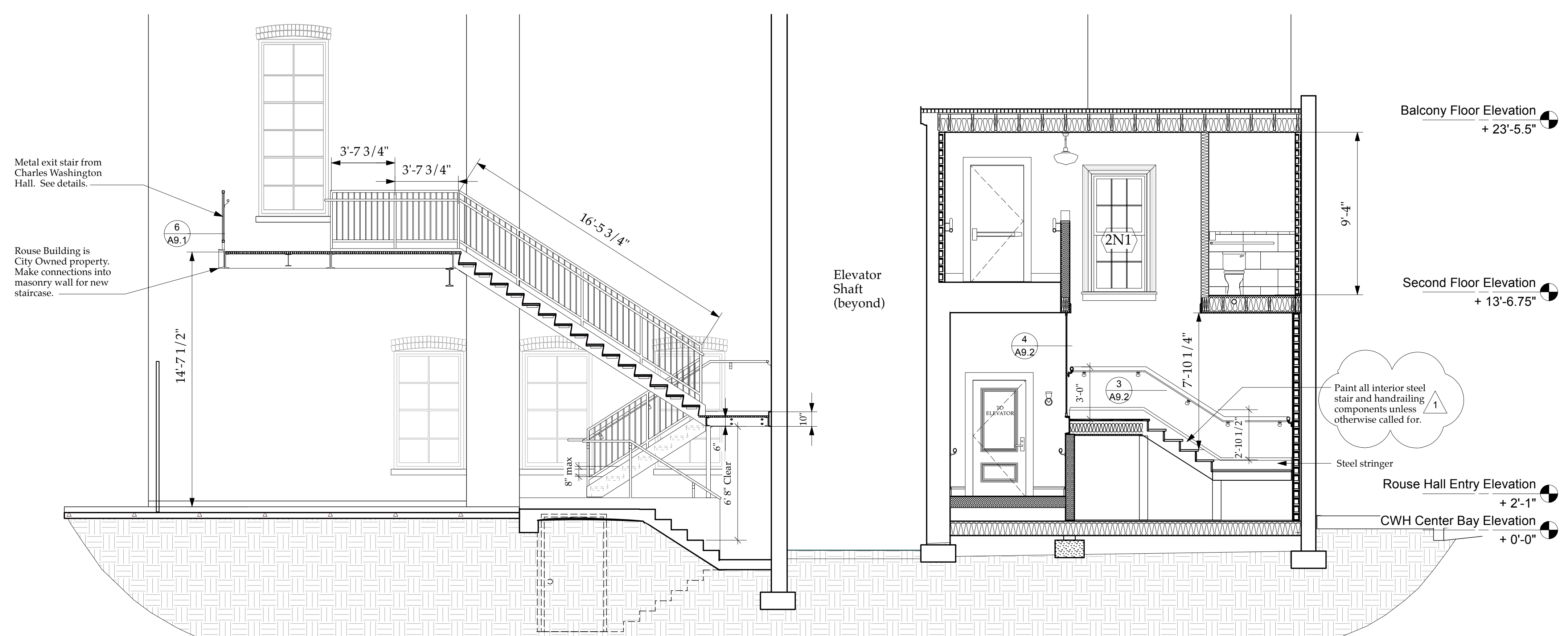
Date 10/22/14
Scale Project Number 11105
Drawing Number

A5.3

1 Building Section C
Scale: 1/4" = 1'-0"



2 Building Section D
Scale: 1/4" = 1'-0"



Emergency lighting in handrail. See electrical drawings.

See structural drawings for size of members and connection details.

Cut ceiling joists above dishwashing/server area to create mechanical space for unit #4.

New 30"x30" access hatch trimmed w/1x4 ptd wood.

New ceiling joists above dishwashing/server area supported by new partition and beams.

4" extruded polystyrene foam insulation under new slab.

5/4" premium rift grade treads (stained) and painted wood risers.
9" fiberglass batt insulation
2" spray foam insulation

Floor mounted heat strengthened 1/2" glass wall/railing system (J. Blum or equal)

Balcony Floor Elevation +23'-5.5"

Second Floor Elevation +13'-6.75"

Rouse Hall Entry Elevation +2'-1"

CWH Center Bay Elevation +0'-0"

CWH Center Bay Elevation 508.48'

Adjust sidewalk paving elevation to new doorway

Metal exit stair from Charles Washington Hall. See details.

Rouse Building is City Owned property. Make connections into masonry wall for new staircase.

CWH Alley Elevation 509.27'

Paint all interior steel stair and handrailing components unless otherwise called for.