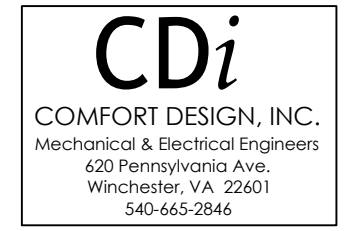
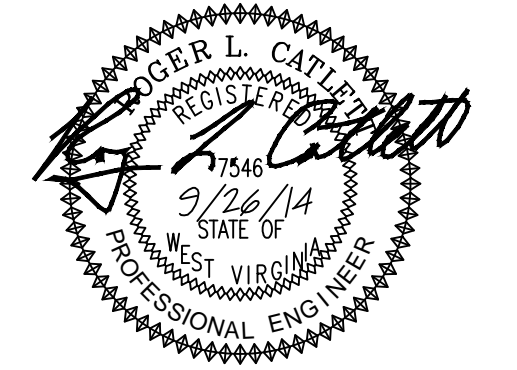


Copyright 2014: COMFORT DESIGN INC. Michael F. Howell, P.E. 10/23/2014 10:21 AM E(CWH).dwg



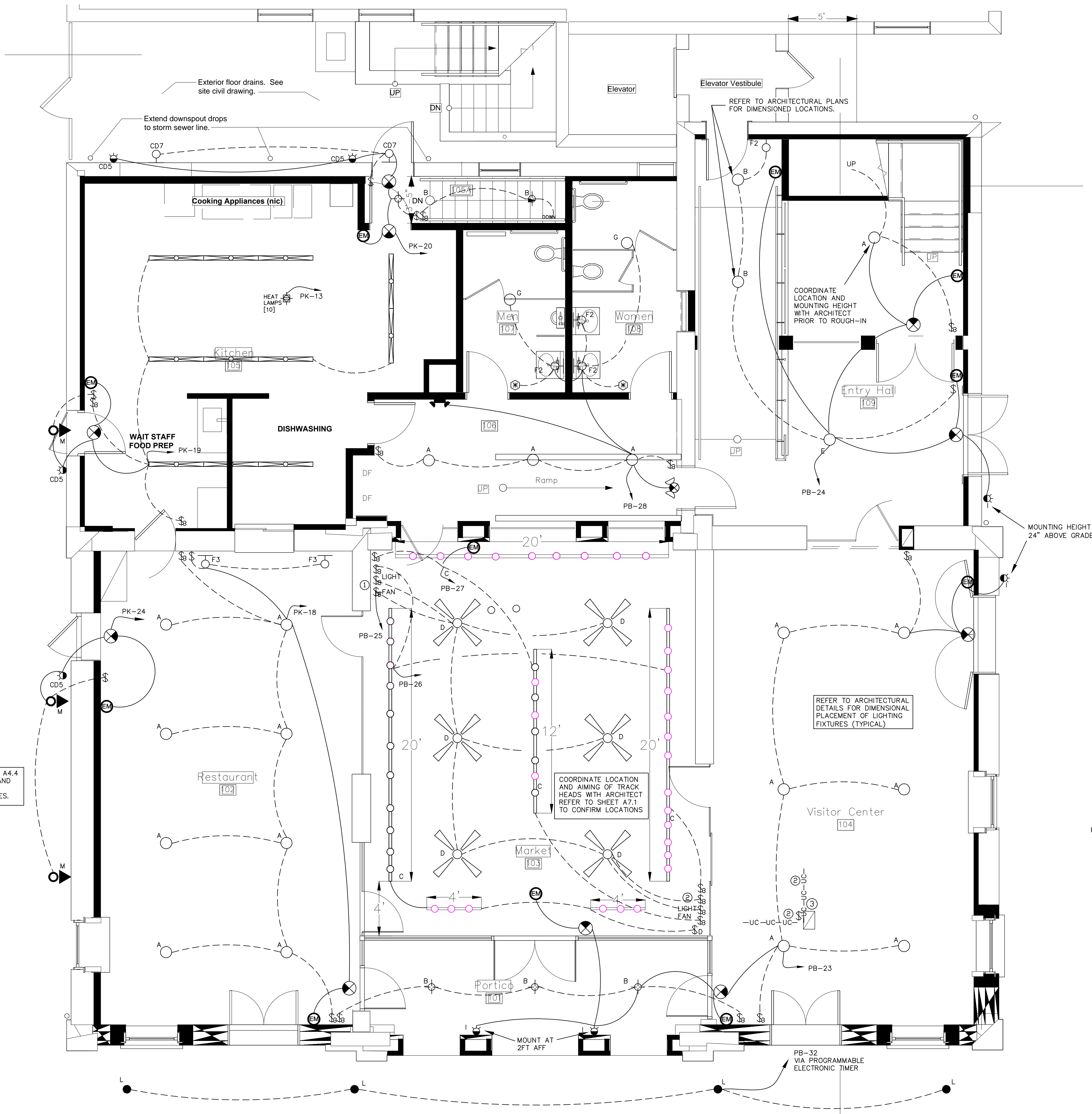
NORTH (magnetic)
Charles Washington Hall
RENOVATIONS
Corner of George & Washington Streets
Charles Town, W.Va.
For the
City of Charles Town
City of Ranson



Planning & Engineering (prime)
Hall Planning & Engineering, Inc
316 Williams Street
Tallahassee, FL 32303
Landscape Architecture
Stromberg/Garrigan & Assoc., Inc.
102 E. Main Street-The Penn Bldg
Somerset, PA 15501
Historic Preservation & Architecture
Landmarks SGA, LLC
102 E. Main Street-The Penn Bldg
Somerset, PA 15501
Structural Engineer
R.L. Silman Associates
1053 31st Street NW
Washington D.C. 20007
Mech/Elect Engineer
Comfort Designs
620 Pennsylvania Avenue
Winchester, VA 22601
Architect



Issue/Revision	Seal



- § SWITCH
3 DENOTES 3-WAY, 4 DENOTES 4-WAY.
SWITCH AND COVERPLATE TO BE DARK BROWN PLASTIC.
- §K SWITCH- KEY OPERATED.
- §F FAN CONTROL
- ⊗ WALL MOUNTED OCCUPANCY SENSOR SWITCH
- ⊕ CEILING MOUNTED OUTLET FOR HEAT LAMPS. FIELD COORDINATE LOCATION
- ⊙ DIMMER SWITCH, COMPATIBLE WITH LED TRACK LAMP HEADS
- ① WIRING SHALL BE CONCEALED BEHIND BRICK WALL
- ② COORDINATE INSTALLATION WITH ARCHITECT PRIOR TO ROUGH-IN.
- ③ CONNECT TO CIRCUIT THAT SUPPLIES FLOOR BOX FOR COUNTER OUTLET.

- TYPE CD1: STRIP LIGHT WITH WIRE GUARD.
- ⊗ TYPE C2D: EXIT LIGHT
- ⊕ TYPE CD3: RECESSED EMERGENCY LIGHTING UNIT (WALL OR CEILING MOUNT)
- ⊕ TYPE CD4: WALL MOUNTED EMERGENCY LIGHT
- ⊕ TYPE CD5: EXTERIOR EMERGENCY EGRESS
- TYPE CD6: LIGHT UNDER RAIL LED EMERGENCY LIGHTING
- ⊕ TYPE CD7: WALL MOUNTED UTILITY LIGHT
- ⊕ TYPE CD8: ENCLOSED STRIP FIXTURE
- ⊕ TYPE CD9: FESTOON LIGHTING
- ⊕ TYPE CD10: DUAL HEAD FLOODLIGHT
- ⊕ TYPE CD11: WALLPACK
- UC---UC---UC--- TYPE CD12: UNDER COUNTER LIGHTS

NOTE: SEE ARCHITECT'S RCP AND INTERIOR ELEVATION DRAWINGS FOR LIGHT FIXTURE LOCATIONS.

1ST FLOOR LIGHTING PLAN
E1-2 1/4" = 1'-0"