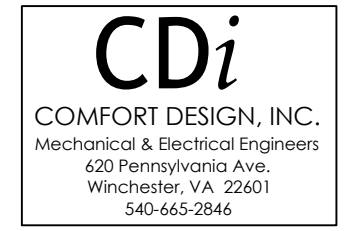
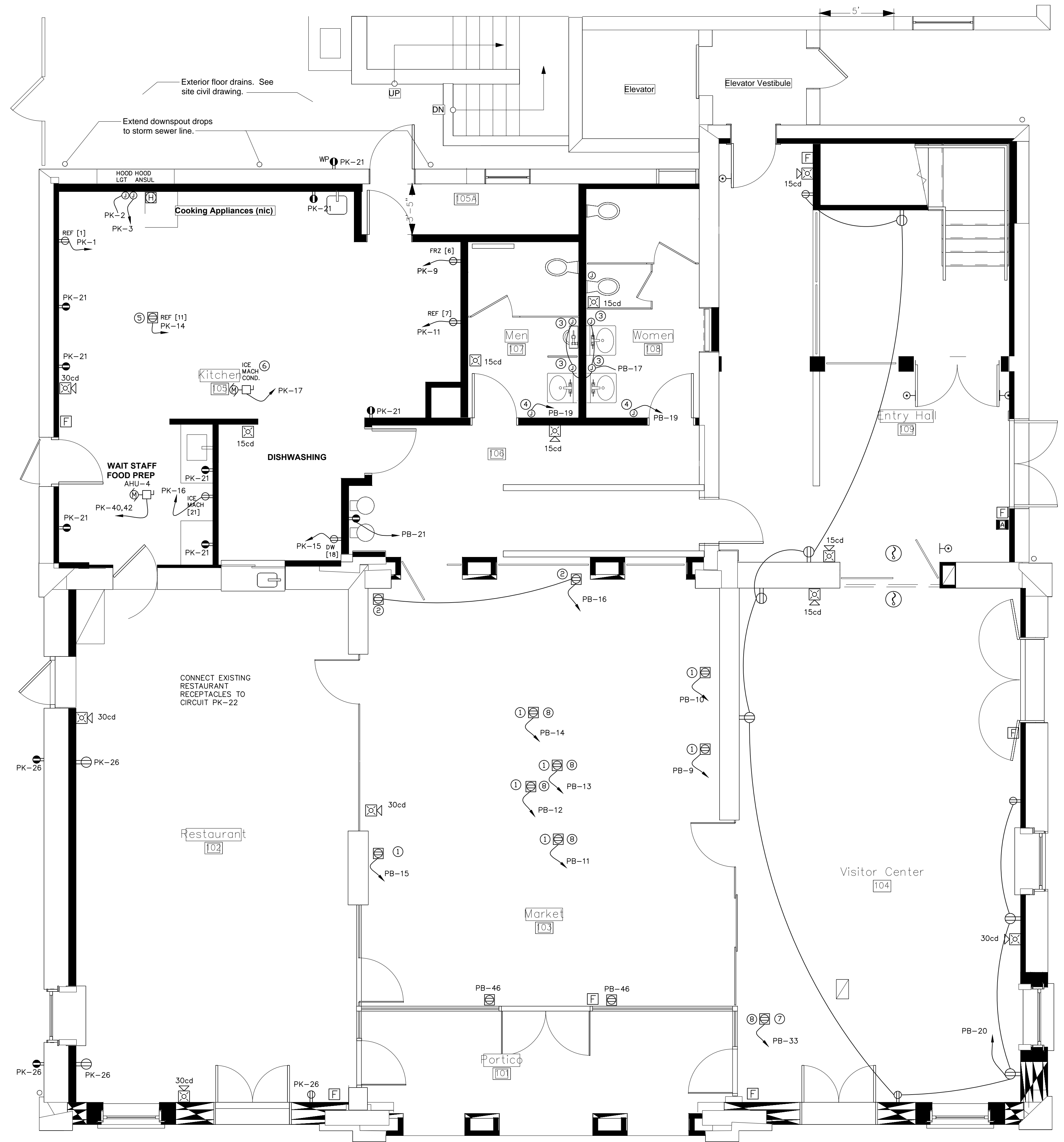


Copyright 2014: COMFORT DESIGN INC. Michael F. Howell, P.E. 10/4/2014 11:39 AM E(CWH).dwg



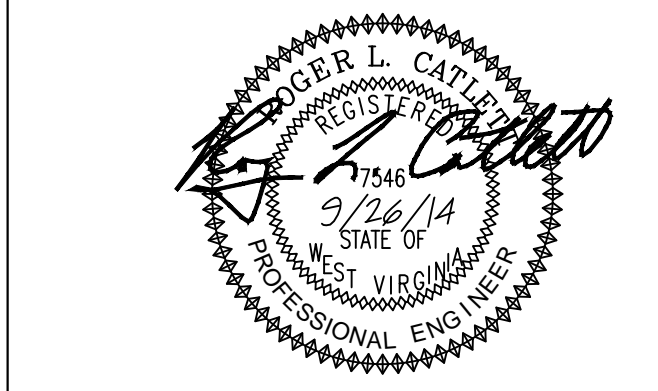
Charles Washington Hall RENOVATIONS
Corner of George & Washington Streets
Charles Town, W.Va.
For the
City of Charles Town
City of Ranson



- ① RECESSED FLOOR OUTLET FOR REFRIGERATED AIR CURTAIN MERCHANDISER. REFER TO ARCHITECTURAL SHEETS FOR FINAL LOCATION OF OUTLET.
- ② RECESSED FLOOR OUTLET FOR SHELVING UNIT. REFER TO ARCHITECTURAL SHEETS FOR FINAL LOCATION OF OUTLET.
- ③ JUNCTION BOX FOR ELECTRICALLY ACTUATED PLUMBING FIXTURE. COORDINATE REQUIREMENTS WITH PLUMBER.
- ④ ELECTRICAL HAND DRYER. REFER TO ARCHITECTURAL SHEETS FOR FINAL PLACEMENT.
- ⑤ RECESSED FLOOR OUTLET FOR UNDERCOUNTER REFRIGERATOR. FIELD COORDINATE LOCATION.
- ⑥ ICE MACHINE CONDENSER. FIELD LOCATE.
- ⑦ RECESSED FLOOR OUTLET, DUAL CHANNEL BOX (POWER/DATA)
- ⑧ CONFIRM LOCATION WITH ARCHITECT PRIOR TO ROUGH-IN.

GEORGE STREET

1
E2-2 1/4" = 1'-0"
1ST FLOOR POWER PLAN



Planning & Engineering (prime)
Hall Planning & Engineering, Inc
316 Williams Street
Tallahassee, FL 32303

Landscape Architecture
Stromberg/Garrigan & Assoc., Inc.
102 E. Main Street-The Penn Bldg
Somerset, PA 15501

Historic Preservation & Architecture
Landmarks SGA, LLC
102 E. Main Street-The Penn Bldg
Somerset, PA 15501

Structural Engineer
R.L. Silman Associates
1053 31st Street NW
Washington D.C. 20007

Mech/Elect Engineer
Comfort Designs
620 Pennsylvania Avenue
Winchester, VA 22601

Architect



Issue/Revision	Seal

Drawing Title
1ST FLOOR POWER PLAN
Date 9/28/14
Scale Project Number 11105
Drawing Number

E2.2