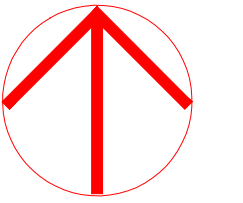


NORTH (magnetic)



Charles Washington Hall
RENOVATIONS
Corner of George & Washington Streets
Charles Town, W.Va.

For the
City of Charles Town
City of Ranson

Planning & Engineering (prime)

Hall Planning & Engineering, Inc
316 Williams Street
Tallahassee, FL 32303

Landscape Architecture

Stromberg/Garrigan & Assoc., Inc.
102 E. Main Street-The Penn Bldg
Somerset, PA 15501

Historic Preservation & Architecture

Landmarks SGA, LLC
102 E. Main Street-The Penn Bldg
Somerset, PA 15501

Structural Engineer

R.L. Silman Associates
1053 31st Street NW
Washington D.C. 20007

Mech/Elect Engineer

Comfort Design, Inc.
620 Pennsylvania Avenue
Winchester, VA 22601

Architect



Issue/Revision Seal

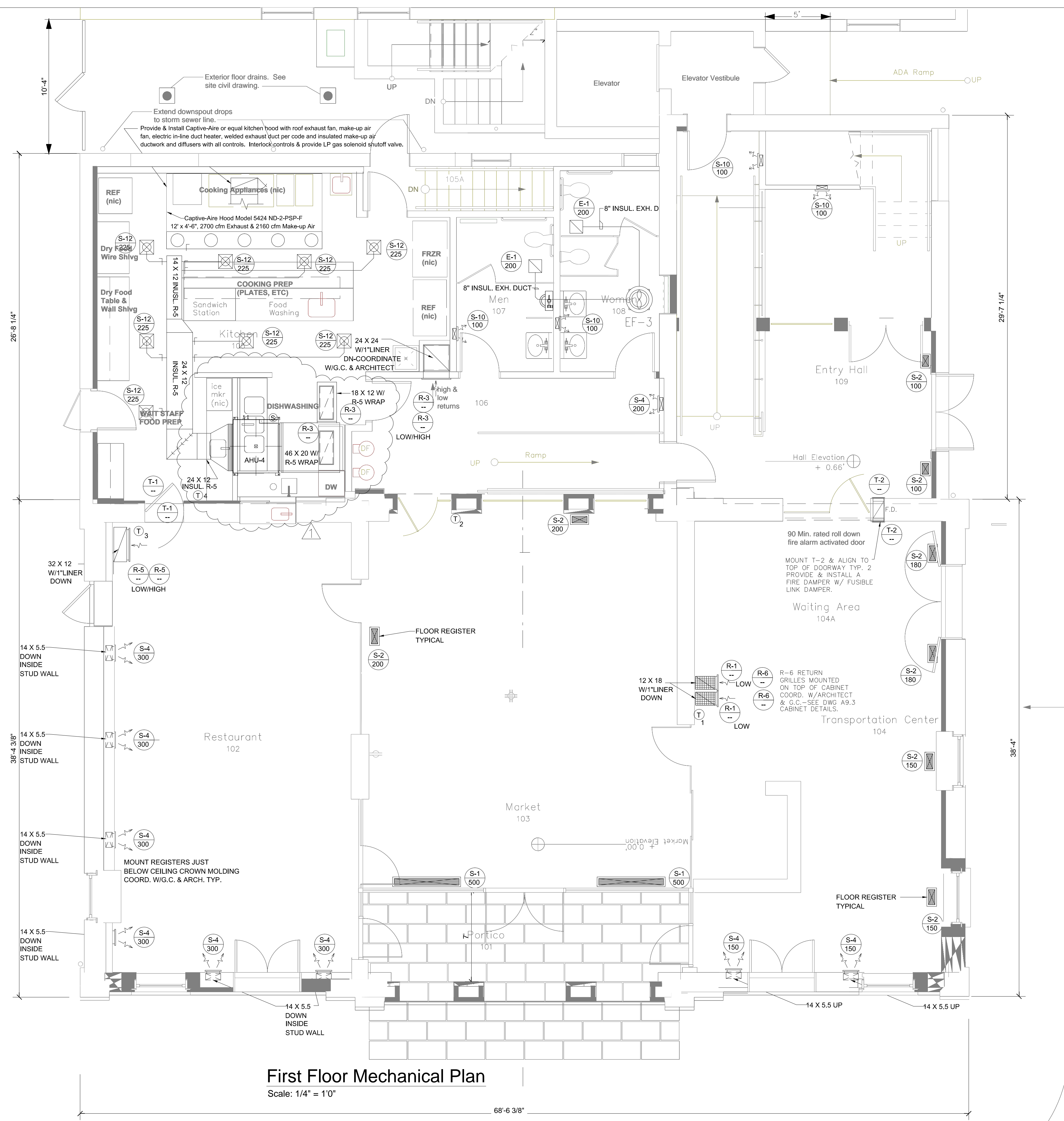
REVISD VRF MARCH 4, 2015

Drawing Title

**First Floor
Mechanical Plan**

Date 9/26/14
Scale 1/4"=1'0" Project Number 11105
Drawing Number

M2.2



First Floor Mechanical Plan

Scale: 1/4" = 1'0"

68'-6 3/8"

Neighboring Building
= 1'-0"

GEORGE STREET

Existing sidewalk entrance door to remain.