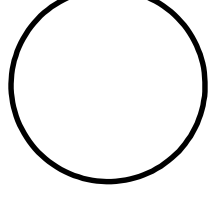


NORTH (magnetic)



Charles Washington Hall RENOVATIONS

Corner of George & Washington Streets
Charles Town, W.Va.

For the
City of Charles Town
City of Ranson

Planning & Engineering (pe/m)
Hall Planning & Engineering, Inc
316 Williams Street
Tallahassee, FL 32303

Planning & Architecture
Stromberg/Garrigan & Assoc., Inc.
102 E. Main Street - The Penn Bldg
Somerset, PA 15501

Structural Engineer
Robert Silman Associates
1053 31st Street NW
Washington D.C. 20007

Mech/Elect Engineer
Comfort Designs
620 Pennsylvania Avenue
Winchester, VA 22601

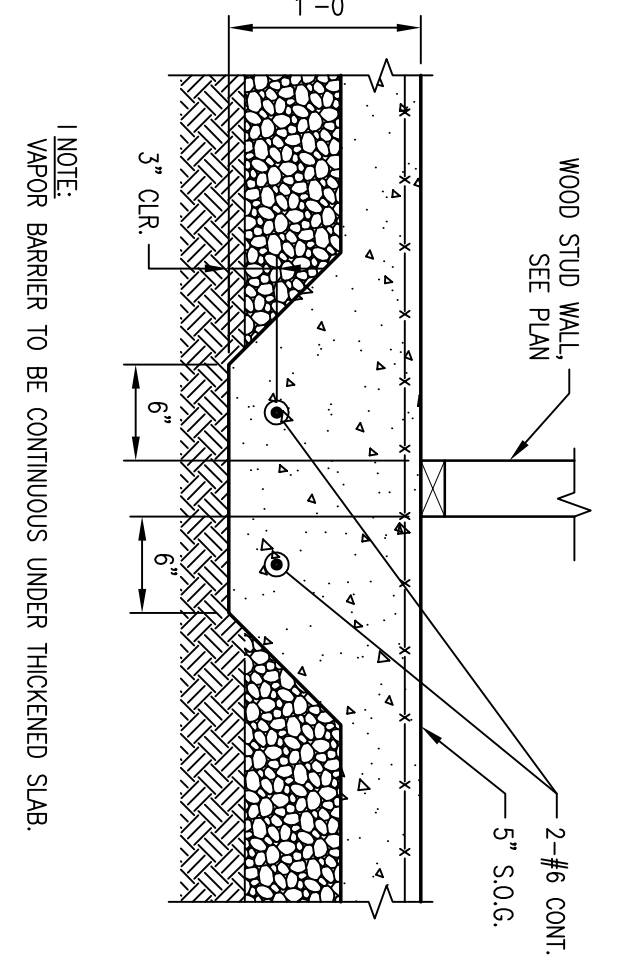
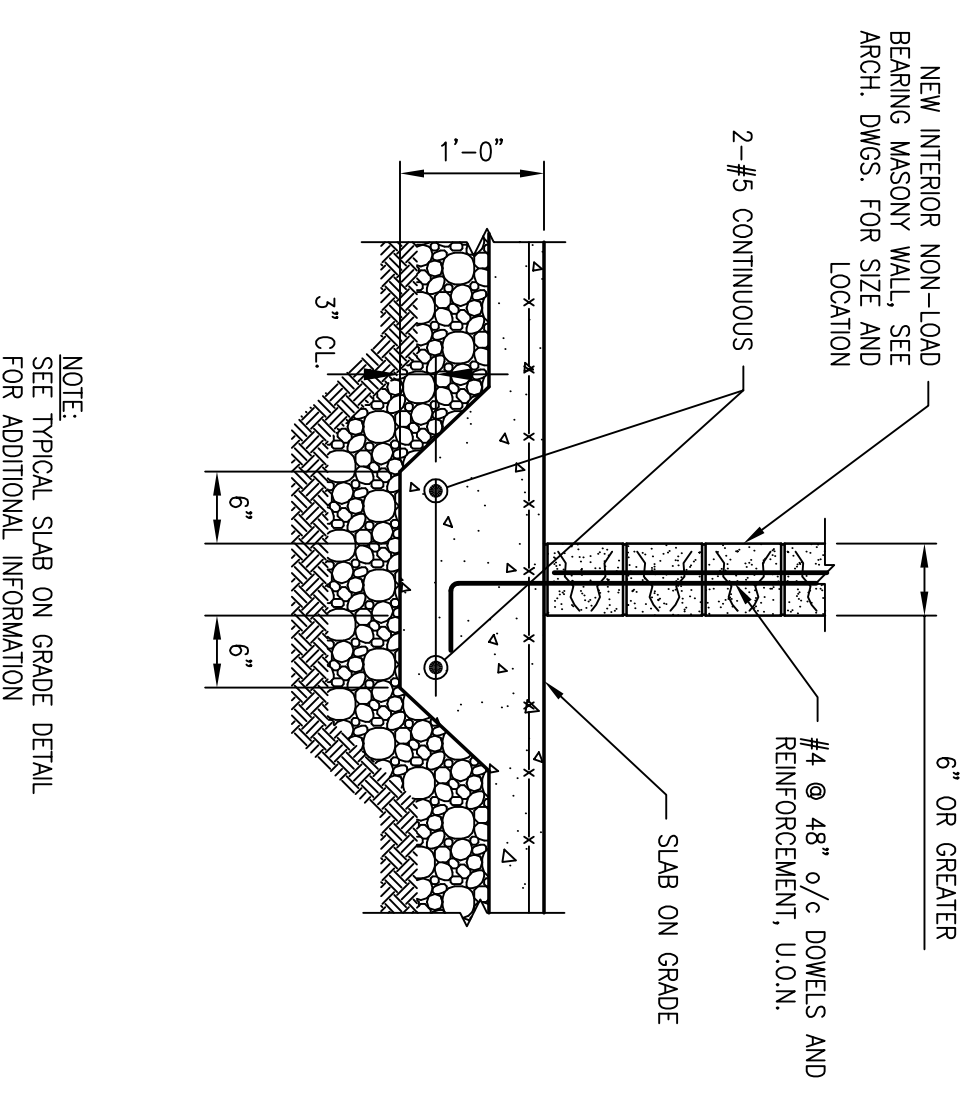
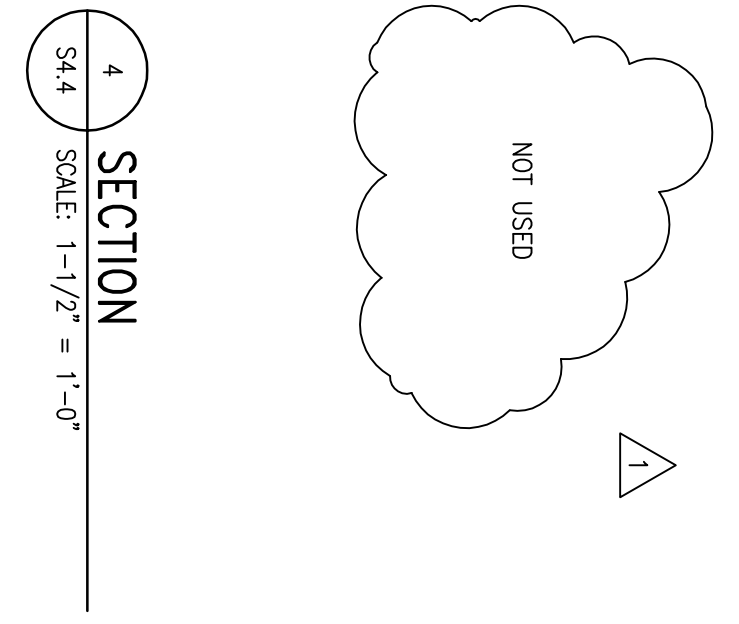
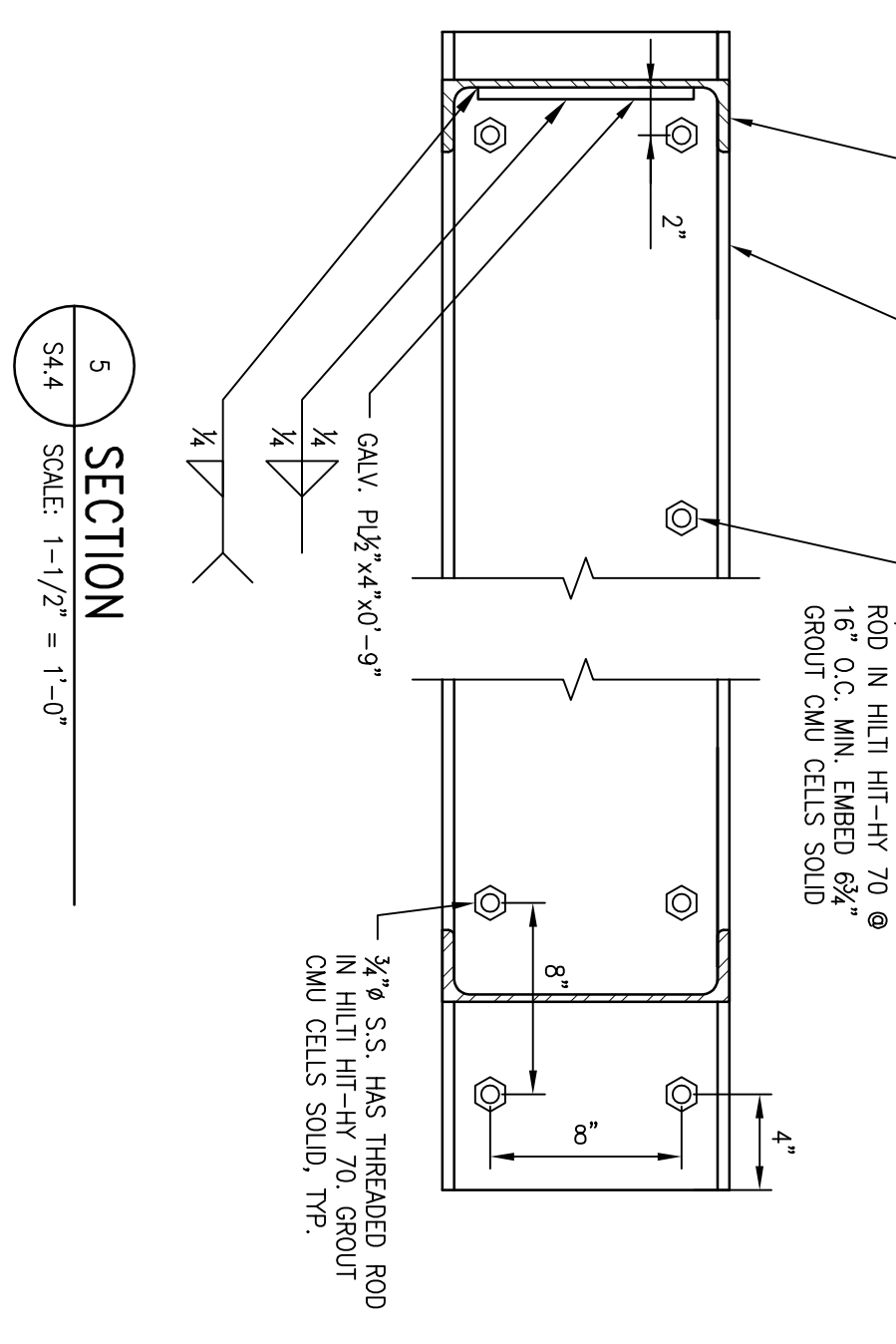
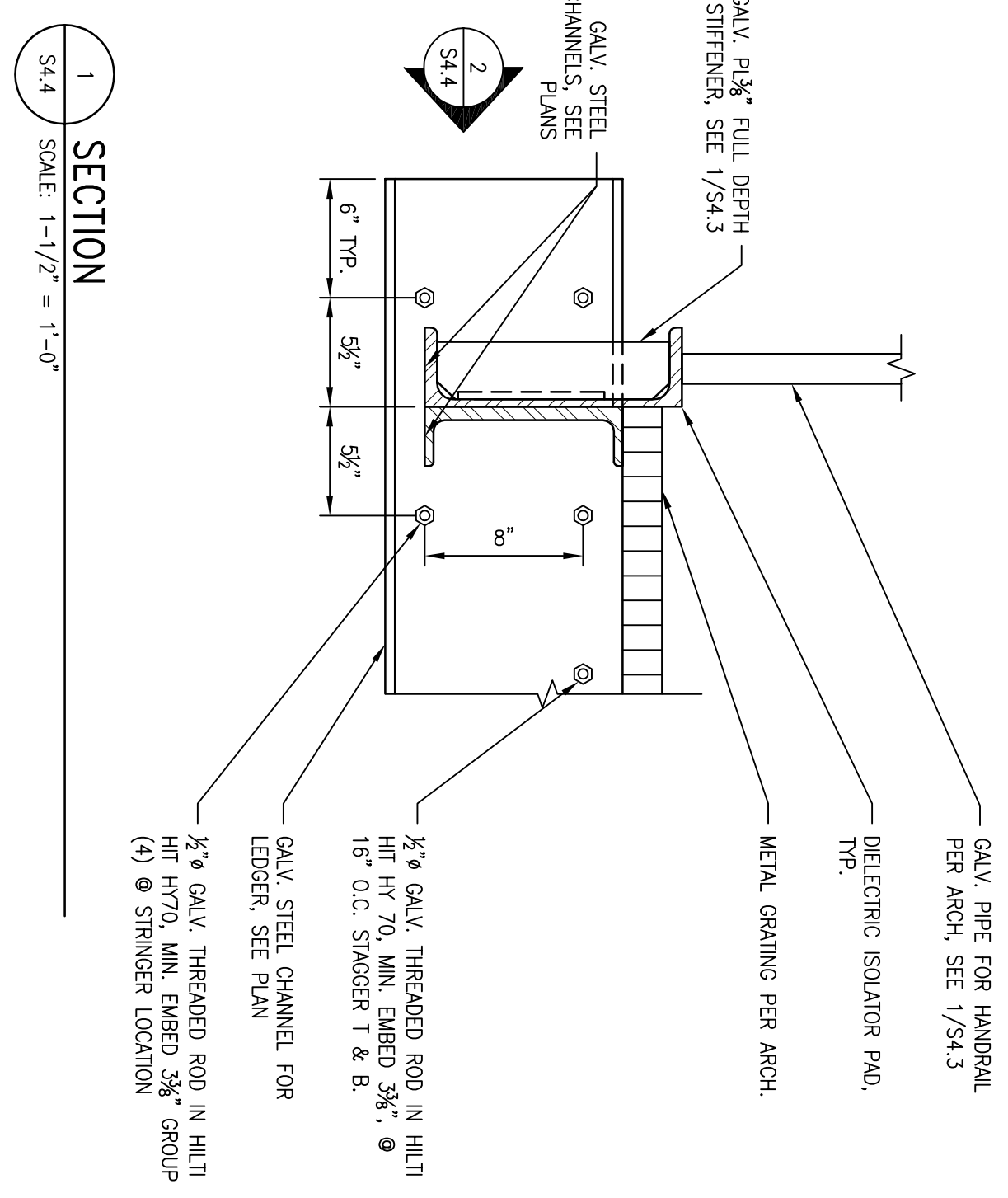
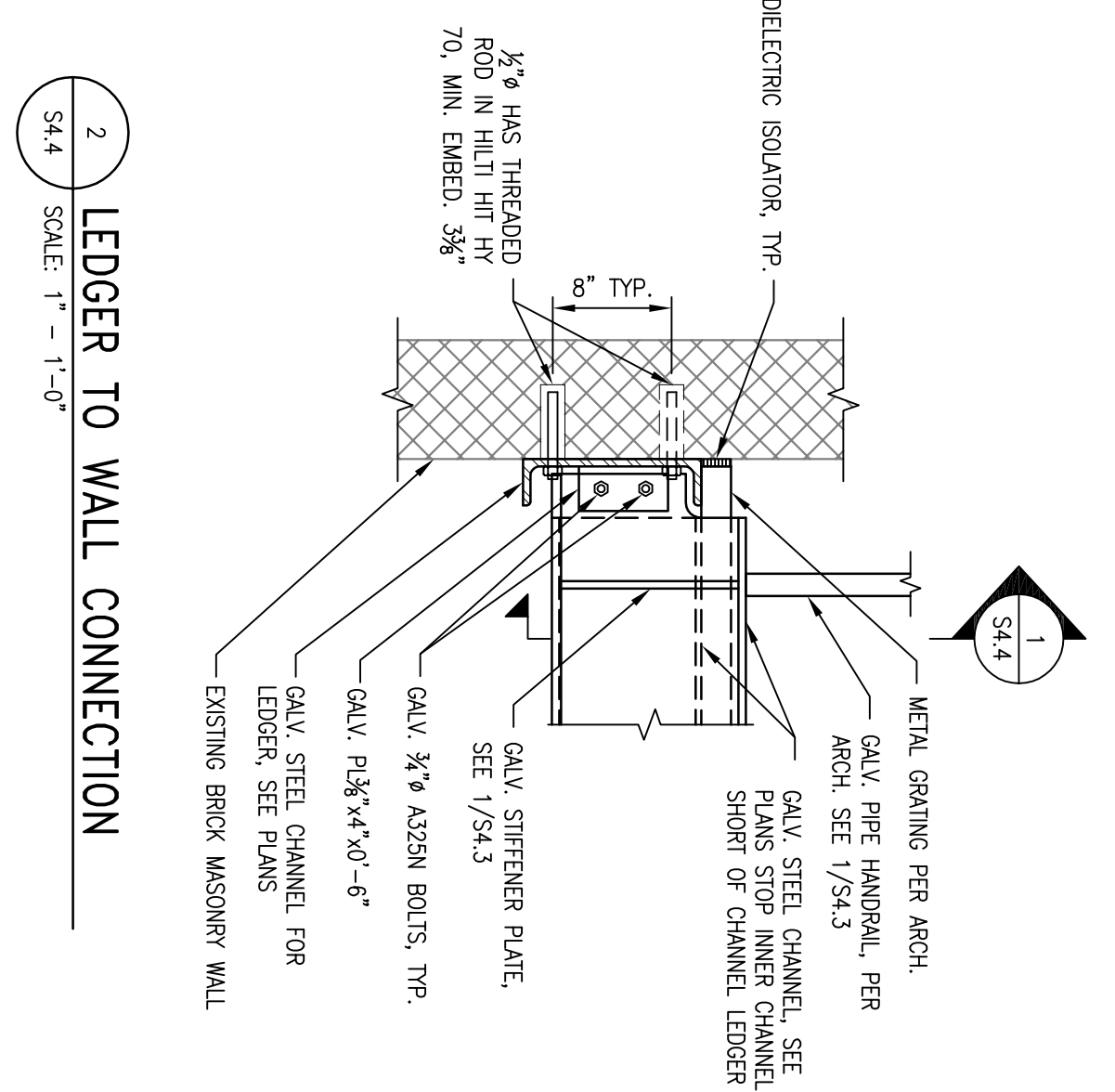
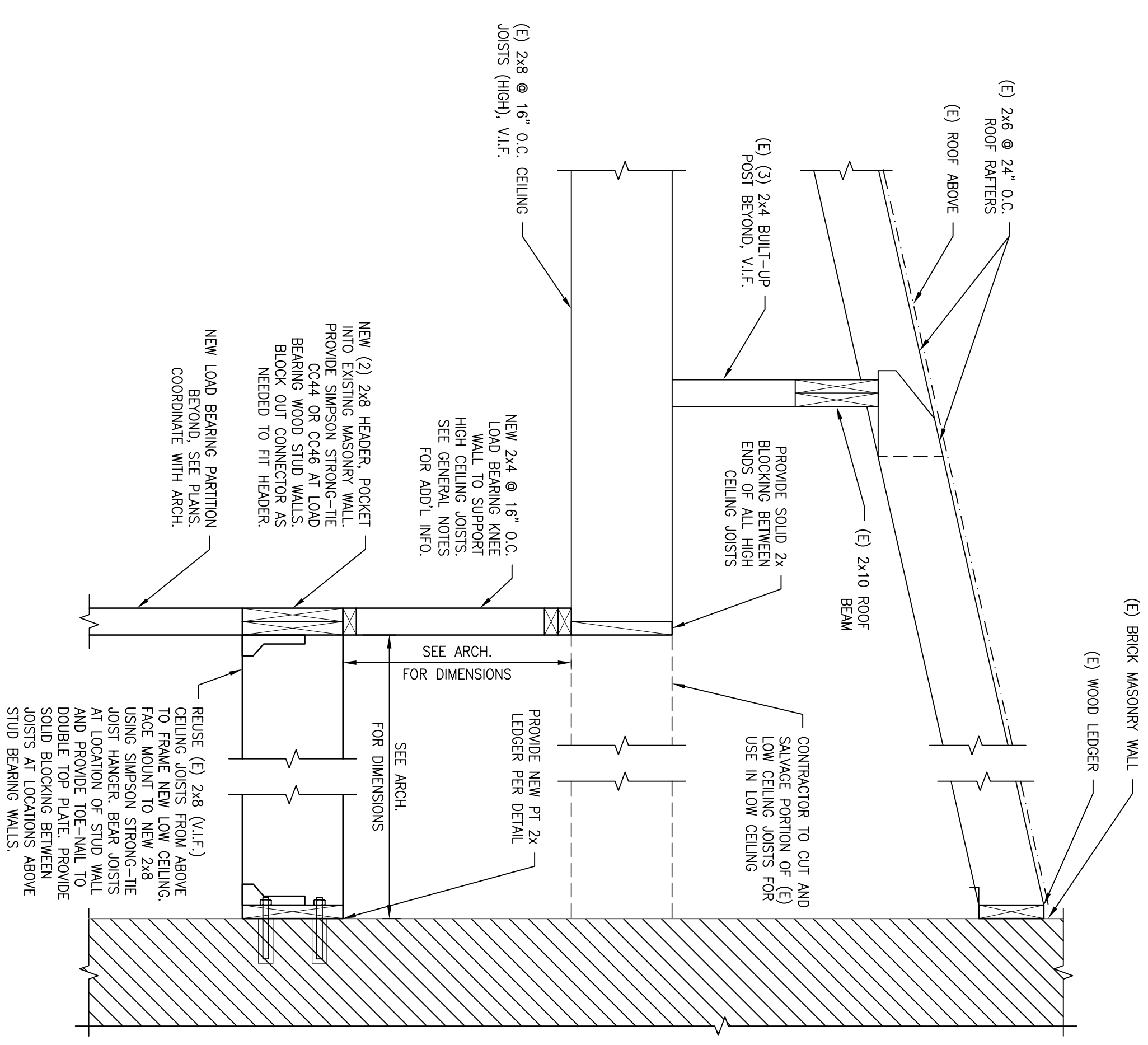
Architect
GROVE & DALL'OLIO ARCHITECTS P.L.L.C.
230 WEST KING • MARTINSBURG, WEST VIRGINIA • 25401

Issue/Revision	Seal
1 Bld Phase Revisions 03/04/2015	

DETAILS

09/26/2014 Project Number
Scale: _____
Drawing Number

S4.4



NOTE: VAPOR BARRIER TO BE CONTINUOUS UNDER THICKENED SLAB.

NOTE: SEE TYPICAL SLAB ON GRADE DETAIL FOR ADDITIONAL INFORMATION.