



L2M
811 Creamwell Park Drive, Suite 113
Crownsville Business Park at BVI
Glen Burnie, Maryland 21061
L2M@L2M.com
Phone 410.863.1302
Fax 410.863.1308

Architect / Engineer:

L2M
ARCHITECTS

I certify that these documents were prepared or approved by me, and that I am a duly licensed architect under the laws of the state of Maryland Lic. #039 Exp. 07 December 2015

Stamp:

Hagerstown Ward
Meetinghouse Addition
& Parking Expansion

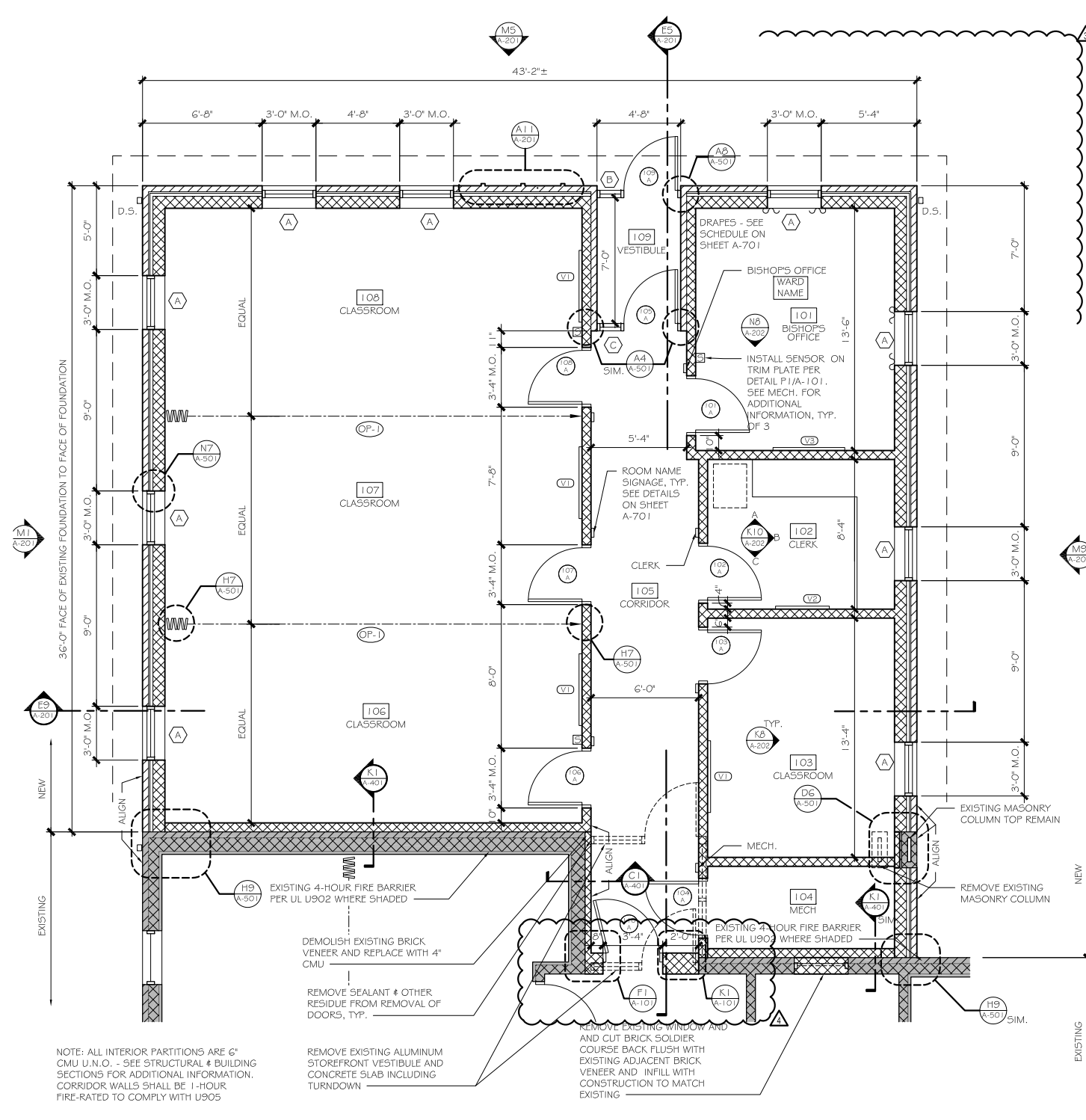
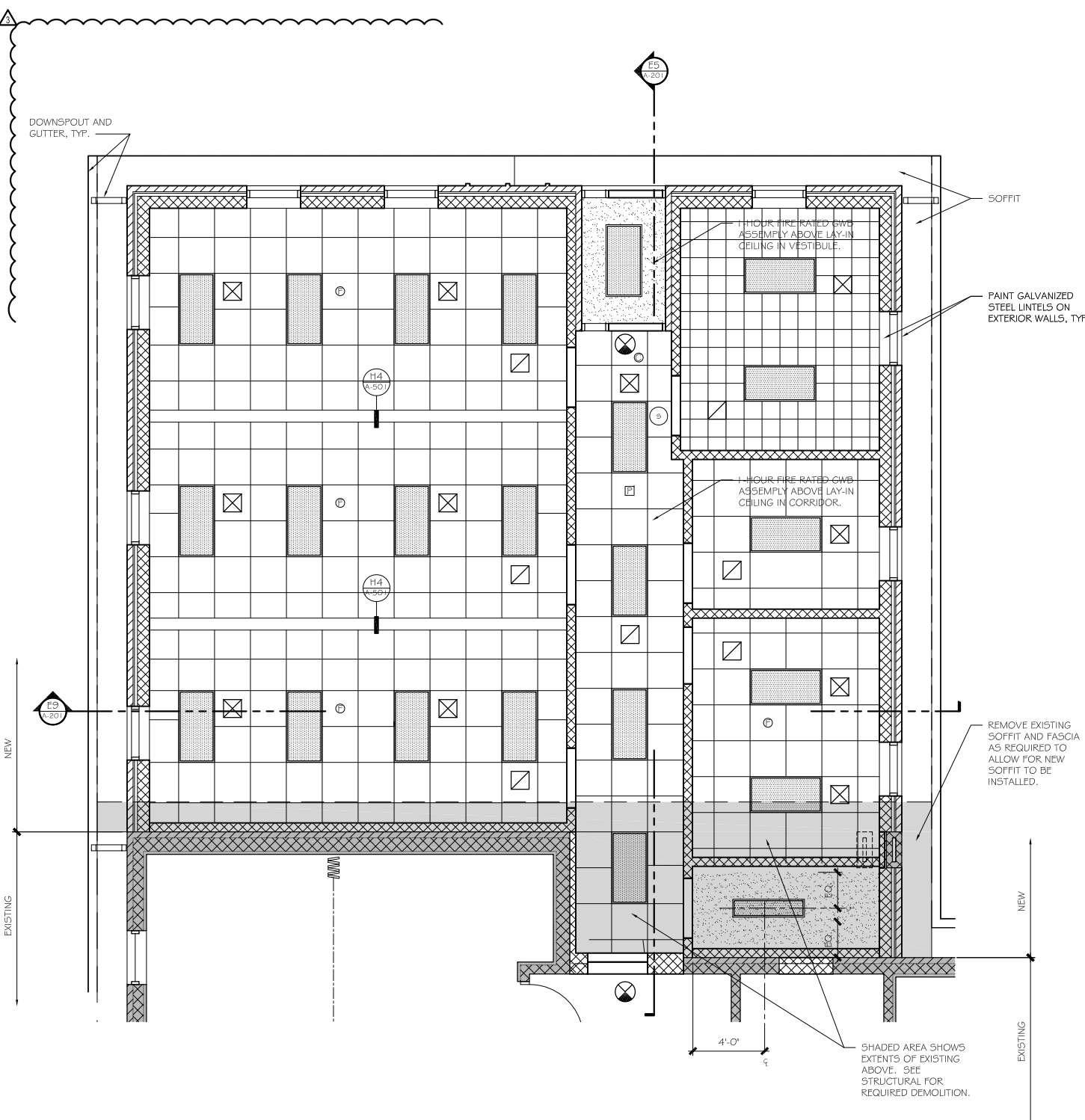
Project for:
THE CHURCH OF
JESUS CHRIST
OF LATTER-DAY SAINTS

Mark	Date (yy-mm-dd)	Description
24-AUG-15		ADDENDUM #3
17-AUG-15		ADDENDUM #2
13-MAR-15		COMMENT RESPONSE
30-SEP-14		BLOG PERMIT SUBMISSION
14-NOV-13		CLIENT DESIGN APPROVAL

Project Number:
13.162
Plan Series:
CUSTOM
Property Number:
514-7557

Sheet Title:
FLOOR
PLAN
& RCP

Sheet:
A-101



A4 REFLECTED CEILING PLAN
SCALE: 1/4" = 1'-0"

J4 FLOOR PLAN
SCALE: 1/4" = 1'-0"

GENERAL NOTE:
1. SEE SHEET A-701 FOR VISUAL DISPLAY BOARDS SHOWN AS (VD)

CEILING LEGEND	
	2x4 LIGHTING FIXTURE
	SPEAKER
	SUPPLY AIR
	RETURN AIR
	EXIT SIGN
	FIRE ALARM VISUAL ALARM SIGNAL, SEE ELECTRICAL
	FIRE ALARM COMBINATION AUDIO/VISUAL ALARM SIGNAL, SEE ELECTRICAL
	PHOTOELECTRIC SMOKE DETECTOR, SEE ELECTRICAL

