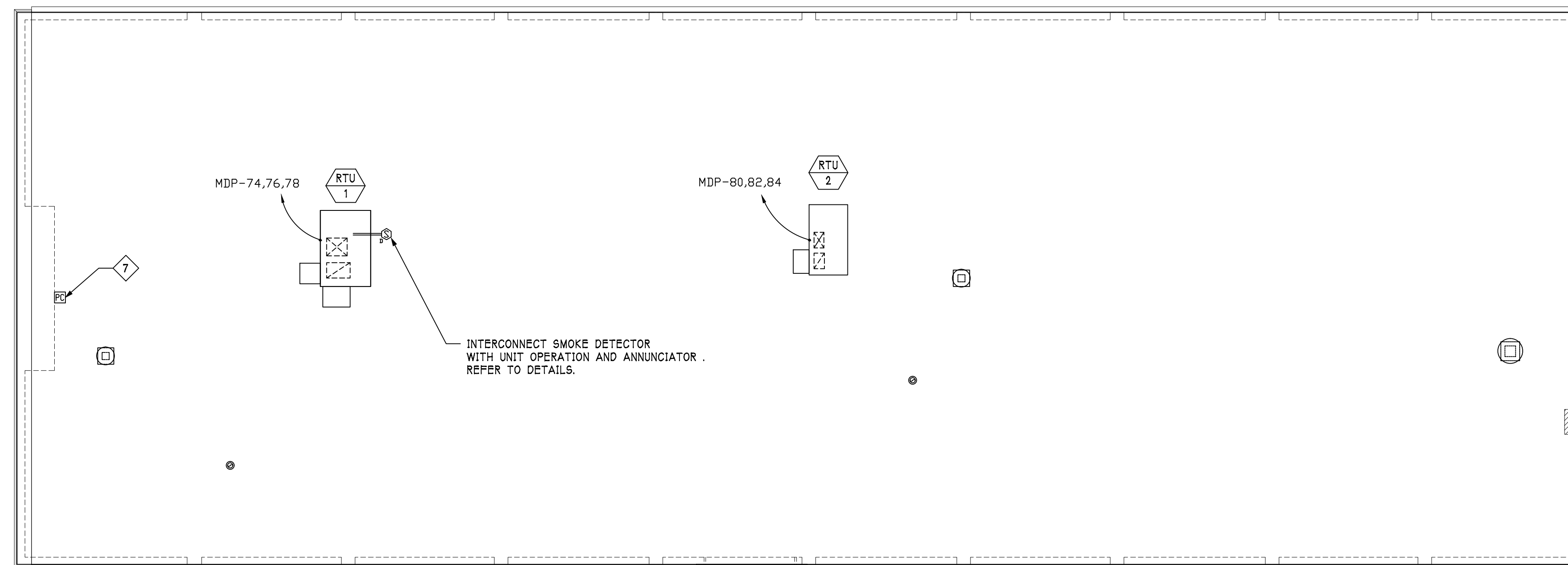
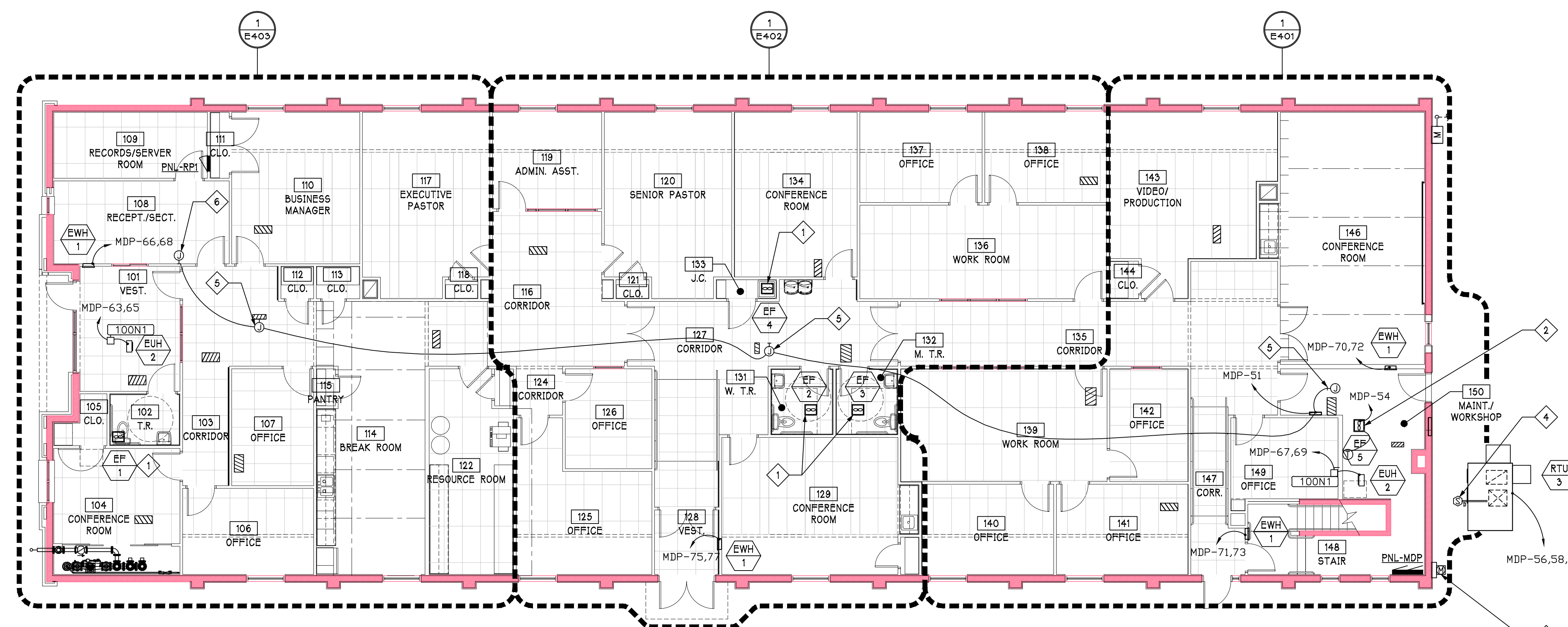


Revisions:	
No:	Date:
No:	Date:
No:	Date:
No:	Date:
No:	Date:



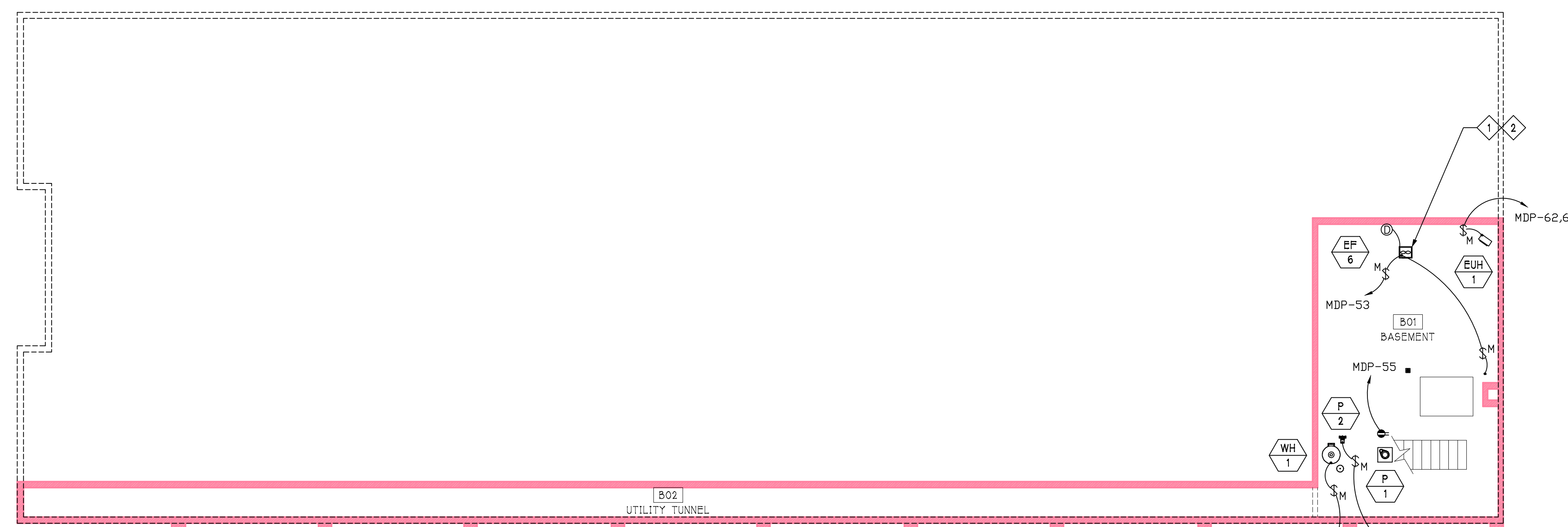
ROOF POWER PLAN

1/8" = 1'-0"



FIRST FLOOR POWER PLAN

1/8" = 1'-0"



BASEMENT POWER PLAN

1/8" = 1'-0"

FLOOR PLAN KEYED NOTES

- 1 CONNECT TO LIGHTING CIRCUIT FOR SPACE. REFER TO LIGHTING PLANS.
- 2 LINE VOLTAGE THERMOSTAT PROVIDED BY OTHERS AND INSTALLED BY ELECTRICAL TRADE. COORDINATE WITH MECHANICAL TRADES.
- 3 INSTALL NEW POWER POLE, METER BASE, AND CTS FOR NEW ELECTRICAL SERVICE. COORDINATE WITH LOCAL UTILITIES AND MECHANICAL TRADES.
- 4 INTERCONNECT SMOKE DETECTOR WITH MECHANICAL EQUIPMENT OPERATIONS AND CENTRAL MONITORING SYSTEM. REFER TO DETAILS.
- 5 INSTALL CONTROL TRANSFORMER PROVIDED BY MECHANICAL TRADES AND PREPARE LOCATION FOR LOW VOLTAGE CONNECTIONS BY MECHANICAL TRADES.
- 6 LOCATION OF STAND ALONE DUCT SMOKE DETECTOR SYSTEM. REFER TO DETAILS.
- 7 EXTERIOR SITE LIGHTING PHOTOCELL CONTROL. INSTALL PER MANUFACTURERS INSTRUCTIONS.

BASEMENT KEYED NOTES

- 1 LINE VOLTAGE THERMOSTAT PROVIDED BY OTHERS AND INSTALLED BY ELECTRICAL TRADE. COORDINATE WITH MECHANICAL TRADES.
- 2 CONNECT MOTOR OPERATED DAMPER TO EXHAUST FAN TO OPEN DAMPER WHEN FAN IS ON.

NEWCOMER ASSOCIATES
 architecture + engineering
1105 Shiller Avenue Chambersburg, PA 17201 Tel: 717.265.0101 Fax: 717.263.7580 www.newcomerassociates.com

King Street Church Office Building Renovation
56 North Second Street Chambersburg, Pennsylvania 17201

© 2015 Newcomer Associates, Inc.

Drawing Title:
POWER PLANS

Sheet No.

E201

Date: January 29, 2016

