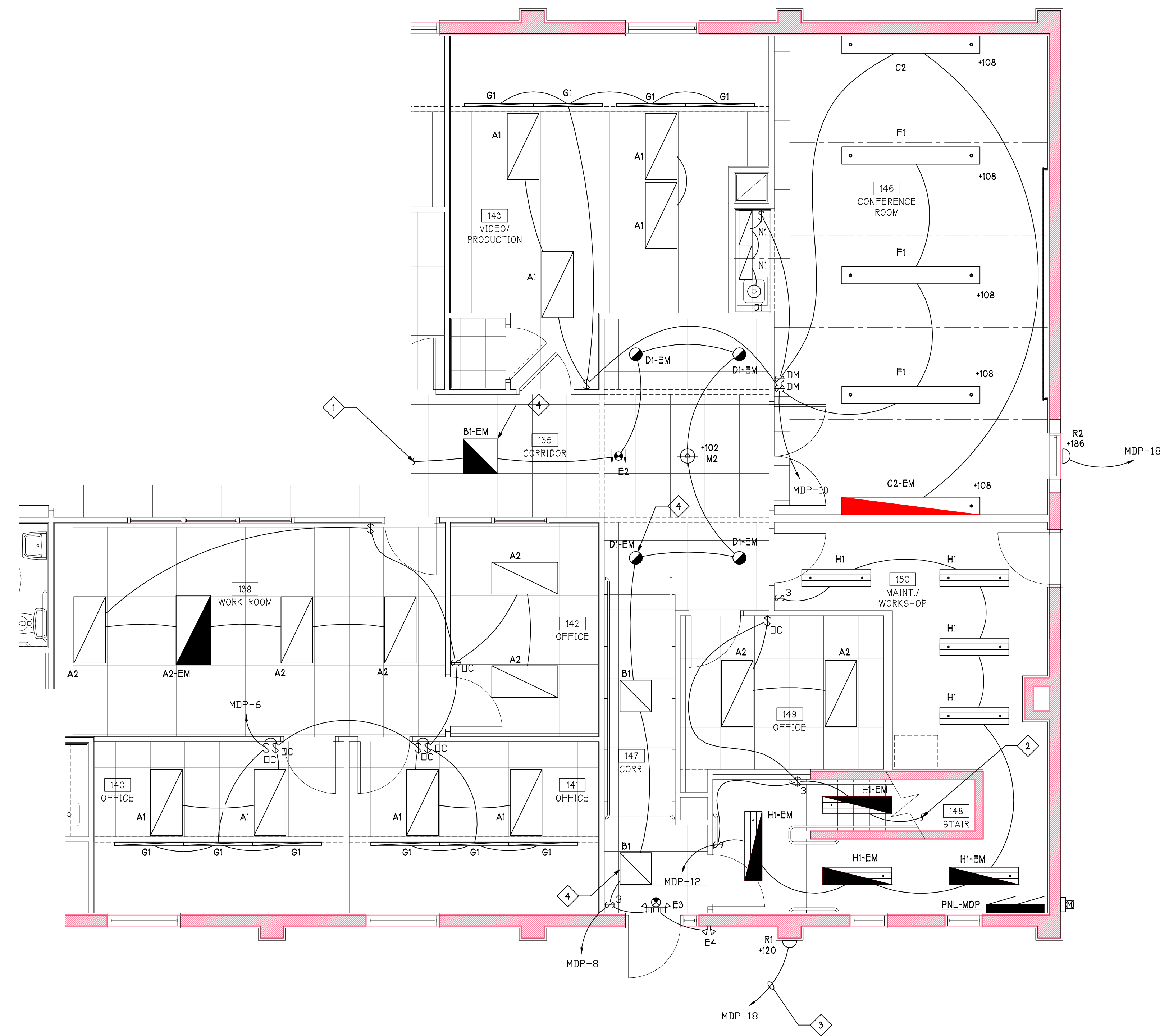


SHEET KEYED NOTES	
1	REFER TO ADDITIONAL PLANS FOR CONTINUATION.
2	CONNECT TO 3-WAY SWITCH AT BOTTOM OF STAIRS. REFER TO ADDITIONAL PLANS.
3	ROUTE NOTED CIRCUIT THROUGH PHOTOCELL ON ROOF. REFER TO ADDITIONAL PLANS.
4	CONNECT NOTED LIGHT DIRECTLY TO UNSWITCHED POWER LEG FOR NIGHT LIGHT.

Revisions:	
No:	Date:
No:	Date:
No:	Date:
No:	Date:
No:	Date:



1 ENLARGED LIGHTING PLAN
 1/4" = 1'-0"

NEWCOMER ASSOCIATES
 architecture + engineering
 1105 Shiller Avenue Chambersburg, PA 17201 Tel: 717.265.0100 Fax: 717.263.7380 www.newcomerassociates.com

**King Street Church
 Office Building Renovation**
 56 North Second Street Chambersburg, Pennsylvania 17201

© 2015 Newcomer Associates, Inc.

Drawing Title:
 ENLARGED LIGHTING PLAN

Sheet No.
E301
 Date: January 29, 2016