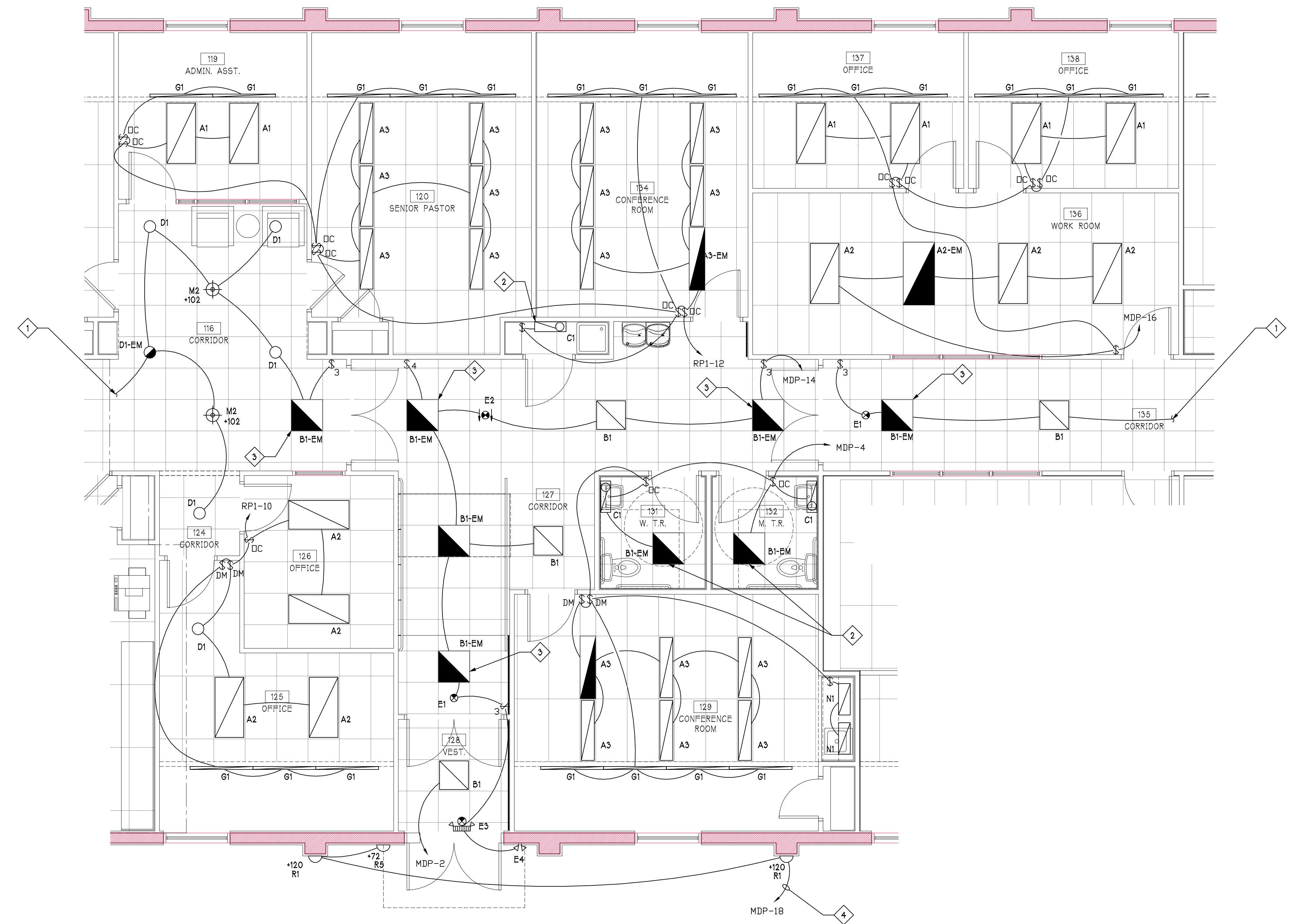


SHEET KEYED NOTES	
1	REFER TO ADDITIONAL PLANS FOR CONTINUATION.
2	CONNECT LIGHTING CIRCUIT TO EXHAUST FAN. COORDINATE WORK WITH MECHANICAL TRADES.
3	CONNECT NOTED LIGHT DIRECTLY TO UN-SWITCHED POWER LEG FOR NIGHT LIGHT.
4	ROUTE NOTED CIRCUIT THROUGH PHOTOCELL MOUNTED ON ROOF. REFER TO ADDITIONAL PLANS.

Revisions:	
No:	Date:
No:	Date:
No:	Date:
No:	Date:
No:	Date:



**NEWCOMER ASSOCIATES**  
 architecture + engineering

1105 Shiller Avenue - Chambersburg, PA 17201 Tel: 717.265.0100 Fax: 717.263.7580 www.newcomerassociates.com

**King Street Church  
 Office Building Renovation**

56 North Second Street Chambersburg, Pennsylvania 17201

© 2015 Newcomer Associates, Inc.

**Drawing Title:**  
 ENLARGED LIGHTING PLAN

**Sheet No.**  
**E302**  
 Date: January 29, 2016

1  
 ENLARGED LIGHTING PLAN  
 1/4" = 1'-0"