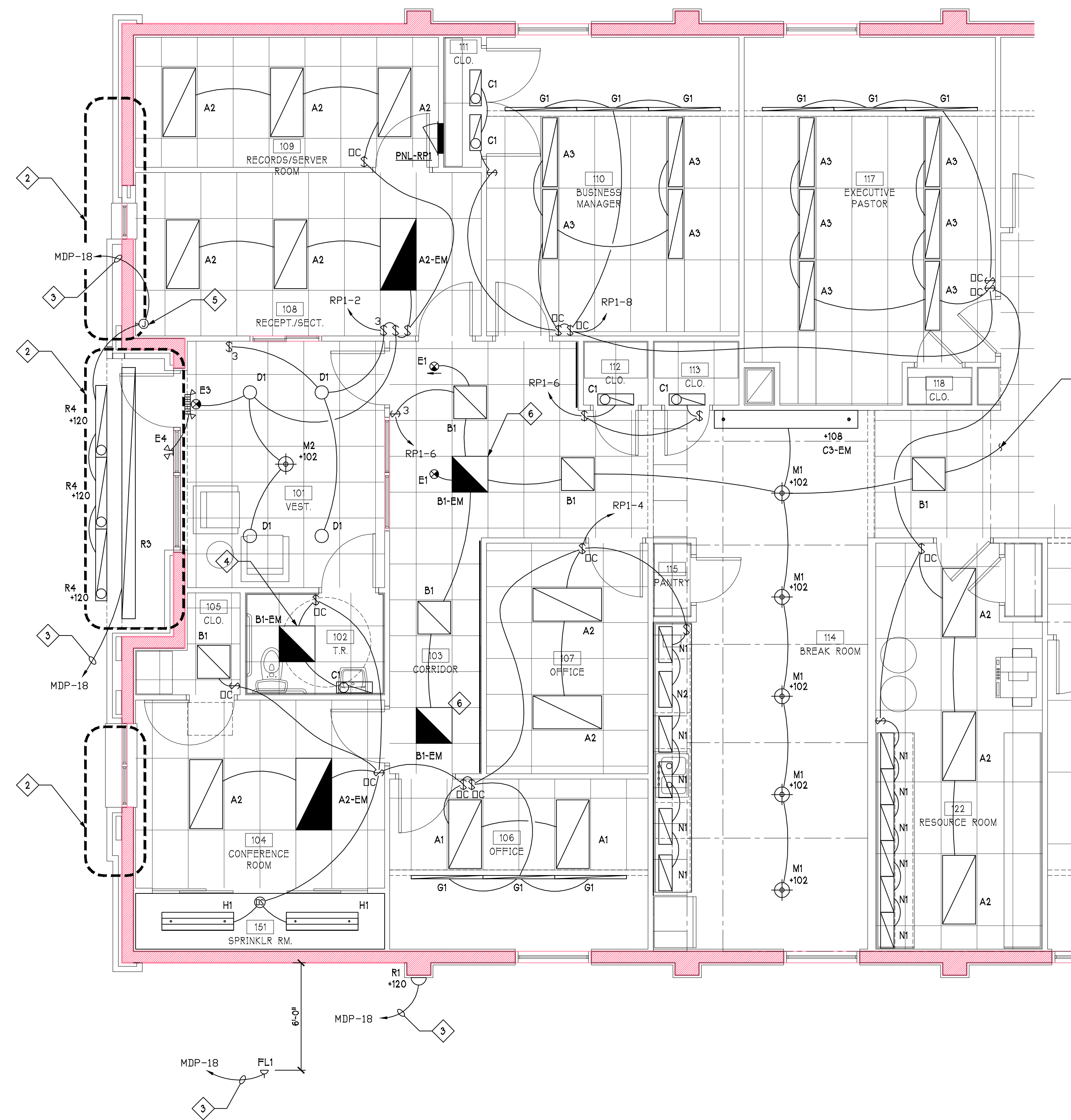


SHEET KEYED NOTES

- 1 REFER TO ADDITIONAL PLANS FOR CONTINUATION.
- 2 REMOVE EXISTING RECESSED LIGHTING AND CONDUCTORS BACK TO NEAREST ACCESSIBLE LOCATION.
- 3 INSTALL LINE VOLTAGE PHOTOCELL ON ROOF PER MANUFACTURERS INSTRUCTIONS AND ROUTE NOTED CIRCUIT THROUGH TO CONTROL LIGHT.
- 4 CONNECT LIGHTING CIRCUIT TO EXHAUST FAN. COORDINATE WORK WITH MECHANICAL TRADES.
- 5 ROUTE NOTED CIRCUIT WITH JUNCTION BOX WITH COVER LOCATED ABOVE CEILING FOR INSTALLATION OF FUTURE DIMMER.
- 6 CONNECT NOTED LIGHT DIRECTLY TO UNSWITCHED POWER LEG FOR NIGHT LIGHT.

Revisions:

No:	Date:



NEWCOMER ASSOCIATES
 architecture + engineering

1105 Shiller Avenue - Chambersburg, PA 17201 Tel: 717.265.0101 Fax: 717.263.7580 www.newcomerassociates.com

**King Street Church
 Office Building Renovation**

56 North Second Street Chambersburg, Pennsylvania 17201

© 2015
 Newcomer Associates, Inc.

Drawing Title:
 ENLARGED
 LIGHTING PLAN

Sheet No.
E303
 Date: January 29, 2016

1 ENLARGED LIGHTING PLAN
 1/4" = 1'-0"