

SHEET KEYED NOTES

- 1 MAKE FINAL CONNECTION TO GARBAGE DISPOSAL PROVIDED BY OTHERS.
- 2 MAKE FINAL CONNECTION TO UNDER COUNTER DISHWASHER. PROVIDE CORD AND PLUG TO DISHWASHER AS NECESSARY.
- 3 INCLUDE POWER TO ELECTRICALLY OPERATED DOOR STRIKE. COORDINATE INSTALLATION OF LOW VOLTAGE CABLING, TRANSFORMER AND CONTROLS WITH GENERAL TRADES.

Revisions:

No: Date:

No: Date:

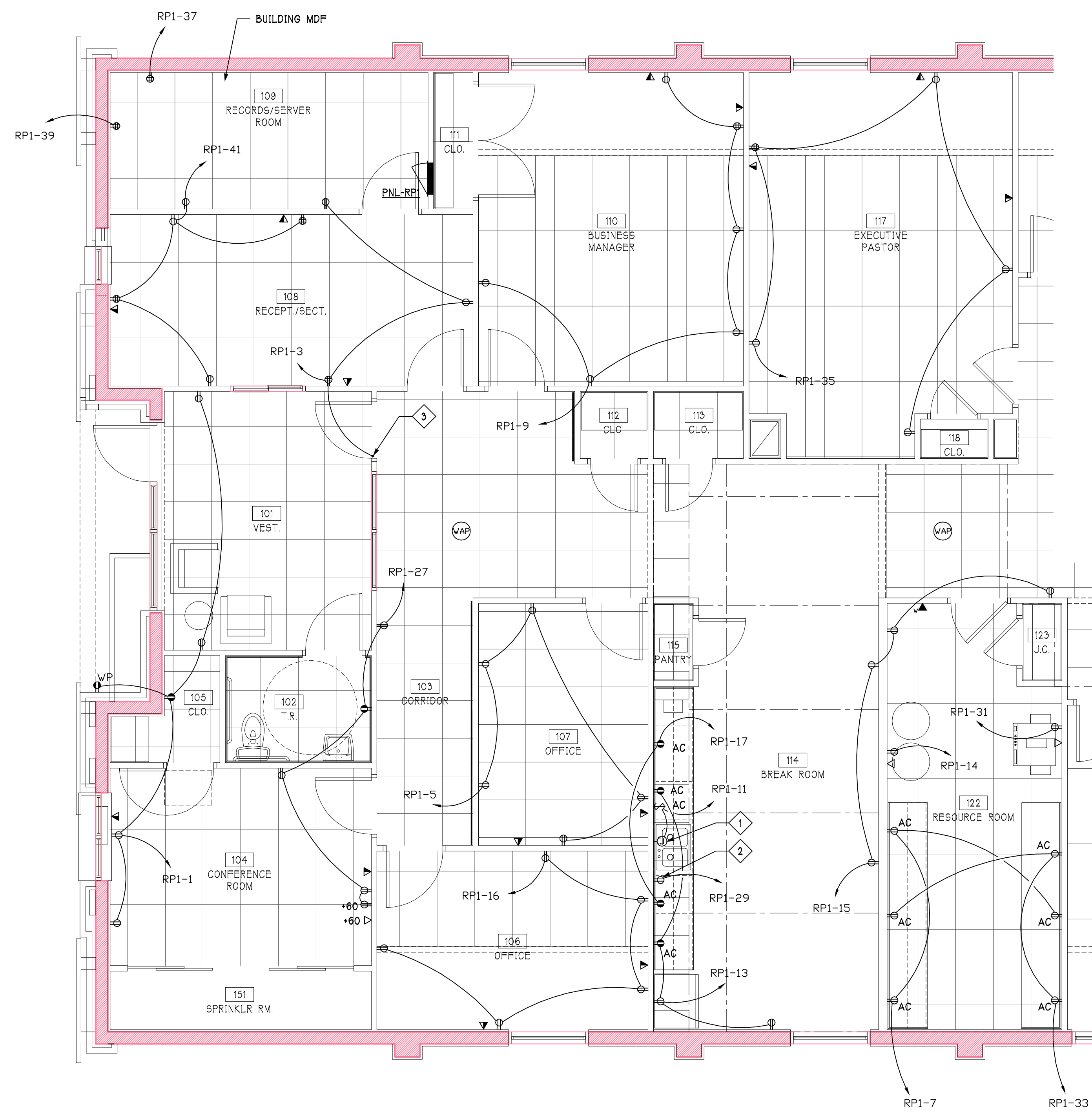
No: Date:

No: Date:

No: Date:

No: Date:

No: Date:



NEWCOMER ASSOCIATES
 architecture + engineering

1105 Shiller Avenue - Chambersburg, PA 17201 Tel: 717.265.0100 Fax: 717.263.7580 www.newcomerassociates.com

**King Street Church
 Office Building Renovation**

56 North Second Street Chambersburg, Pennsylvania 17201

© 2015
 Newcomer Associates, Inc.

Drawing Title:
 ENLARGED
 POWER PLAN

Sheet No.
E403
Date: January 29, 2016

1 ENLARGED POWER PLAN
 E4-03 1/4" = 1'-0"