

Revisions:

No.	Date:

Revisions:

No.	Date:

NEWCOMER ASSOCIATES
 architecture + engineering

1105 Shiller Avenue • Chambersburg, PA 17201 • Tel: 717.265.0100 • Fax: 717.263.7580 • www.newcomerassociates.com

**King Street Church
 Office Building Renovation**

56 North Second Street • Chambersburg, Pennsylvania 17201

© 2015 Newcomer Associates, Inc.

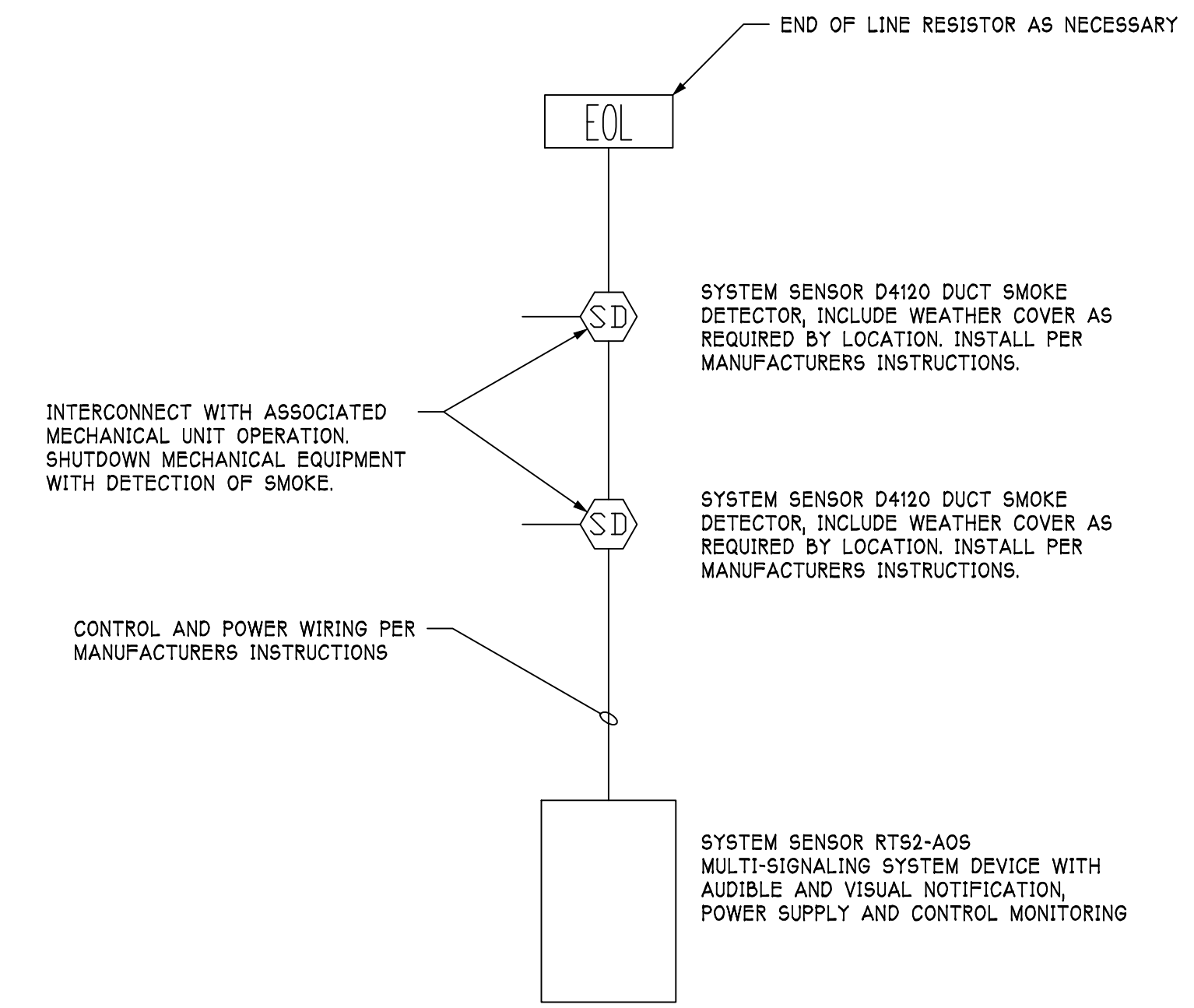
Drawing Title:
 LUMINAIRE SCHEDULES AND DETAILS

Sheet No. **E501**

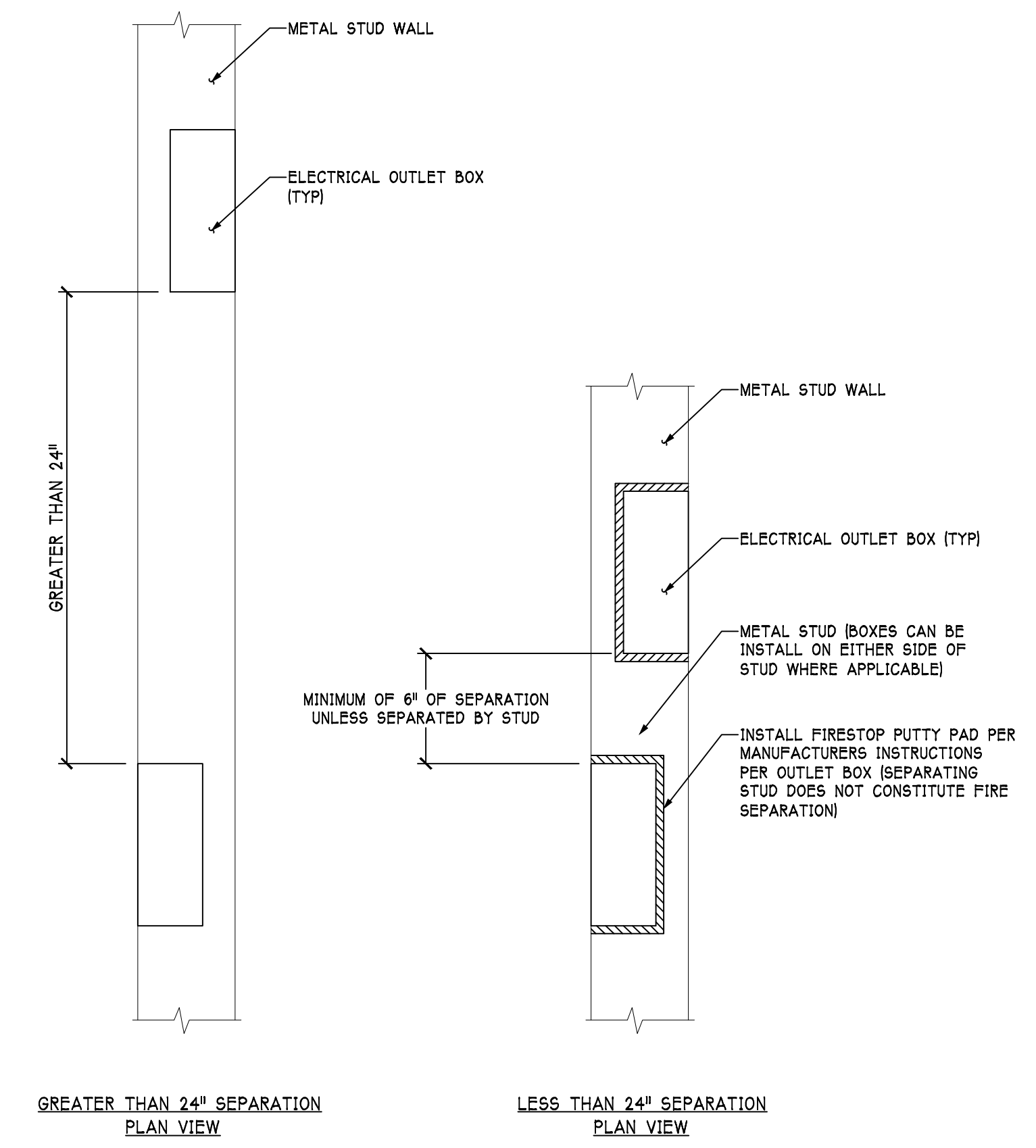
Date: January 29, 2016

LUMINAIRE SCHEDULE

TAG	DESCRIPTION	MANUFACTURER	MODEL NUMBER	LAMP DATA				BALLAST TYPE	VOLTAGE	MOUNTING TYPE	NOTES	
				EMERG PACK	QTY	LAMP TYPE	COLOR TEMP.					WATTAGE
A1	2X4 TROFFER LIGHT WITH WHITE FINISH	LITHONIA	2GT8-2-32-A12-120-GEB10IS		2	T8 LINEAR	3000	32.0	ELECTRONIC	120	RECESSED	-
A2	2X4 TROFFER LIGHT WITH WHITE FINISH	LITHONIA	2GT8-3-32-A12-120-GEB10IS		3	T8 LINEAR	3000	32.0	ELECTRONIC	120	RECESSED	-
A2-EM	2X4 TROFFER LIGHT WITH WHITE FINISH	LITHONIA	2GT8-3-32-A12-120-GEB10IS	●	3	T8 LINEAR	3000	32.0	ELECTRONIC	120	RECESSED	-
A3	1X4 TROFFER LIGHT WITH WHITE FINISH	LITHONIA	GT8-1-32-A12-120-GEB10IS		1	T8 LINEAR	3000	32.0	ELECTRONIC	120	RECESSED	-
A3-EM	1X4 TROFFER LIGHT WITH WHITE FINISH	LITHONIA	GT8-1-32-A12-120-GEB10IS	●	1	T8 LINEAR	3000	32.0	ELECTRONIC	120	RECESSED	-
B1	2X2 TROFFER LIGHT WITH WHITE FINISH	LITHONIA	2GT8-2-17-A12-120-GEB10IS		2	T8 LINEAR	3000	17.0	ELECTRONIC	120	RECESSED	-
B1-EM	2X2 TROFFER LIGHT WITH WHITE FINISH	LITHONIA	2GT8-2-17-A12-120-GEB10IS	●	2	T8 LINEAR	3000	17.0	ELECTRONIC	120	RECESSED	-
C1	2' LONG VANITY LIGHT WITH WHITE FINISH AND SHADE	LITHONIA	11928-RE-120-GEB10IS-WH		2	T8 LINEAR	3000	17.0	ELECTRONIC	120	SURFACE	-
C2	8' LONG LIGHT WITH WHITE FINISH	PEERLESS	BRW4-1-32-WHR-ODPWPB-8-R8-120-ADZT-SCT-C110		1	T8 LINEAR	3000	32.0	DIMMING	120	WALL	-
C2-EM	8' LONG LIGHT WITH WHITE FINISH	PEERLESS	BRW4-1-32-WHR-ODPWPB-8-R8-120-ADZT-SCT-C110	●	1	T8 LINEAR	3000	32.0	DIMMING	120	WALL	-
C3-EM	8' LONG LIGHT WITH WHITE FINISH	PEERLESS	BRW1-1-32-WHR-8-R8-120-AD-2SE-EL-SCT-C210	●	1	T8 LINEAR	3000	32.0	DIMMING	120	WALL	-
D1	6" DIA DOWN LIGHT WITH WHITE FINISH	LITHONIA	6BPMW-HLED-30K-90CRI-L7LEDT24		1	LED	3000	17.0	ELECTRONIC	120	RECESSED	-
D1-EM	6" DIA DOWN LIGHT WITH WHITE FINISH	LITHONIA	6BPMW-HLED-30K-90CRI-L7LEDT24	●	1	LED	3000	17.0	ELECTRONIC	120	RECESSED	-
E1	SINGLE FACED EDGE LIT EXIT SIGN WITH INTEGRAL BATTERY AND BRUSHED ALUMINUM FINISH	LITHONIA	EDGR-1-R-EL		1	LED	3000	5.0	ELECTRONIC	120	RECESSED	-
E2	DOUBLE FACED EDGE LIT EXIT SIGN WITH INTEGRAL BATTERY AND BRUSHED ALUMINUM FINISH	LITHONIA	EDGR-2-RMR-EL		1	LED	3000	5.0	ELECTRONIC	120	RECESSED	-
E3	COMBINATION EXIT SIGN WITH EGRESS LIGHTS WITH WHITE FINISH	LITHONIA	LHQM-LED-R-HO		2	LED	3000	1.5	ELECTRONIC	120	SURFACE	HIGH OUTPUT BATTERY
E4	TWIN HEAD EGRESS LIGHT RATED FOR WET LOCATIONS	LITHONIA	ELA-T-QWP-L0309		2	LED	3000	1.5	ELECTRONIC	9.6	WALL	-
F1	8' LONG PENDENT LIGHT WITH WHITE FINISH AND CABLE HANGERS	PEERLESS	BRM4-2-54TSHO-SPR-20/80-OPD-SSB-8FT -R8-120-ADEZ-SCT-LP830-FZ/XX-C210		4	T5 LINEAR	3000	54.0	DIMMING	120	PENDENT	-
FL1	6X4 OPTIC FLOOD LIGHT WITH DARK BRONZE FINISH AND MOUNTING HARDWARE	LITHONIA	DSXF1LED-1-A530/30K-HMF-120-IS-DBXD		1	LED	3000	19.0	ELECTRONIC	120	GROUND	-
G1	4' LONG ADJUSTABLE LINEAR LIGHT WITH ANODIZED ALUMINUM FINISH	WINONA	WSL208-LSL-4-MSL4-200ADJ-100DEC-30K-24-20082BA-NAA		1	LED	3000	25.0	ELECTRONIC	120	SURFACE	-
H1	4' LONG CHAIN HUNG STRIP LIGHT WITH WHITE FINISH	LITHONIA	LA-2-32-MVOLT-GEB10IS		2	T8 LINEAR	3000	32.0	ELECTRONIC	120	PENDENT	-
H1-EM	4' LONG CHAIN HUNG STRIP LIGHT WITH WHITE FINISH	LITHONIA	LA-2-32-MVOLT-GEB10IS	●	2	T8 LINEAR	3000	32.0	ELECTRONIC	120	PENDENT	-
M1	16" DIA BELL LIGHT WITH ACRYLIC SHADE AND MINI TEXTURE SILVER FINISH	SPECTRUM	PRX16LEDGV-37W-30K-DO101-CD-PR16-1MR-MT		1	LED	3000	37.0	DIMMING	120	PENDENT	-
M2	16" DIA BELL LIGHT WITH ACRYLIC SHADE AND MINI TEXTURE SILVER FINISH	SPECTRUM	PRX16LEDGV-14W-30K-DO101-CD-PR16-1MR-MT		1	LED	3000	14.0	DIMMING	120	PENDENT	-
N1	2' LONG UNDER CABINET LIGHT INCLUDE INTERCONNECTING WIRING AND DRIVER	LITHONIA	RAZ24		8	LED	3000	2.0	ELECTRONIC	120	SURFACE	-
N2	18" LONG UNDER CABINET LIGHT INCLUDE INTERCONNECTING WIRING AND DRIVER	LITHONIA	RAZ24		8	LED	3000	2.0	ELECTRONIC	120	SURFACE	-
R1	TRAPZOIDAL AREA LIGHT WITH TYPE 4 OPTICS AND DARK BRONZE FINISH	LITHONIA	WSTLED-2-10A700/40K-SR4-MVOLT-DBXD		1	LED	3000	47.0	ELECTRONIC	120	WALL	-
R2	SECURITY LIGHT WITH POLYCARBONATE LENS AND DARK BRONZE FINISH	LITHONIA	TWHLED-30C-1000-40K-T3M-MVOLT-DBXD		1	LED	3000	104.0	ELECTRONIC	120	WALL	-
R3	RECESSED LINEAR LIGHT WITH TEMPERED GLASS LENS AND CUSTOM FINISH	LUMENWERX	VIAWETR-TMG-LED-80-750-30-14-120-D-1-EF-OHC-CF#		1	LED	3000	120.0	DIMMING	120	RECESSED	-
R4	4' LONG SIGN LIGHT WITH WALL WASH OPTICS AND ADJUSTABLE 6" LONG MOUNTING ARMS AND BLACK FINISH	LUMENPULSE	LOGHRO-120-48-30K-WW-LF-WAMH6-BK-DIM-ETE		1	LED	3000	34.0	ELECTRONIC	120	WALL	-
R5	4" DEEP CYLINDER LIGHT WITH DARK BRONZE FINISH	LITHONIA	OLCS-8-DOB		1	LED	4000	9.0	ELECTRONIC	120	WALL	-

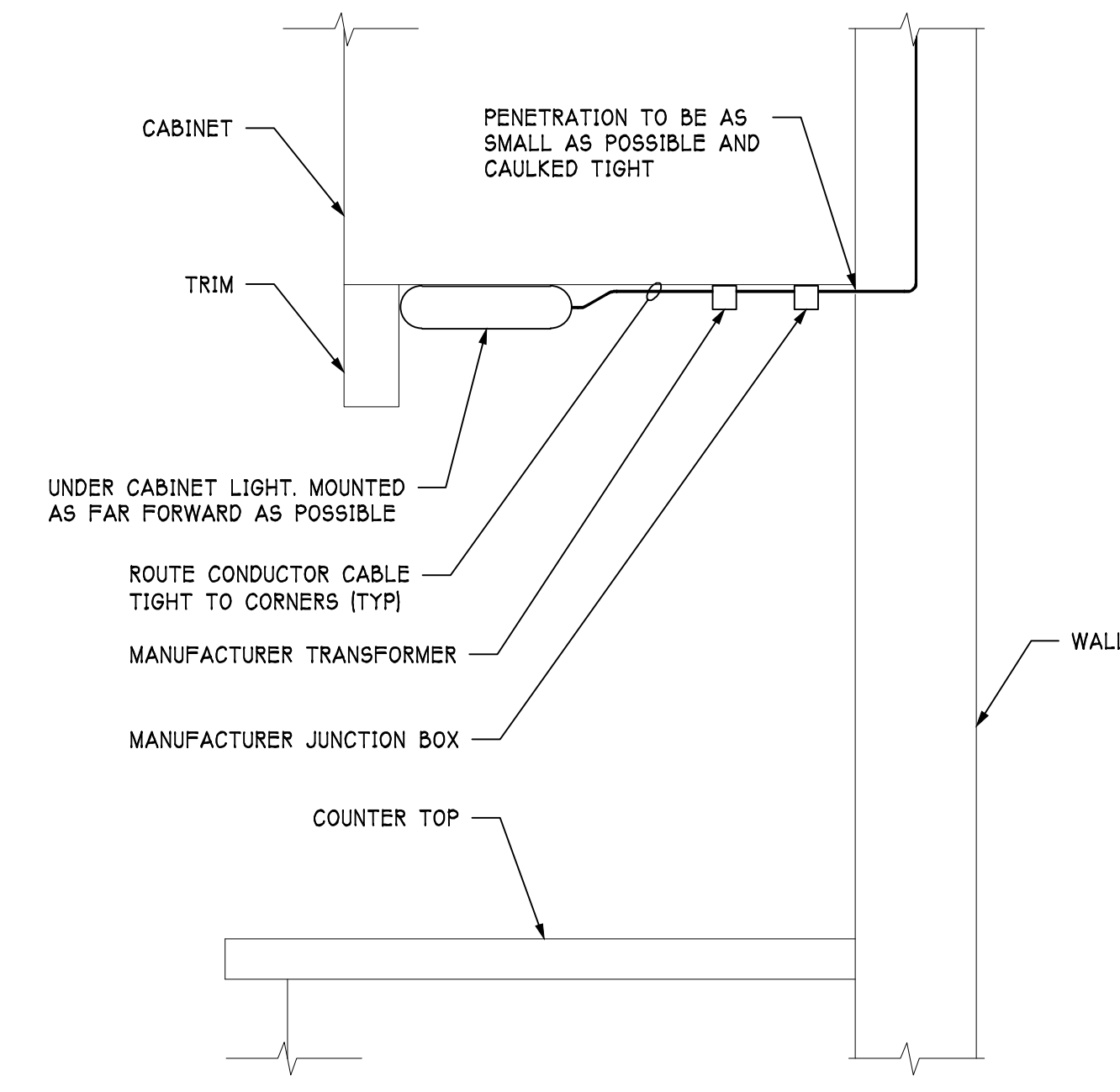


STANDALONE DUCT DETECTOR SCHEMATIC
 NOT TO SCALE

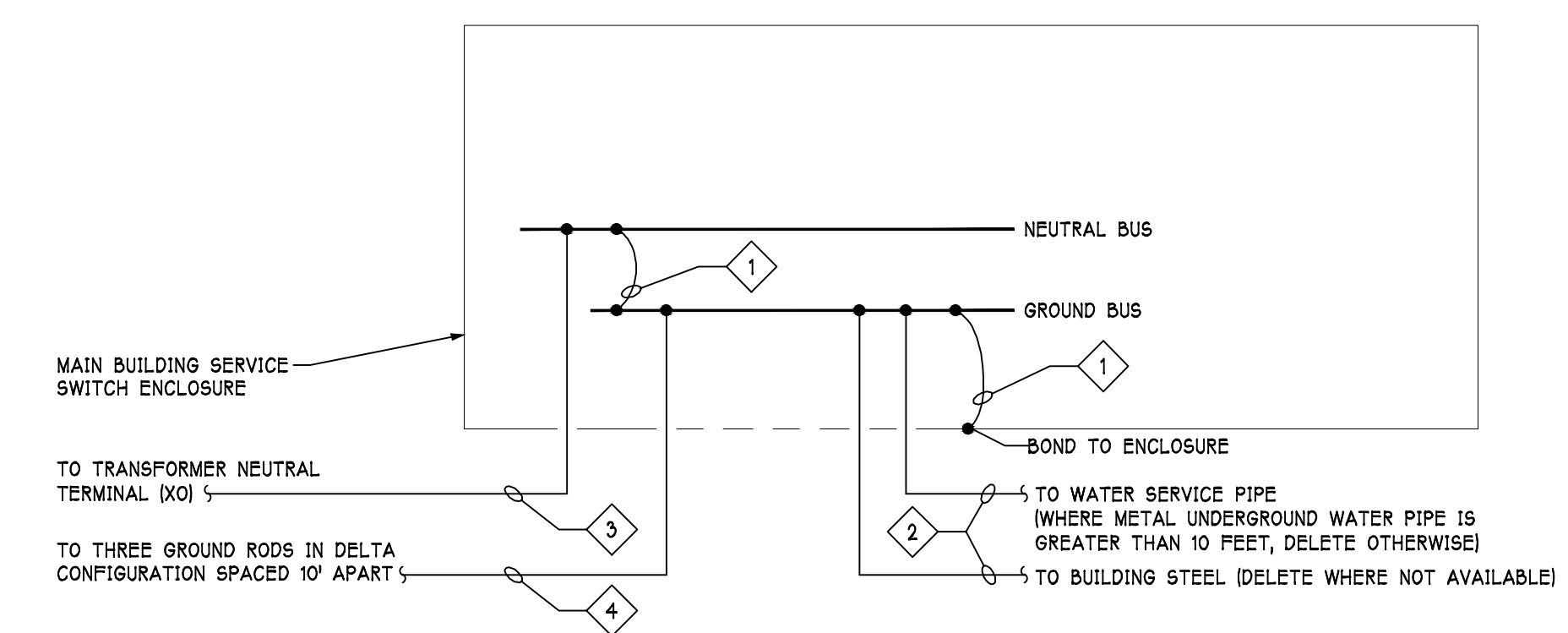


- FOR 2 HOUR (1 HOUR IN MARYLAND) OR LESS RATED WALLS
- ANNULAR SPACE BETWEEN MEMBRANE AND BOX NOT TO EXCEED 1/8".
 - ANY DEVICE BOX WITH A WALL OPENING GREATER THAN 16 SQUARE INCHES IS TO BE PROTECTED WITH A UL LISTED AND APPROVED FORM OF FIRE STOPPING.
 - TWO OR MORE BOXES LOCATED IN A SINGLE STUD CAVITY ARE TO BE PROTECTED WITH PUTTY PADS
 - PUTTY PADS ARE TO BE INSTALLED ON ALL BOXES LOCATED IN A SINGLE WALL, WHEN THE TOTAL AGGREGATE SURFACE AREA OF THE BOXES EXCEEDS 100 SQUARE INCHES PER 100 SQUARE FEET OF WALL. FOR EXAMPLE, 6 DOUBLE GANG BOXES INSTALLED IN A 24"-0" LONG WALL WITH A HEIGHT OF 8'-0" AND FACE ONLY ONE SIDE OF THE WALL, WILL NOT REQUIRE PUTTY PADS AS LONG AS NONE SHARE A STUD CAVITY SPACE.
 - BOXES FACING OPPOSITE SIDES OF A WALL. SEE ABOVE.
 - DO NOT INSTALL OUTLET BOXES BACK TO BACK.
 - BOXES TO BE UL LISTED FOR THIS APPLICATION.

DEVICE IN RATED WALL DETAIL
 NOT TO SCALE



UNDER CABINET LIGHT MOUNTING DETAIL
 NOT TO SCALE



- MAIN BONDING JUMPER: #3/0 (AL) AWG.
- GROUNDING ELECTRODE SYSTEM BONDING JUMPER CONDUCTOR: #3/0 (AL) AWG.
- GROUNDING (NEUTRAL) CONDUCTOR (REFER TO DISTRIBUTION ONE-LINE FOR SIZE).
- SUPPLEMENTAL GROUNDING ELECTRODE BONDING JUMPER CONDUCTOR: #6 AWG

MAIN SERVICE GROUNDING DETAIL
 NOT TO SCALE