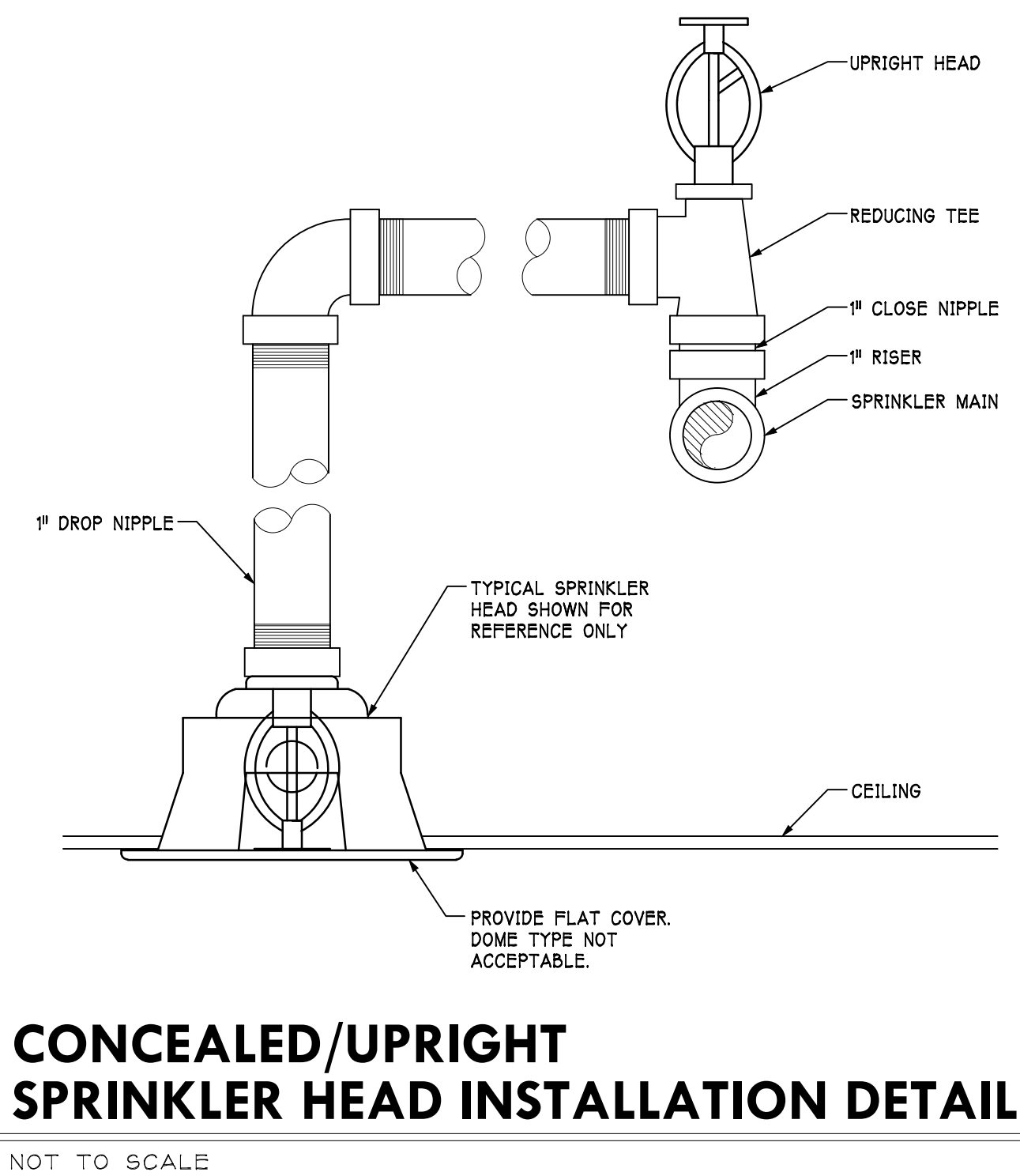
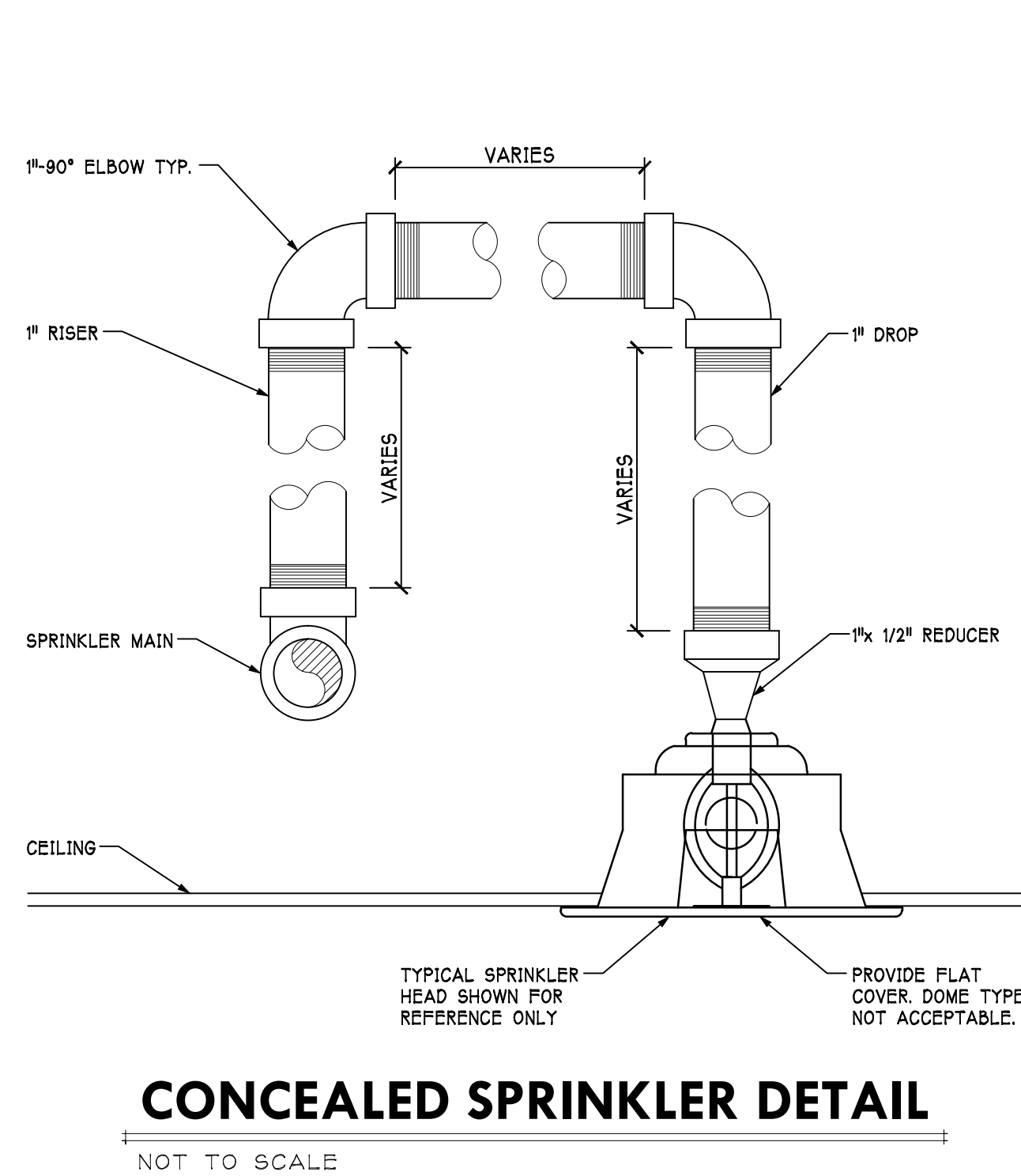


Revisions:

No:	Date:
No:	Date:
No:	Date:
No:	Date:
No:	Date:

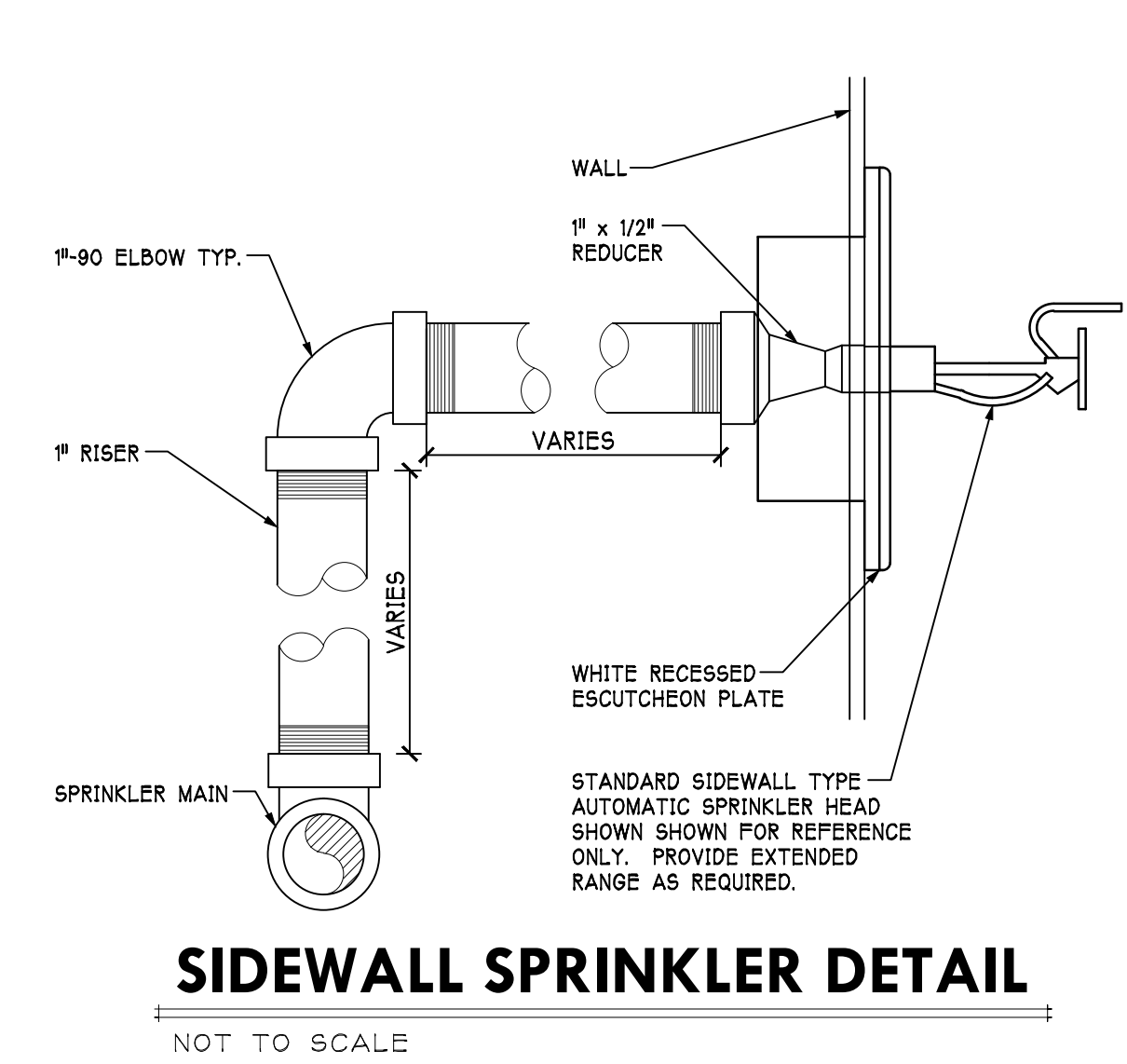
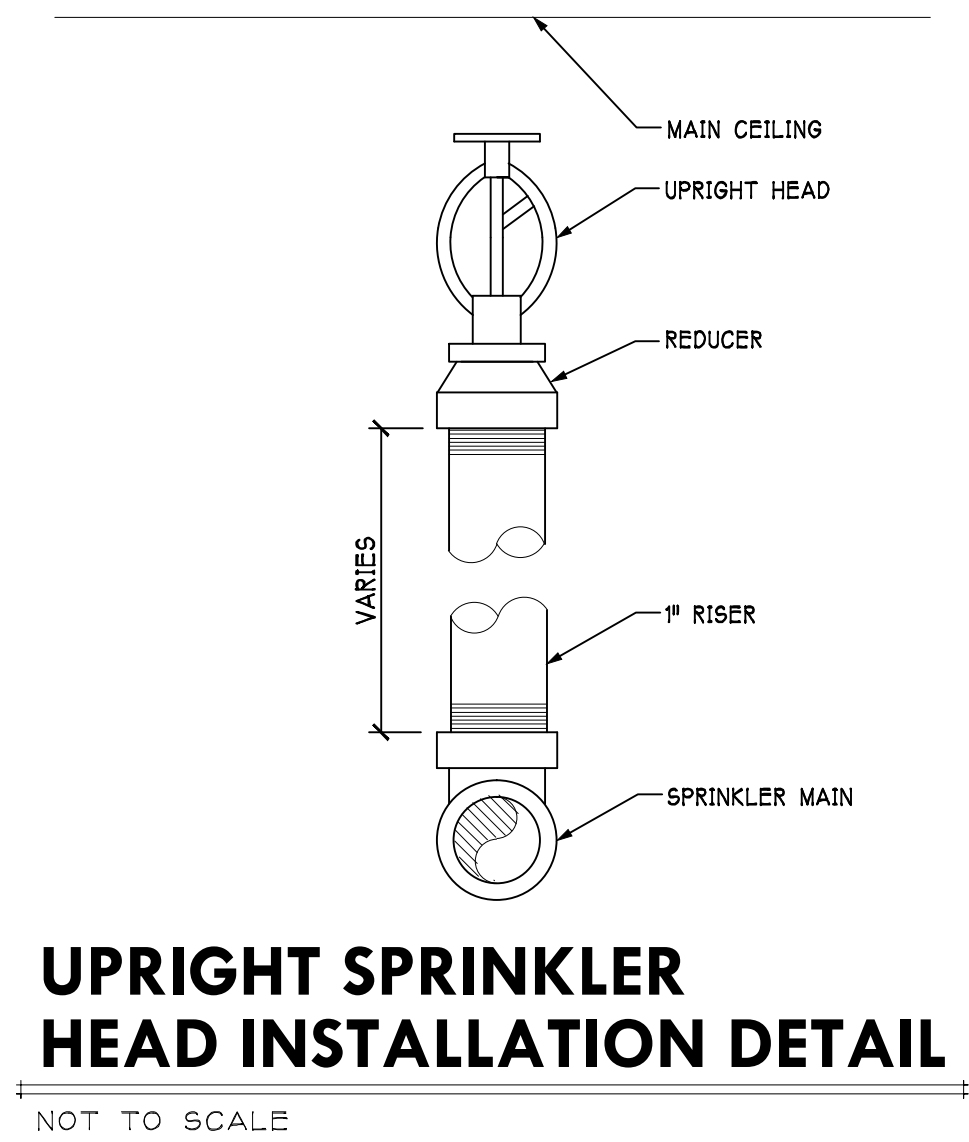


CONCEALED SPRINKLER DETAIL

CONCEALED/UPRIGHT SPRINKLER HEAD INSTALLATION DETAIL

NOT TO SCALE

NOT TO SCALE

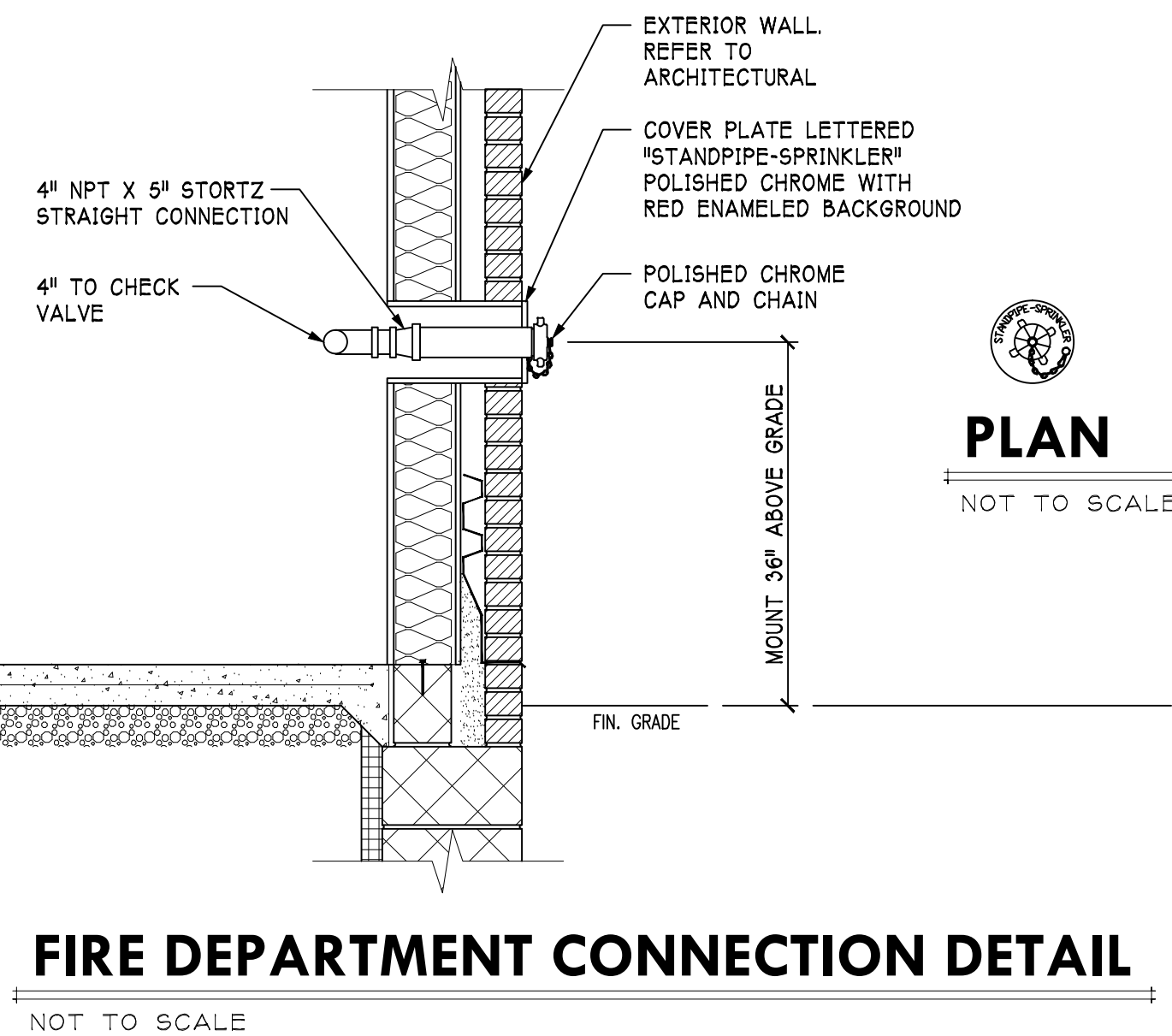


UPRIGHT SPRINKLER HEAD INSTALLATION DETAIL

SIDEWALL SPRINKLER DETAIL

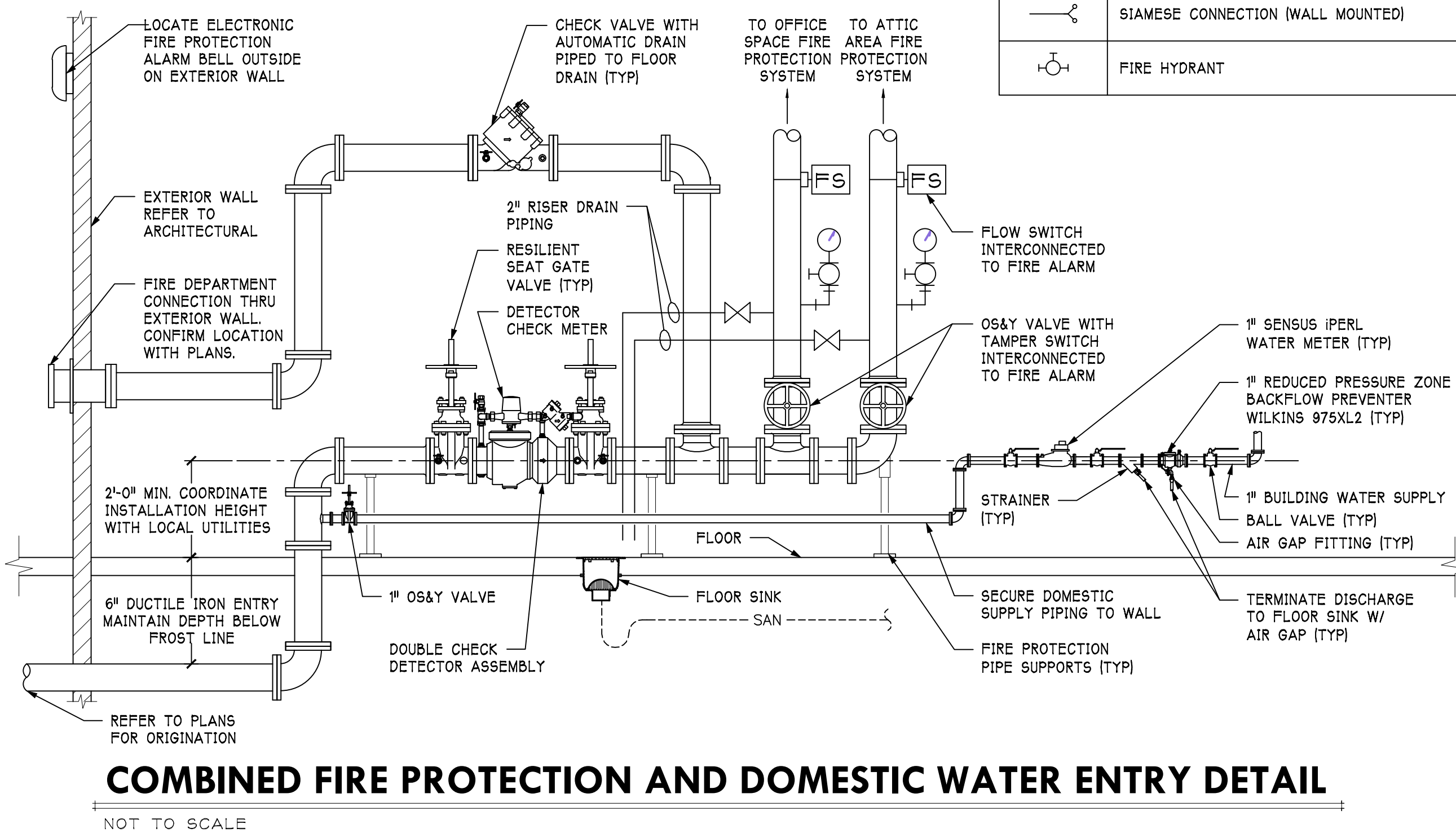
NOT TO SCALE

NOT TO SCALE



FIRE DEPARTMENT CONNECTION DETAIL

NOT TO SCALE



COMBINED FIRE PROTECTION AND DOMESTIC WATER ENTRY DETAIL

NOT TO SCALE

FIRE PROTECTION SYMBOLS	
SYMBOL	DESCRIPTION
—CW—	DOMESTIC COLD WATER PIPING
—F—	FIRE PROTECTION PIPING
—DF—	DRY FIRE PROTECTION PIPING
—○—	PIPE ELBOW UP
—○—	PIPE ELBOW DOWN
—T—	PIPE TEE DOWN
→	DIRECTION OF FLOW
— — —	UNION
— — —	CONCENTRIC REDUCER
— — —	ECCENTRIC REDUCER
— — —	FLEXIBLE CONNECTION
—X—	PIPE ANCHOR
— — —	PIPE GUIDE
— — —	PIPE CAP OR PLUG
— — —	GATE VALVE
— — —	CIRCULATING PUMP
— — —	GLOBE VALVE
— — —	BALL VALVE
— — —	BUTTERFLY VALVE
— — —	ANGLE VALVE
— — —	CHECK VALVE (SWING)
— — —	CHECK VALVE (SPRING)
— — —	PLUG VALVE
— — —	NEEDLE VALVE
— — —	OUTSIDE SCREW AND YOKE VALVE (OS&Y)
— — —	FLOW SWITCH
— — —	TAMPER SWITCH
— — —	BACKFLOW PREVENTER
— — —	DIRECTION OF PIPE PITCH
— — —	PENDENT SPRINKLER HEAD
— — —	CONCEALED SPRINKLER HEAD
— — —	UPRIGHT SPRINKLER HEAD
— — —	RECESSED PENDENT SPRINKLER HEAD
— — —	SPRINKLER HEAD (SIDEWALL)
— — —	BACK TO BACK ATTIC SPRINKLER (DRY)
— — —	SINGLE DIRECTION ATTIC SPRINKLER (DRY)
— — —	HIP ATTIC SPRINKLER (DRY)
— — —	SIAMESE CONNECTION (YARD)
— — —	SIAMESE CONNECTION (WALL MOUNTED)
— — —	FIRE HYDRANT

FIRE PROTECTION DRAWING SYMBOLS	
SYMBOL	DESCRIPTION
◇	CONSTRUCTION KEY NOTE
□	DEMOLITION KEY NOTE
EF 1	EQUIPMENT DESIGNATION
---	LINE OF DEVICES OR EQUIPMENT BEYOND OR BELOW THE FLOOR
---	LINE OF EXISTING DEVICES OR EQUIPMENT
---	LINE OF NEW OR MODIFIED DEVICES OR EQUIPMENT
---	EXISTING SYSTEM COMPONENT TO BE REMOVED

FIRE PROTECTION GENERAL NOTES	
A	THESE DRAWINGS ARE DIAGRAMMATIC AND INDICATE THE GENERAL INTENT OF THE WORK. PROVIDE/REWORK FIRE PROTECTION SYSTEMS COMPLETE, PER APPLICABLE CODES, PER NFPA, AND PER REQUIREMENTS OF AUTHORITIES HAVING JURISDICTION INCLUDING ALL PIPING, OFFSETS, FITTINGS, DRAINS, VALVES, SPRINKLER HEADS, ETC. AS REQUIRED FOR A COMPLETE OPERABLE SYSTEM.
B	CONTRACTOR SHALL COORDINATE HIS WORK WITH THE WORK OF ALL OTHER TRADES. SPRINKLER PIPING SHALL NOT BE LOCATED BELOW MECHANICAL EQUIPMENT.
C	MINIMUM FIRE PROTECTION RUN-OUT PIPE SIZE TO SPRINKLER HEADS SHALL BE 1".
D	CONTRACTOR SHALL MAKE PRESSURE AND FLOW TEST PRIOR TO SYSTEM DESIGN. REFER TO SPECIFICATIONS FOR REQUIREMENTS.
E	CONTRACTOR SHALL MAKE APPLICATION AND PAY FOR ALL INSPECTION, PERMIT AND LICENSE REQUIRED BY THE LOCAL AUTHORITY.
F	PROVIDE AN AUTOMATIC WET PIPE SPRINKLER SYSTEM IN ACCORDANCE WITH NFPA 13 LIGHT HAZARD CLASSIFICATION. HYDRAULIC CALCULATIONS SHALL BE BASED ON DENSITY OF 0.1 GPM/SQ. FT. OVER THE MOST REMOTE 1500 SQ. FT.
G	DO NOT ROUTE PIPING THROUGH STRUCTURAL MEMBERS REQUIRING FIELD OPENINGS LARGER THAN 1", WITHOUT WRITTEN CONSENT FROM ENGINEER. STRUCTURAL MEMBERS TO INCLUDE BUT ARE NOT LIMITED TO BEAMS, COLUMNS, JOIST, AND STRUCTURAL WALL ELEMENTS CALLED OUT ON STRUCTURAL DRAWINGS.

FIRE PROTECTION ABBREVIATIONS	
ABBREV.	DEFINITION
AAV	COMPRESSED AIR
AMP	AUTOMATIC AIR VENT
BFP	AMPERE
CFM	BACKFLOW PREVENTER
CI	CUBIC FEET PER MINUTE
CO	CAST IRON
CV	CLEAN OUT
CW	CONTROL VALVE
DEG	DOMESTIC COLD WATER
DEG	DEGREES
EX	EXISTING
F	DEGREES FAHRENHEIT
FC	FEASIBLE CONNECTION
FD	FLOOR DRAIN
FH	FIRE HYDRANT
FHC	FIRE HOSE CABINET
FHR	FIRE HOSE RACK
FHV	FIRE HOSE VALVE
FLA	FULL LOAD AMPS
FOS	FUEL OIL SUPPLY
FVC	FIRE VALVE CABINET
G	NATURAL GAS
GPM	GALLONS PER MINUTE
HP	HORSEPOWER
HYD	HYDRANT
HZ	HERTZ
ID	INSIDE DIAMETER
IE	INVERT ELEVATION
KW	KILOWATT
LRA	LOCKED ROTOR AMPS
MD	MOTORIZED DAMPER
MV	MANUAL AIR VENT
NC	NOISE CRITERIA
NPCW	NON POTABLE COLD WATER
OD	OUTSIDE DIAMETER
OS&Y	OUTSIDE SCREW AND YOKE
PA	PIPE ANCHOR
PD	PRESSURE DROP (FEET OF WATER)
PG	PIPE GUIDE
PRV	PRESSURE REDUCING VALVE
PSIA	POUNDS PER SQUARE INCH - ABSOLUTE
PSI	POUNDS PER SQUARE INCH - GAUGE
RPM	REVOLUTIONS PER MINUTE
RPZ	REDUCED PRESSURE ZONE
STK	STACK
UG	UNDER GROUND
UN	UNLESS OTHERWISE NOTED
VAC	VACUUM
WG	WATER GAUGE

NEWCOMER ASSOCIATES
 architecture + engineering
 1105 Shiller Avenue, Chambersburg, PA 17201 Tel: 717.265.0101 Fax: 717.265.7580 www.newcomerassociates.com

King Street Church Office Building Renovation
 56 North Second Street Chambersburg, Pennsylvania 17201