

SHEET KEYED NOTES

- 1 MOUNT BOTTOM OF 8-1 10'-0" ABOVE FINISHED FLOOR. ANGLE HORIZONTAL BLADES 22.5°
- 2 RA DUCT DOWN IN ARCHITECTURAL CHASE.
- 3 DUCT UP TO ATTIC SPACE. SEE M204 ENLARGED MECHANICAL ATTIC PLAN FOR CONTINUATION.
- 4 DUCT DOWN FROM ATTIC SPACE. SEE M204 ENLARGED MECHANICAL ATTIC PLAN FOR CONTINUATION.
- 5 MOUNT BOTTOM OF R-3 0'-8" ABOVE FINISHED FLOOR.
- 6 VOLUME DAMPER TO BE LOCATED ABOVE CEILING. PROVIDE ACCESS DOOR IN CHASE FOR VOLUME DAMPER.

Revisions:

No: Date:

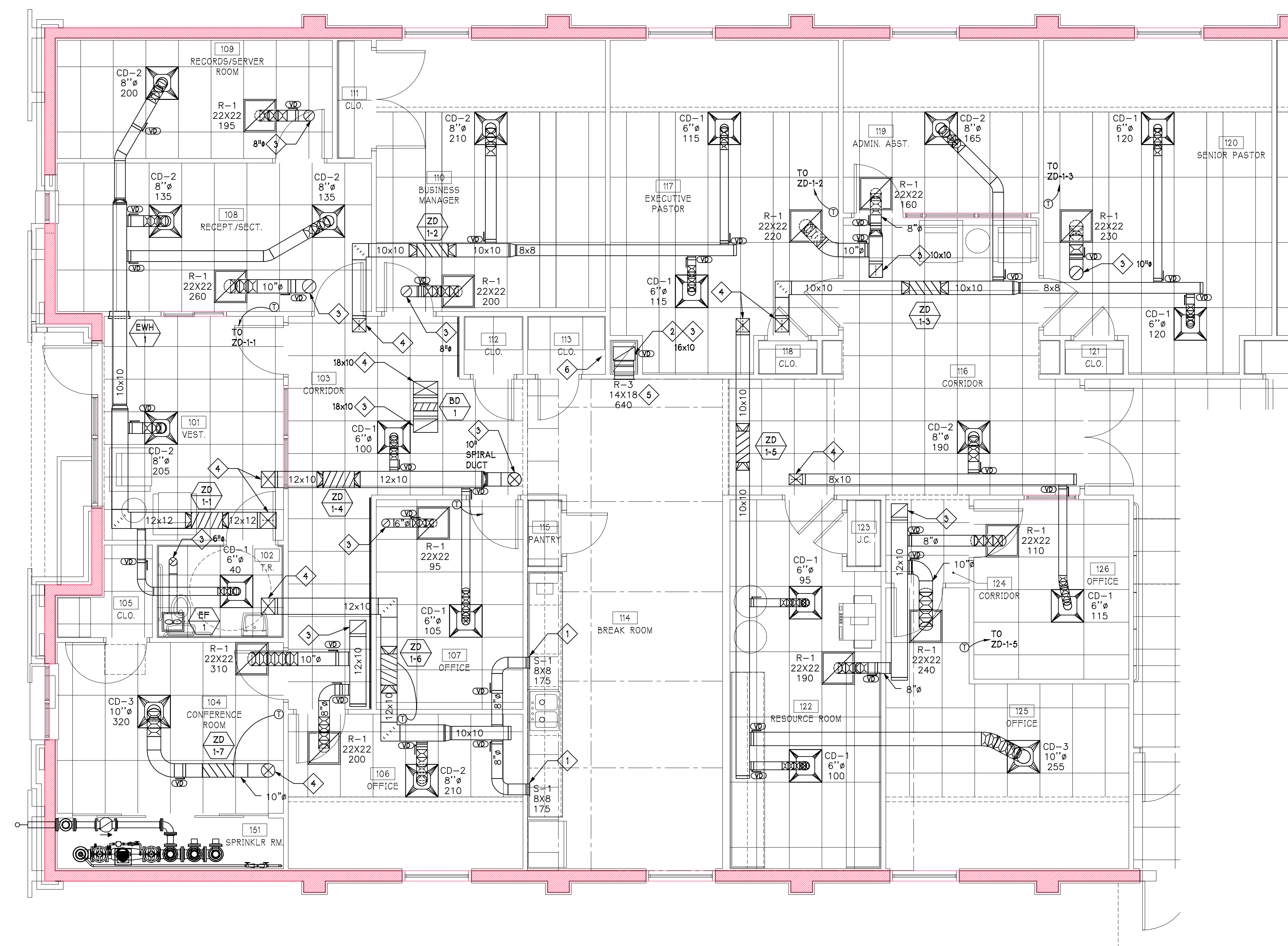
No: Date:

No: Date:

No: Date:

No: Date:

No: Date:



ENLARGED MECHANICAL PLAN

1/4" = 1'-0"

NEWCOMER ASSOCIATES
 architecture + engineering

1105 Shiller Avenue - Chambersburg, PA 17201 Tel: 717.265.0101 Fax: 717.263.7580 www.newcomerassociates.com

**King Street Church
 Office Building Renovation**

56 North Second Street Chambersburg, Pennsylvania 17201

© 2016
 Newcomer Associates, Inc.

Drawing Title:
 ENLARGED
 MECHANICAL
 PLAN

Sheet No.

M202

Date: January 29, 2016