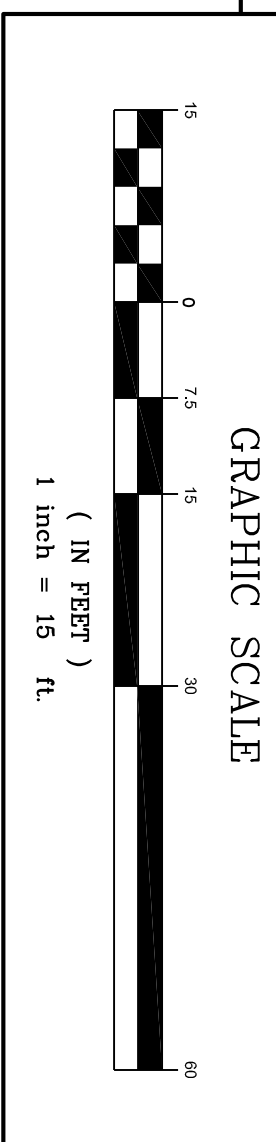
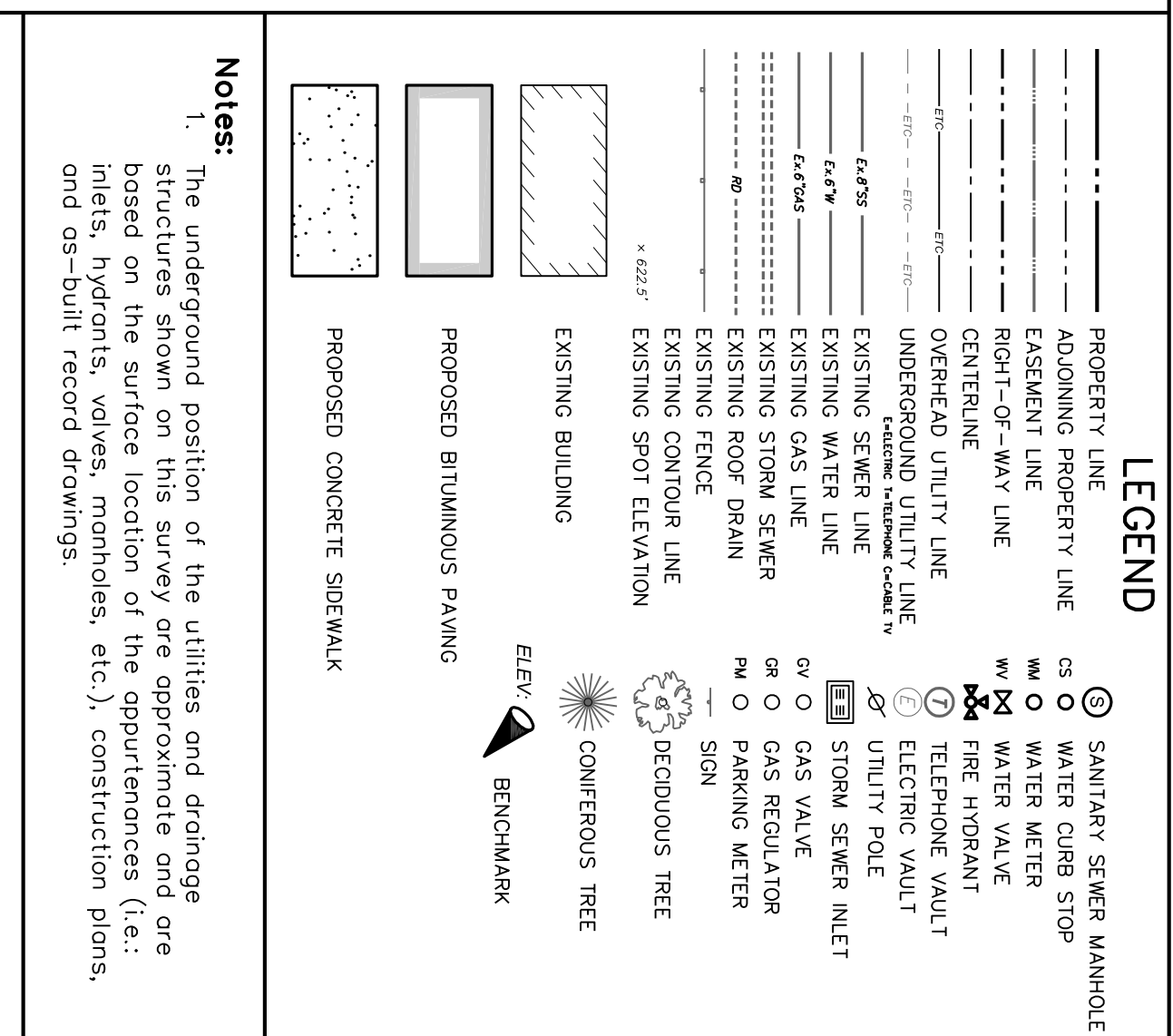


- Work Key**
- 1 Demolish portion of building (hatched area). Remove and dispose debris.
 - 2 Remove and dispose concrete sidewalk (dotted area)
 - 3 Remove and dispose concrete curb and replace with Penndot RC-64M Plain Concrete Curb after completion of utility work.
 - 4 Sew cut.
 - 5 Remove and dispose bituminous paving (shading) and restore pavement per Penndot RC-30M after completion of utility work.
 - 6 Coordinate removal of Temporary Service Pole, Meter, and Conductors with the Borough of Chambersburg Electric Department at the completion of the project.
 - 7 Remove and dispose mechanical unit and ductwork.
 - 8 Coordinate removal of telecommunication lines with CenturyLink and Comcast. Coord.
 - 9 Install cleanout and connect to existing sanitary sewer service lateral in accordance with Borough of Chambersburg Specifications.
 - 10 Coordinate with Borough of Chambersburg Water and Sewer Department and connect and install 6"x6" Topping Sleeve and Valve, 6" combination fire suppression and domestic water service lateral, and Leak Detection Meter per Borough of Chambersburg Specifications. Disconnect two water service laterals at the main per Borough Specifications.

- Work Key**
- 11 Coordinate with Borough of Chambersburg Gas Department for installation and connection to new Gas Meter - Regulator Set.
 - 12 Connect new downspout to existing transition to existing underground storm water collection system.
 - 13 Install new exterior mechanical unit. Refer to Mechanical Plans.
 - 14 Remove existing pole and extend existing conduits. Coordinate installation with the Borough of Chambersburg Electric Department.
 - 15 In accordance with Borough of Chambersburg Specifications, extend two (2) 4" diameter PVC conduits to a new concrete riser at existing pole and include pull cores. Monitor 2" of separation between concrete riser and pole. The 2" separation is to be maintained for the full-depth of the riser both above and below grade.
 - 16 Install new concrete sidewalk (dotted area).
 - 17 Install new paving overlay (shading denotes limits).
 - 18 Install new concrete wheel stop.
 - 19 Install new 4" wide point striping.
 - 20 Relocate wall-mounted ADA Accessible parking stall placards.
 - 21 Stabilize all disturbed areas with permanent seeding.



Notes:

1. Owner/Applicant: King Street Church of the United Brethren in Christ, 182 East King Street, Chambersburg, PA 17201
2. Contact: Kenneth L. Adams, Jr. (717) 284-4951
3. The purpose of this plan is to provide for the modification of the utility connections to the existing building that is to be renovated at #56 North Second Street. The existing utility connections are shown on the approved Land Development Plan for King Street Church of the United Brethren in Christ prepared by Dennis E. Beck and recorded May 29, 2014 as Franklin County Instrument #2014-09142 and recorded May 29, 2014 as Franklin County Instrument #2014-09142.
4. The proposed changes on this plan are for #48 and #56 North Second Street, 48 North Second Street being the land conveyed to King Street Church of the United Brethren in Christ by deed dated May 7, 2009 and recorded as Franklin County Instrument #2009-10654, 56 North Second Street being the land conveyed to King Street Church of the United Brethren in Christ by deed dated August 22, 2013 and recorded as Franklin County Instrument #2013-18883.
5. Project Areas: #48 North Second Street = 8,448 Sq.Ft. or 0.1939 Acres; #56 North Second Street = 25,452 Sq.Ft. or 0.5843 Acres
6. Existing Uses: Central Care = CC.
7. Proposed Uses: #48 North Second Street = Parking Area for King Street Church of the United Brethren in Christ; #56 North Second Street = Professional and Business Offices for King Street Church of the United Brethren in Christ.
8. Minimum Building Setback Requirements: Front = 0', Side = 0', Rear = 25'.
9. Maximum Allowable Building Height = Six Stories or 72 feet.
10. Off-Street Parking Requirements:
 - Parking Stalls Provided: Street = 25 Stalls; #48 North Second Street = 37 Stalls; #56 North Second Street = 62 Stalls; Total = 62 stalls.
11. These properties are served by the Borough of Chambersburg Public Water and Sanitary Sewer Systems. Water and Sanitary Sewer Service Line disconnections shall be performed in accordance with the prevailing Borough of Chambersburg Standards and Specifications.
12. Concrete curb and sidewalk construction within the street rights-of-way shall be constructed in accordance with the Borough of Chambersburg Standards and Specifications.

Site and Utility Plan

for

King Street Church of The United Brethren in Christ

located in

Borough of Chambersburg, Franklin County, PA

Dennis E. Black Engineering, Incorporated

ENGINEERING-SURVEYING-PLANNING

2400 PHILADELPHIA AVENUE # 222 NORTH SECOND STREET
CHAMBERSBURG, PA 17201 MCOO (717)485-4028
(717)285-8794 (888)238-0661

CLIENT NO. 4215 ORDER NO. 6179 SHEET 1 OF 2
DATE 2/20/2016 ALTCAD DRAWING NO. 16-14
CHK. GDW REG. NUMBER AUTOCAD DRAWING NO.
APP. GDW SCALE 1"=15' APP. GDW

THE ORIGINAL DRAWING AND THE INFORMATION SHOWN THEREON ARE THE PROPERTY OF DENNIS E. BLACK ENGINEERING, INCORPORATED. ANY REPRODUCTION OR TRANSMISSION WITHOUT WRITTEN PERMISSION IS PROHIBITED.