

Revisions:

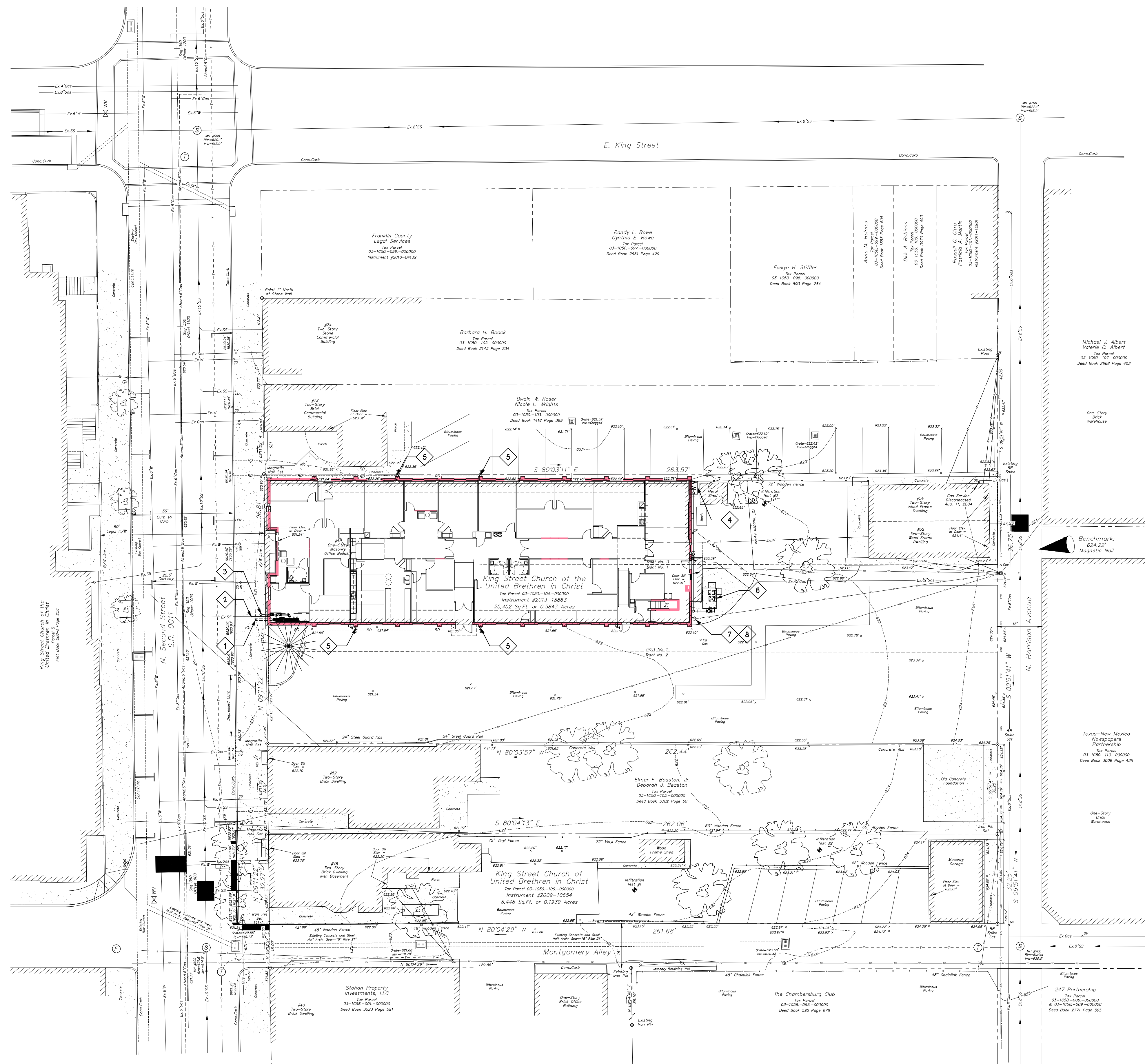
No:	Date:
No:	Date:
No:	Date:
No:	Date:
No:	Date:

UTILITIES GENERAL NOTES

- THESE DRAWINGS ARE DIAGRAMMATIC & INDICATE THE GENERAL INTENT OF THE WORK. PROVIDE COMPLETE UTILITY SYSTEMS PER APPLICABLE CODES. INCLUDE ALL REQUIRED COMPONENTS AND MATERIALS REQUIRED BY LOCAL UTILITIES. COORDINATE WITH LOCAL UTILITIES PRIOR TO STARTING WORK.
- PROVIDE COMPLETE AND WORKING UTILITY SYSTEMS PER SPECIFICATIONS AND ALL APPLICABLE CODES.
- PROVIDE CODE REQUIRED CLEARANCE FOR ALL CLEAN-OUTS INSTALLED IN STORMWATER, WASTE, AND VENT PIPING.
- MINIMUM UNDERGROUND WASTE OR STORM PIPE SIZE SHALL BE 3", MINIMUM UNDERGROUND CONDENSATE WASTE SHALL BE 2".
- CONTRACTORS ARE TO REVIEW ALL CONSTRUCTION DOCUMENTS AND APPLY DRAWING DETAILS TYPICALLY THROUGHOUT.
- FIRE PROTECTION CONTRACTOR SHALL PERFORM A WATER FLOW AND PRESSURE TEST PRIOR TO FIRE PROTECTION SPRINKLER SYSTEM DESIGN. REFER TO SPECIFICATIONS FOR SYSTEM REQUIREMENTS.
- WATER PIPE (FIRE SPRINKLER, COLD WATER ETC.) SHALL BE BURIED WITH NOT LESS THAN 4'-0" COVER. IF EXTREME FROST DEPTH EXCEEDS 3'-6" BURY PIPE 6" BELOW EXTREME FROST DEPTH.
- GAS PIPE SHALL BE BURIED WITH NOT LESS THAN 1'-6" OF COVER.
- BURIED ELECTRICAL CONDUCTORS SHALL BE INSTALLED IN CONDUIT UNLESS CONTRACTOR HAS WRITTEN PERMISSION FROM ARCHITECT/ENGINEER. BURIED CONDUIT/CONDUCTORS SHALL BE BURIED WITH NOT LESS THAN 2'-0" OF COVER.
- WATER HYDRANTS AND HOSE BIBS SHALL NOT BE SUPPLIED FROM THE IRRIGATION SYSTEM.
- GAS PIPING SHALL MAINTAIN 6" OF SEPARATION FROM ANY OTHER UNDERGROUND SERVICE PIPE. GAS PIPING SHALL MAINTAIN 12" OF SEPARATION FROM ANY UNDERGROUND ELECTRICAL CONDUCTOR OR CONDUIT INCLUDING LOW VOLTAGE CONDUCTORS SUCH AS UNDERGROUND CABLE TV OR TELEPHONE.
- ALL INVERT DEPTHS ARE GIVEN WITH RESPECT TO BASEMENT FINISHED FLOOR ELEVATION. BASEMENT FINISHED FLOOR ELEVATION IS ASSUMED TO BE 100.00'. FOR BASEMENT FINISHED FLOOR ELEVATION WITH RESPECT TO SEA LEVEL, REFERENCE CIVIL PLANS.

SHEET KEYED NOTES

- NEW 6" COMBINATION FIRE PROTECTION AND DOMESTIC SUPPLY ENTRY.
- EXISTING 3" SANITARY BUILDING EXIT TO BE REUSED.
- FIRE DEPARTMENT 5" STORTZ CONNECTION. COORDINATE REQUIREMENTS WITH A.H.J.
- INSTALL NEW NATURAL GAS METER. FIELD VERIFY EXISTING NATURAL GAS POINT OF CONNECTION. COORDINATE REQUIREMENTS WITH A.H.J.
- CONNECT NEW DOWNSPOUT TO EXISTING TRANSITION TO EXISTING UNDERGROUND STORM WATER COLLECTION SYSTEM.
- NEW EXTERIOR MECHANICAL UNIT. REFER TO MECHANICAL PLANS.
- INSTALL NEW POWER POLE AND ELECTRICAL SERVICE. REFER TO ADDITIONAL PLANS AND COORDINATE WITH LOCAL UTILITIES.
- COORDINATE OVERHEAD INSTALLATION OF PHONE SERVICE WITH LOCAL UTILITY AND OTHER TRADES.



UTILITIES COORDINATION PLAN
 1" = 20'

NEWCOMER ASSOCIATES
 architecture + engineering
 1105 Shiller Avenue - Chambersburg, PA 17201 - Tel: 717.265.0101 Fax: 717.263.7380
 www.newcomerasociates.com

**King Street Church
 Office Building Renovation**
 56 North Second Street Chambersburg, Pennsylvania 17201

© 2016 Newcomer Associates, Inc.
Drawing Title:
 UTILITIES COORDINATION PLAN

Sheet No.
UC101
 Date: January 29, 2016