



ARCHITECT: Newcomer Associates
1105 Sheller Avenue
Chambersburg, PA 17201
Phone: 717-263-0101; Fax: 717-263-7380

PROJECT: King Street Church (Project No. 1526)
Chambersburg, Pennsylvania

DATE: March 30, 2016

ADDENDUM #3
(Clarifications and Revisions)

SPECIFICATIONS:

3.01 Section 09 5 1 13 Acoustical Panel Ceilings

A. REVISE

Paragraph 2.2A

A. Armstrong

1. SACT 1- Model 1774 Dune
 - a. Angled tegular
 - b. 24" x 24"
 - c. White
2. SACT 2 - Model 1914 Ultima
 - a. beveled tegular
 - b. 24" wide x 48" long.
 - c. White
3. SACT 3 - Model 1993 Ultima
 - a. beveled tegular
 - b. 12" wide x 48" long.
 - c. White
4. SACT 4 - Model 1776 Dune
 - a. Angled tegular
 - b. 24" x 48"
 - c. White

DRAWINGS:

3.02 Sheet A601 Room Finish and Door Schedules (Revision #2 dated 03/29/16)

A. REVISE

Ceiling Material and Remarks

3.03 Sheet UC101 Utilities Coordination Plan (Revision #1 dated 03/29/16)

A. REVISE Sheet Keyed Notes

3.04 Sheet E201 Power Plans (Revision #1 dated 03/29/16)

A. ADD Details

B. REVISE Floor Plan Keyed Notes

3.05 Sheet E502 Electrical Panels and Single Line Diagram (Revision #1 dated 03/29/16)

A. REVISE Note

3.06 Site and Utility Plan (Revision dated 03/30/16)

A. REPLACE Entire Drawing Sheets 1 and 2

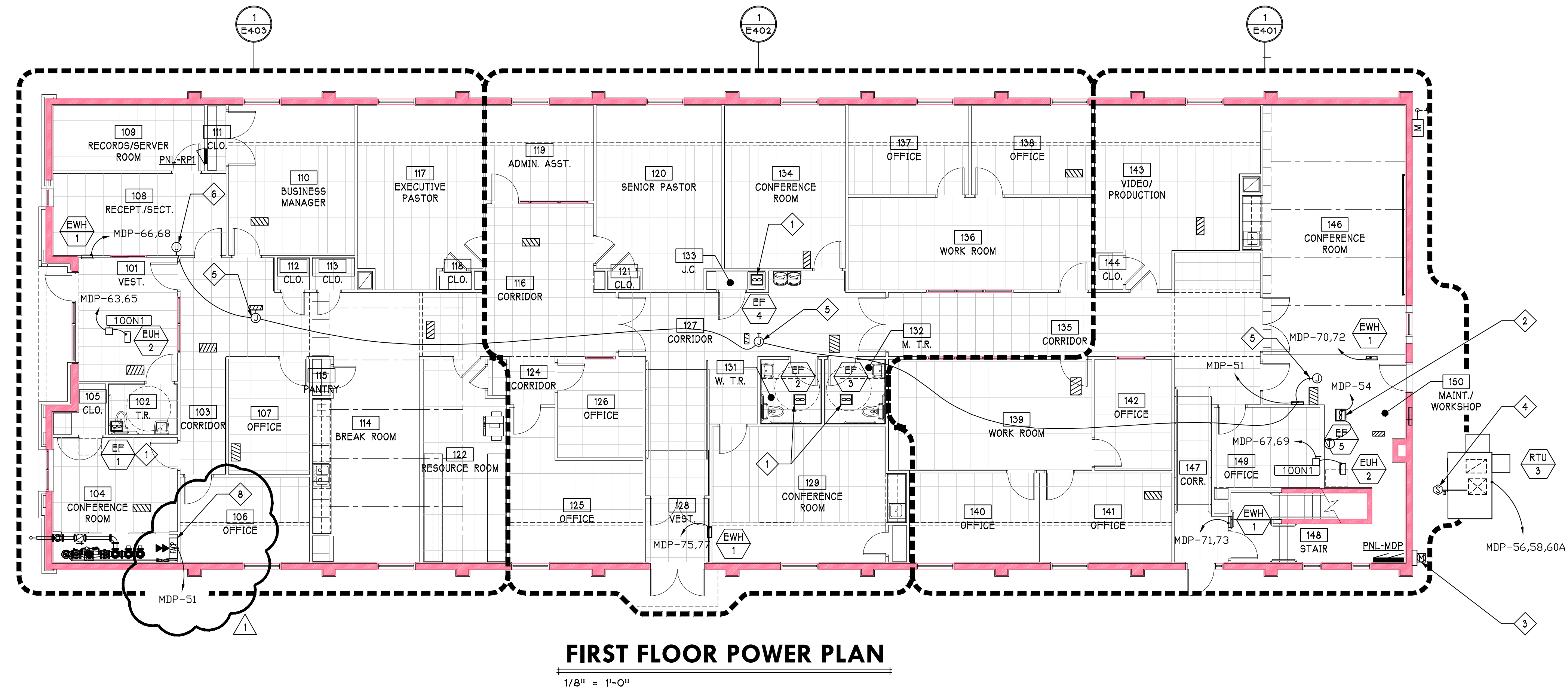
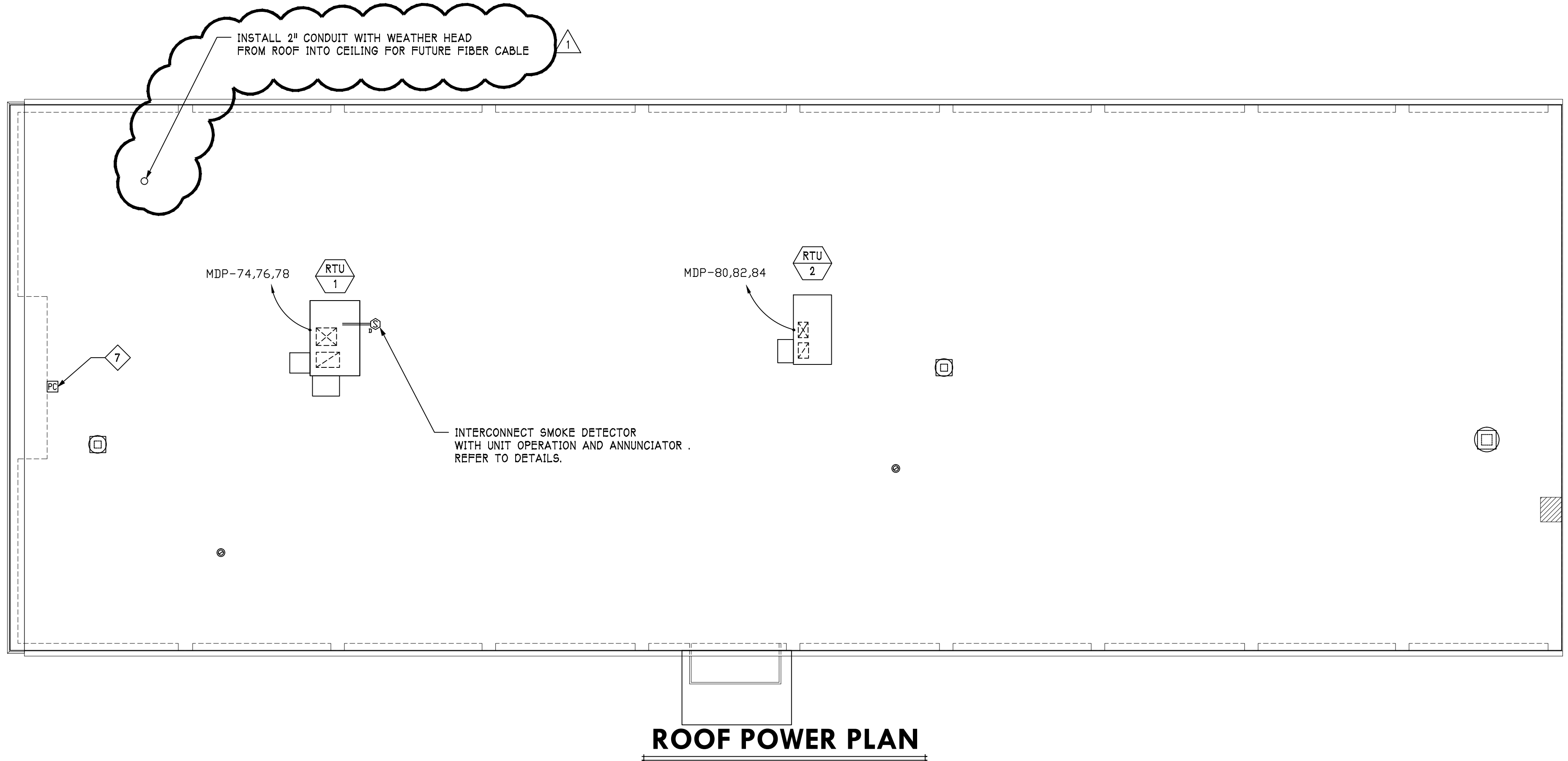
Sheet is reissued to reflect extent of Borough permanent paving patching. There is no change to temporary patching scope required by Contract. Sprinkler/water tap and disconnect work must be completed between September 12 and October 14, 2016. Contract requires temporary paving patch to be maintained per all Borough standards as necessary until the permanent patch is installed by the Borough in May, 2017.

Addendum #3 has been uploaded to the FTP site into the "PDF (Current Set)" folder and "Addendum #3" folder for your immediate use and distribution. If you have any questions, please contact me.

END OF ADDENDUM #3

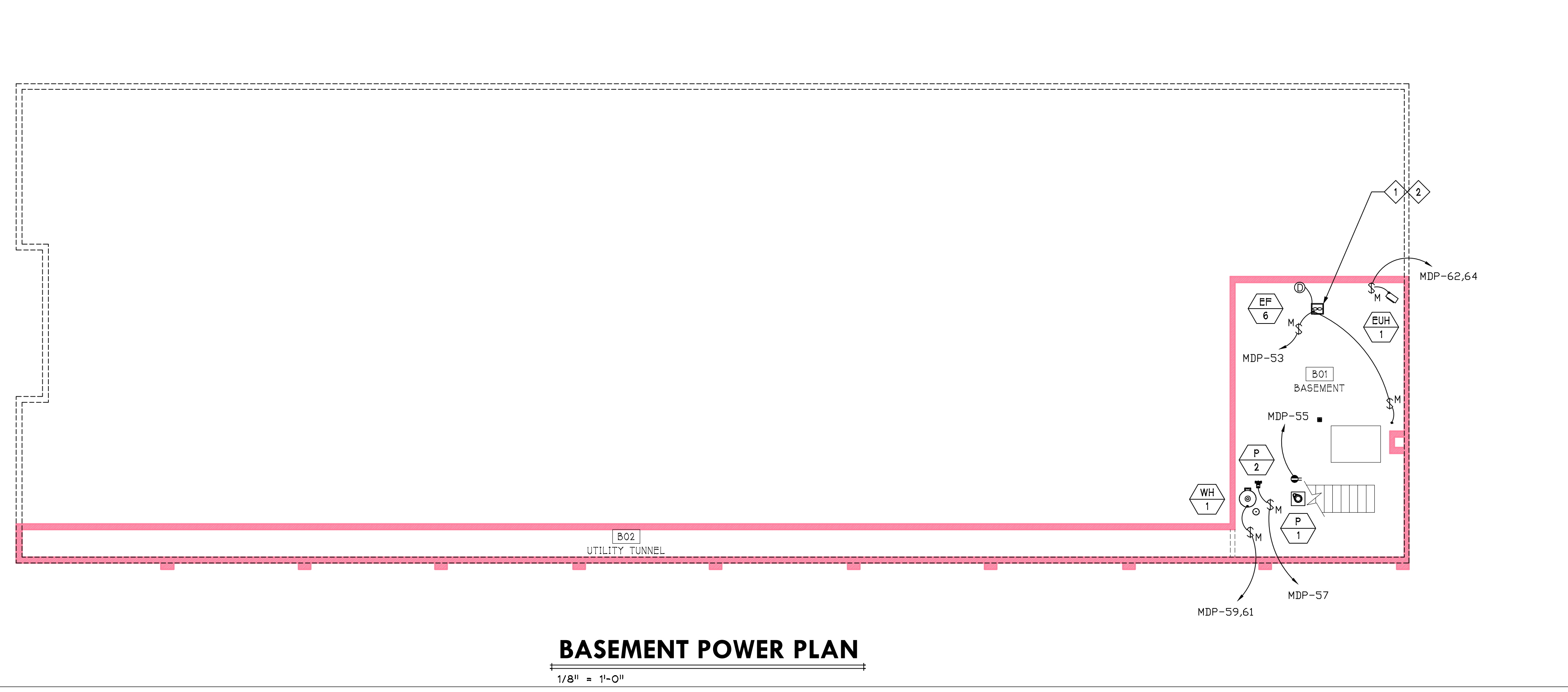
Revisions:

No:	Date:
1	05/29/16
Revisions Per Addendum #3	
No:	Date:
No:	Date:
No:	Date:
No:	Date:
No:	Date:



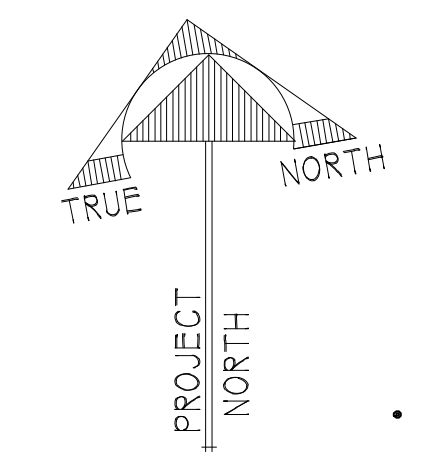
FLOOR PLAN KEYED NOTES

- CONNECT TO LIGHTING CIRCUIT FOR SPACE. REFER TO LIGHTING PLANS.
- LINE VOLTAGE THERMOSTAT PROVIDED BY OTHERS AND INSTALLED BY ELECTRICAL TRADE. COORDINATE WITH MECHANICAL TRADES.
- INSTALL NEW METER BASE FOR NEW ELECTRICAL SERVICE. COORDINATE WITH LOCAL UTILITIES AND MECHANICAL TRADES.
- INTERCONNECT SMOKE DETECTOR WITH MECHANICAL EQUIPMENT OPERATIONS AND CENTRAL MONITORING SYSTEM. REFER TO DETAILS.
- INSTALL CONTROL TRANSFORMER PROVIDED BY MECHANICAL TRADES AND PREPARE LOCATION FOR LOW VOLTAGE CONNECTIONS BY MECHANICAL TRADES.
- LOCATION OF STAND ALONE DUCT SMOKE DETECTOR SYSTEM. REFER TO DETAILS.
- EXTERIOR SITE LIGHTING PHOTOCELL CONTROL. INSTALL PER MANUFACTURERS INSTRUCTIONS.
- INSTALL NOTIFIER 4TUDAC FIRE ALARM COMMUNICATOR OR APPROVED EQUAL INCLUDE (2) DEDICATED PHONE LINES AND CONNECT TO FIRE PROTECTION FLOW AND TAMPER SWITCHES.



BASEMENT KEYED NOTES

- LINE VOLTAGE THERMOSTAT PROVIDED BY OTHERS AND INSTALLED BY ELECTRICAL TRADE. COORDINATE WITH MECHANICAL TRADES.
- CONNECT MOTOR OPERATED DAMPER TO EXHAUST FAN TO OPEN DAMPER WHEN FAN IS ON.



Revisions:

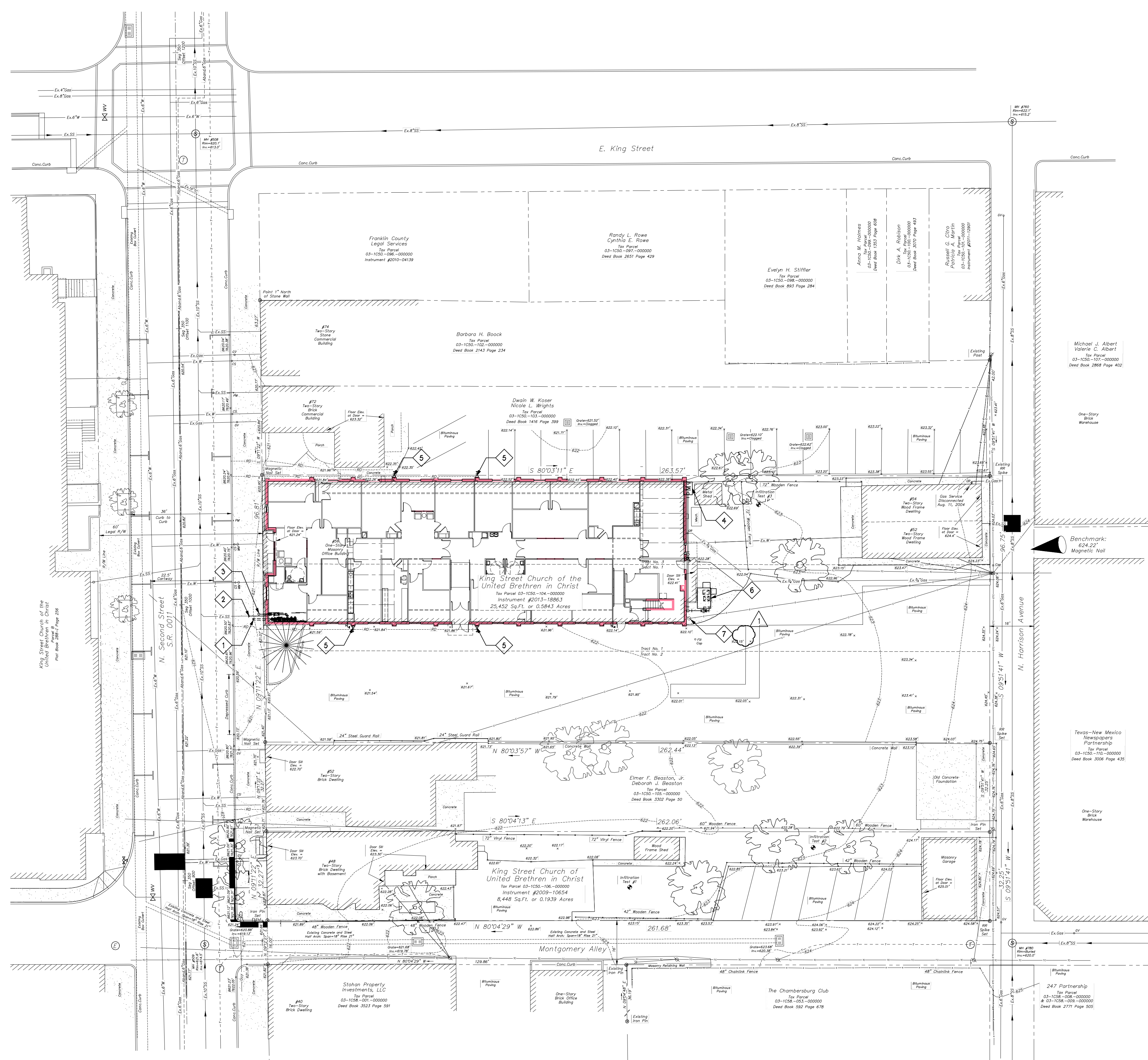
No:	Date:
1	05/29/16
Revisions Per Addendum #3	
No:	Date:
No:	Date:
No:	Date:
No:	Date:
No:	Date:
No:	Date:

UTILITIES GENERAL NOTES

- THESE DRAWINGS ARE DIAGRAMMATIC & INDICATE THE GENERAL INTENT OF THE WORK. PROVIDE COMPLETE UTILITY SYSTEMS PER APPLICABLE CODES. INCLUDE ALL REQUIRED COMPONENTS AND MATERIALS REQUIRED BY LOCAL UTILITIES. COORDINATE WITH LOCAL UTILITIES PRIOR TO STARTING WORK.
- PROVIDE COMPLETE AND WORKING UTILITY SYSTEMS PER SPECIFICATIONS AND ALL APPLICABLE CODES.
- PROVIDE CODE REQUIRED CLEARANCE FOR ALL CLEAN-OUTS INSTALLED IN STORMWATER, WASTE, AND VENT PIPING.
- MINIMUM UNDERGROUND WASTE OR STORM PIPE SIZE SHALL BE 3", MINIMUM UNDERGROUND CONDENSATE WASTE SHALL BE 2".
- CONTRACTORS ARE TO REVIEW ALL CONSTRUCTION DOCUMENTS AND APPLY DRAWING DETAILS TYPICALLY THROUGHOUT.
- FIRE PROTECTION CONTRACTOR SHALL PERFORM A WATER FLOW AND PRESSURE TEST PRIOR TO FIRE PROTECTION SPRINKLER SYSTEM DESIGN. REFER TO SPECIFICATIONS FOR SYSTEM REQUIREMENTS.
- WATER PIPE (FIRE SPRINKLER, COLD WATER ETC.) SHALL BE BURIED WITH NOT LESS THAN 4'-0" COVER. IF EXTREME FROST DEPTH EXCEEDS 3'-6" BURY PIPE 6" BELOW EXTREME FROST DEPTH.
- GAS PIPE SHALL BE BURIED WITH NOT LESS THAN 1'-6" OF COVER.
- BURIED ELECTRICAL CONDUCTORS SHALL BE INSTALLED IN CONDUIT UNLESS CONTRACTOR HAS WRITTEN PERMISSION FROM ARCHITECT/ENGINEER. BURIED CONDUIT/CONDUCTORS SHALL BE BURIED WITH NOT LESS THAN 2'-0" OF COVER.
- WATER HYDRANTS AND HOSE BIBS SHALL NOT BE SUPPLIED FROM THE IRRIGATION SYSTEM.
- GAS PIPING SHALL MAINTAIN 6" OF SEPARATION FROM ANY OTHER UNDERGROUND SERVICE PIPE. GAS PIPING SHALL MAINTAIN 12" OF SEPARATION FROM ANY UNDERGROUND ELECTRICAL CONDUCTOR OR CONDUIT INCLUDING LOW VOLTAGE CONDUCTORS SUCH AS UNDERGROUND CABLE TV OR TELEPHONE.
- ALL INVERT DEPTHS ARE GIVEN WITH RESPECT TO BASEMENT FINISHED FLOOR ELEVATION. BASEMENT FINISHED FLOOR ELEVATION IS ASSUMED TO BE 100.00'. FOR BASEMENT FINISHED FLOOR ELEVATION WITH RESPECT TO SEA LEVEL, REFERENCE CIVIL PLANS.

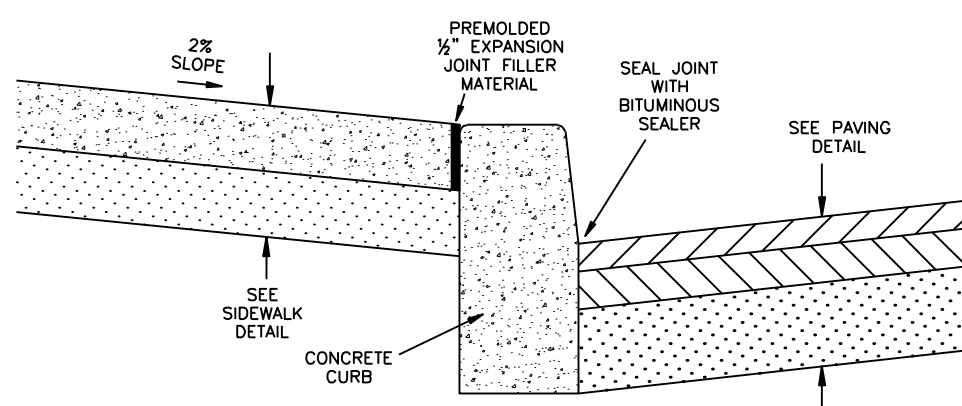
SHEET KEYED NOTES

- NEW 6" COMBINATION FIRE PROTECTION AND DOMESTIC SUPPLY ENTRY.
- EXISTING 3" SANITARY BUILDING EXIT TO BE REUSED.
- FIRE DEPARTMENT 5" STORTZ CONNECTION. COORDINATE REQUIREMENTS WITH A.H.J.
- INSTALL NEW NATURAL GAS METER. FIELD VERIFY EXISTING NATURAL GAS POINT OF CONNECTION. COORDINATE REQUIREMENTS WITH A.H.J.
- CONNECT NEW DOWNSPOUT TO EXISTING TRANSITION TO EXISTING UNDERGROUND STORM WATER COLLECTION SYSTEM.
- NEW EXTERIOR MECHANICAL UNIT. REFER TO MECHANICAL PLANS.
- INSTALL NEW ELECTRICAL SERVICE BY EXTENDING EXISTING UNDERGROUND CONDUITS. REFER TO ADDITIONAL PLANS AND COORDINATE WITH LOCAL UTILITIES.



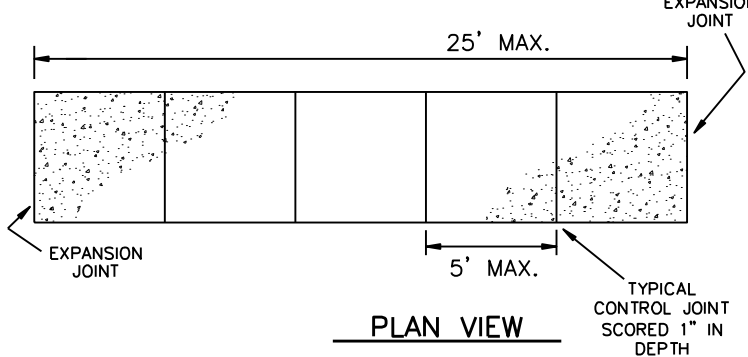
UTILITIES COORDINATION PLAN
 1" = 20'

TYPICAL CURB & SIDEWALK SECTION
NOT TO SCALE

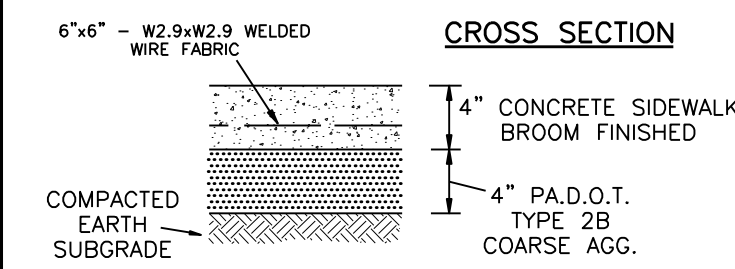


- NOTES:
- 1) ALL SIDEWALKS TO BE 3.0 FEET WIDE UNLESS OTHERWISE NOTED.
 - 2) ALL SIDEWALKS SHALL HAVE TROWEL CONTROL JOINTS ON 5.0 FEET SPACING AND 1/2" PREMOLDED EXPANSION JOINT FILLER MATERIAL PLACED AT 25.0 FEET SPACING MINIMUM.
 - 3) DETECTABLE WARNINGS ARE REQUIRED WHERE WALKS CROSS OR ADJOIN A VEHICULAR WAY AND ARE NOT SEPARATED BY A CURB OR OTHER ELEMENT IN ACCORDANCE WITH PENNDOT RC-67M.

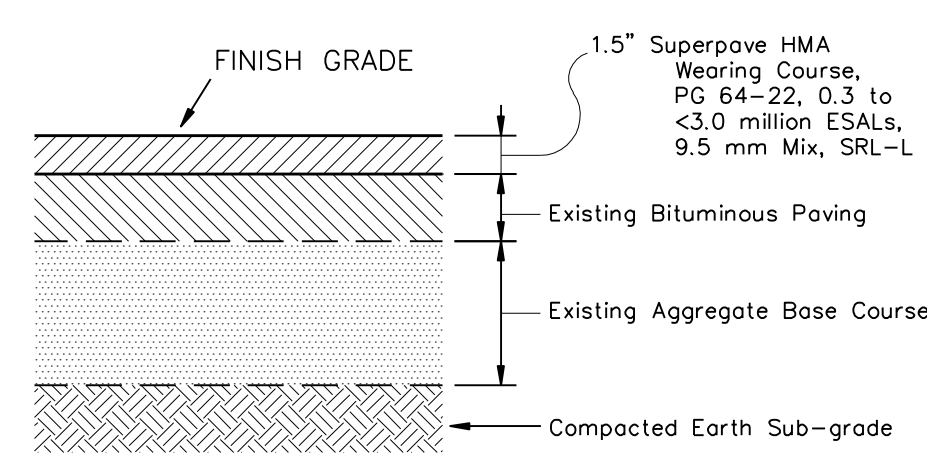
SIDEWALK DETAIL
NOT TO SCALE



CROSS SECTION



BITUMINOUS PAVING OVERLAY CROSS-SECTION
NOT TO SCALE



INSTALLATION OF BITUMINOUS PAVING SHALL BE IN ACCORDANCE WITH THE SPECIFICATIONS OUTLINED IN P.A.D.O.T. PUBLICATION 408 WITH RESPECT TO SECTION 400 - FLEXIBLE PAVEMENTS AND SECTION 700 - MATERIALS.

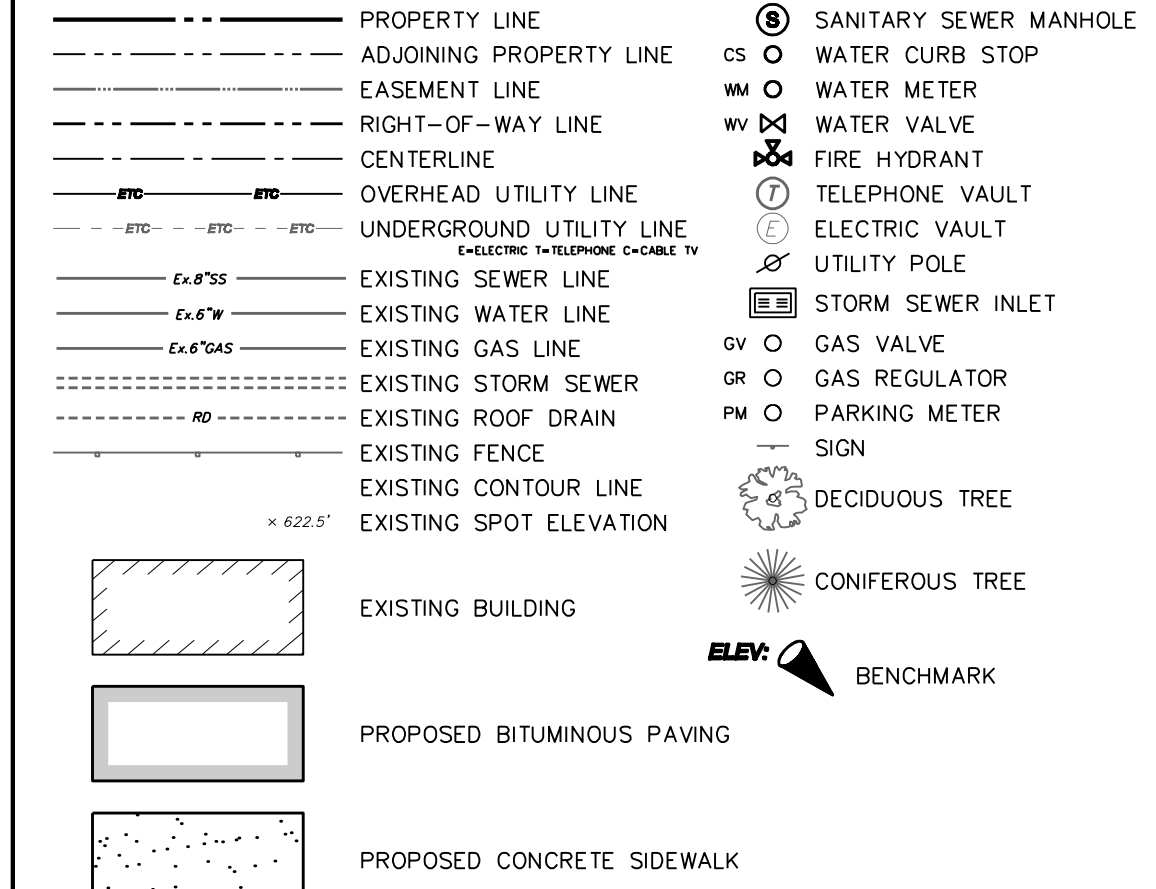
Work Key

- 1 Demolish portion of building (hatched area). Remove and dispose debris.
- 2 Remove and dispose concrete sidewalk (dotted area).
- 3 Remove and dispose concrete curb and replace with PennDOT RC-64M Plain Cement Concrete Curb after completion of utility work.
- 4 Saw cut.
- 5 Remove and dispose bituminous paving (shading) and restore pavement per PennDOT RC-30M after completion of utility work.
- 6 Coordinate removal of Temporary Service Pole, Meter, and Conductors with the Borough of Chambersburg Electric Department at the completion of the project.
- 7 Remove and dispose mechanical unit and ductwork.
- 8 Coordinate removal of telecommunication lines with CenturyLink and Comcast Cable.
- 9 Install cleanout and connect to existing sanitary sewer service lateral in accordance with Borough of Chambersburg Specifications.
- 10 Coordinate with Borough of Chambersburg Water and Sewer Department and connect and install 6"x6" Tapping Sleeve and Valve, 6" combination fire suppression and domestic water service lateral, and Leak Detection Meter per Borough of Chambersburg Specifications. Disconnect two water service laterals at the main per Borough Specifications.

Work Key

- 11 Coordinate with Borough of Chambersburg Gas Department for installation and connection to new Gas Meter - Regulator Set.
- 12 Connect new downspout to existing transition to existing underground storm water collection system.
- 13 Install new exterior mechanical unit. Refer to Mechanical Plans.
- 14 Remove existing pole and extend existing conduits. Coordinate installation of conductors and new electrical service with the Borough of Chambersburg Electric Department.
- 15 In accordance with Borough of Chambersburg Specifications, extend two (2) 4" diameter PVC conduits to new concrete riser at existing pole and include pull cords. Maintain 2" of separation between concrete riser and pole. The 2" separation is to be maintained for the full-depth of the riser both above and below grade.
- 16 Install new concrete sidewalk (dotted area).
- 17 Install new paving overlay (shading denotes limits).
- 18 Install new concrete wheel stop.
- 19 Install new 4" wide point striping.
- 20 Relocate wall-mounted ADA Accessible parking stall placards.
- 21 Stabilize all disturbed areas with permanent seeding.

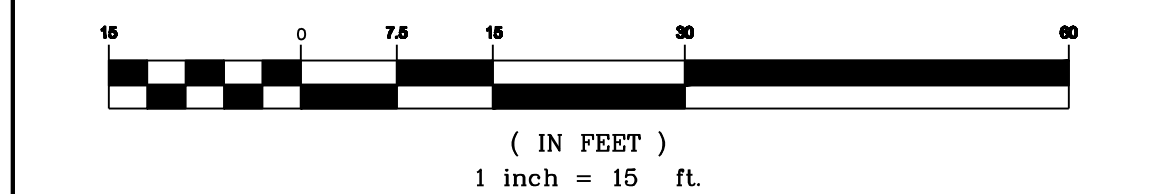
LEGEND



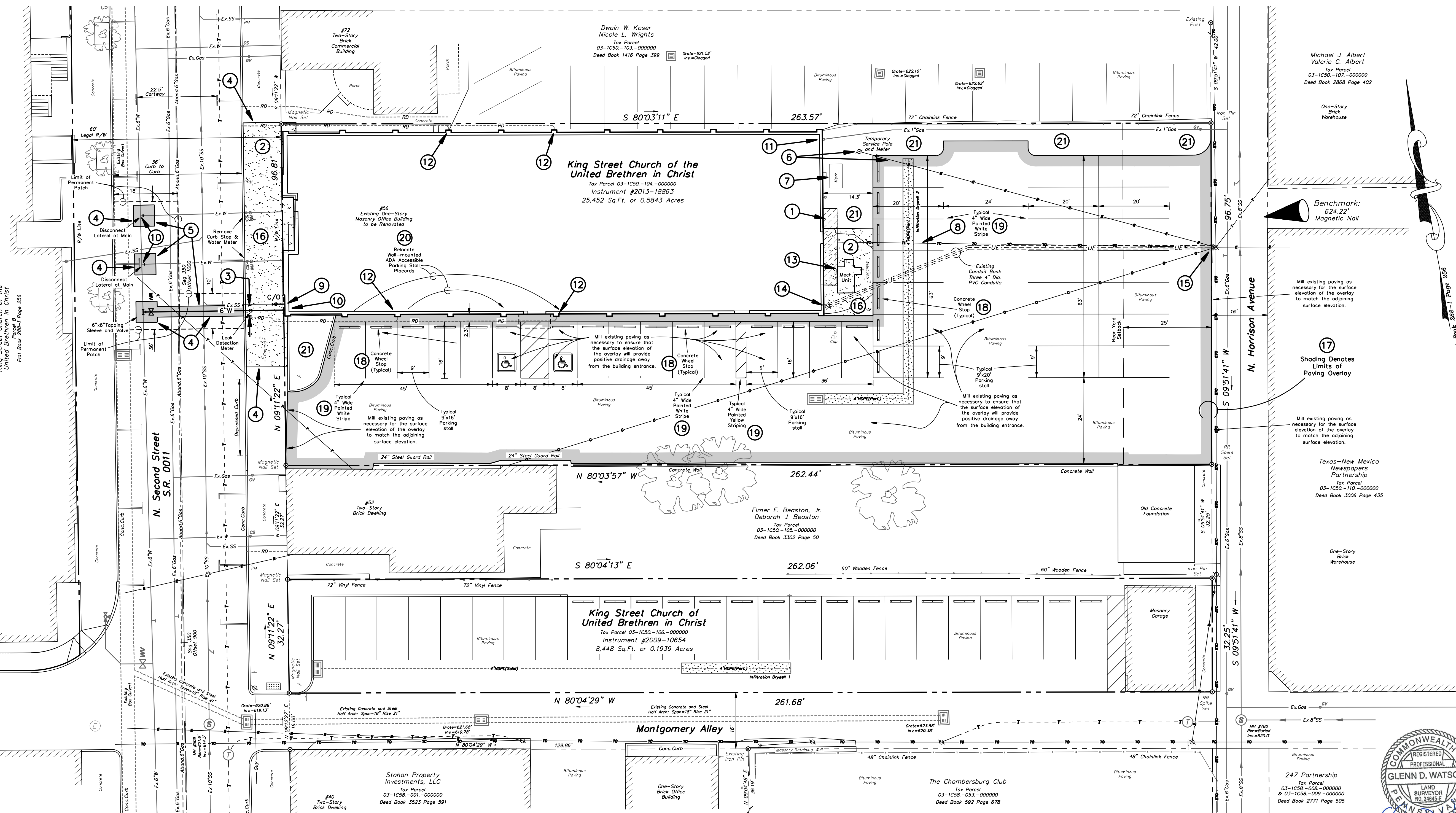
Notes:

1. The underground position of the utilities and drainage structures shown on this survey are approximate and are based on the surface location of the appurtenances (i.e.: inlets, hydrants, valves, manholes, etc.), construction plans, and as-built record drawings.

GRAPHIC SCALE



- Notes:
1. Owner/Applicant: King Street Church of the United Brethren in Christ
162 East King Street
Chambersburg, PA 17201
Contact: Kenneth L. Adams, Jr. (717) 264-4651
 2. The purpose of this plan is to provide for the modification of the utility connections to the existing building that is to be renovated at #56 North Second Street and for incidental modifications to existing site features. For the approved Land Development Plan refer to Chambersburg Borough Plan RE-1409 entitled "Preliminary/Final Land Development Plan for King Street Church of the United Brethren in Christ" prepared by Dennis E. Black Engineering, Inc. dated January 13, 2014, last revised May 5, 2014, and recorded May 29, 2014 as Franklin County Instrument #2014-09142.
 3. The properties shown on this plan are #48 and #56 North Second Street. #48 North Second Street being the land conveyed to King Street Church of the United Brethren in Christ by deed dated May 7, 2009 and recorded as Franklin County Instrument #2009-10654. #56 North Second Street being the land conveyed to King Street Church of the United Brethren in Christ by deed dated August 22, 2013 and recorded as Franklin County Instrument #2013-18863.
 4. Project Areas:
#48 North Second Street = 8,448 Sq.Ft. or 0.1939 Acres
#56 North Second Street = 25,452 Sq.Ft. or 0.5843 Acres
 5. Existing Zoning: Central Core - CC.
 6. Existing Uses:
#48 North Second Street = Parking Area for King Street Church of the United Brethren in Christ.
#56 North Second Street = Professional and Business Office.
 7. Proposed Uses:
#48 North Second Street = Parking Area for King Street Church of the United Brethren in Christ.
#56 North Second Street = Professional and Business Offices for King Street Church of the United Brethren in Christ.
 8. Minimum Building Setback Requirements:
Front = 0', Side = 0', Rear = 25'.
 9. Maximum Allowable Building Height = Six Stories or 72 feet.
 10. Off-Street Parking Requirements:
None.
Parking Stalls Provided:
#48 North Second Street = 25 Stalls
#56 North Second Street = 37 Stalls
Total = 62 stalls
 11. These properties are served by the Borough of Chambersburg Public Water and Sanitary Sewer Systems. Water and Sanitary Sewer Service Line disconnections shall be performed in accordance with the prevailing Borough of Chambersburg Standards and Specifications.
 12. Concrete curb and sidewalk construction within the street rights-of-way shall be constructed in accordance with the Borough of Chambersburg Standards and Specifications.



Site and Utility Plan
for
King Street Church Of the United Brethren In Christ
located in
Borough Of Chambersburg, Franklin County, PA

DENNIS E. BLACK ENGINEERING, INCORPORATED
ENGINEERING - SURVEYING - PLANNING
2400 PHILADELPHIA AVENUE 222 NORTH SECOND STREET
CHAMBERSBURG, PA 17201 McCONNELLSBURG, PA 17233
(717)263-8794 (888)238-0661 (717)485-4028

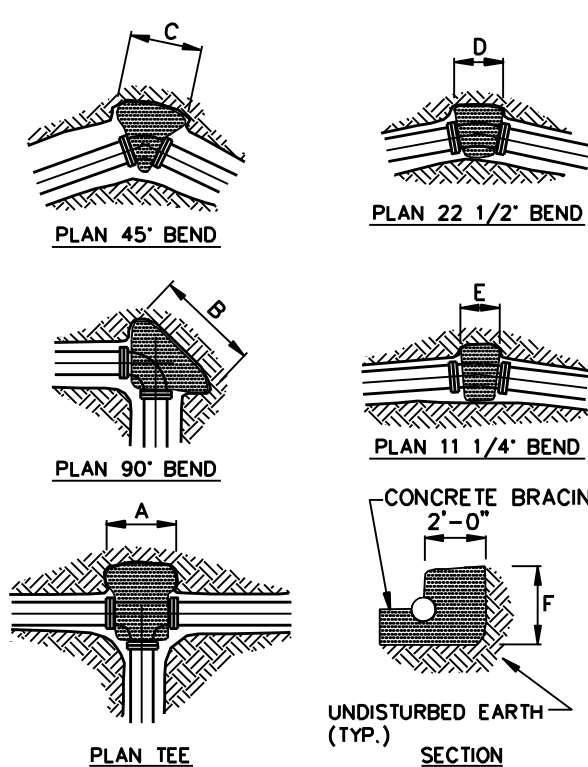
CLIENT No. 4215 ORDER No. 6779 SHEET 1 OF 2
DATE 2/20/2016 AutoCAD DRAWING REF. NUMBER
SCALE 1"=15' AutoCAD# 16-14

THE ORIGINAL DRAWING AND THE INFORMATION SHOWN THEREON ARE THE PROPERTY OF D. E. BLACK ENG., INC. AND SHALL NOT BE DUPLICATED WITHOUT WRITTEN PERMISSION

FILE: \\land\Projects\2013\6778 - Utility\Sheet\6778 - S-SiteandUtilityPlan.dwg LAYOUT: SheetUtilityPlan.dwg BY: Glenn Watson ON: 3/30/2016 8:37 AM

STABILIZATION SPECIFICATIONS

- PERMANENT STABILIZATION IS DEFINED AS A MINIMUM UNIFORM 70% PERENNIAL VEGETATIVE COVER OR OTHER PERMANENT NON-VEGETATIVE COVER WITH A DENSITY SUFFICIENT TO RESIST ACCELERATED SURFACE EROSION AND SUBSURFACE CHARACTERISTICS SUFFICIENT TO RESIST SLIDING AND OTHER MOVEMENTS.
- IMMEDIATELY AFTER EARTH DISTURBANCE ACTIVITIES CEASE, THE OPERATOR SHALL STABILIZE THE DISTURBED AREAS. DURING NON-GERMINATING PERIODS, MULCH MUST BE APPLIED AT THE SPECIFIED RATES. DISTURBED AREAS WHICH ARE NOT AT FINISHED GRADE AND WHICH WILL BE RE-DISTURBED WITHIN 1 YEAR MUST BE STABILIZED IN ACCORDANCE WITH THE TEMPORARY VEGETATIVE STABILIZATION SPECIFICATIONS. DISTURBED AREAS WHICH ARE AT FINAL GRADE OR WHICH WILL NOT BE RE-DISTURBED WITHIN 1 YEAR MUST BE STABILIZED IN ACCORDANCE WITH THE PERMANENT VEGETATIVE STABILIZATION SPECIFICATIONS.
- AN EROSION CONTROL BLANKET WILL BE INSTALLED ON ALL DISTURBED SLOPES STEEPER THAN 3:1. ALL AREAS OF CONCENTRATED FLOWS, AND DISTURBED AREAS WITHIN 50' OF WATERS OF THE COMMONWEALTH.
- STRAW AND HAY MULCH SHOULD BE ANCHORED IMMEDIATELY AFTER APPLICATION TO PREVENT BEING WIND-BLOWN. A TRACTOR-DRAWN IMPLEMENT MAY BE USED TO "CRIMP" THE STRAW OR HAY INTO THE SOIL. THIS METHOD IS LIMITED TO SLOPES NO STEEPER THAN 3:1. THE MACHINERY SHOULD BE OPERATED ON THE CONTOUR OF HAY OR STRAW BY RUNNING OVER IT WITH TRACKED MACHINERY IS NOT RECOMMENDED. A WOOD CELLULOSE FIBER MAY BE SPREAD OVER THE STRAW MULCH AT A RATE OF 1,500 LB./ACRE.
- TRACING SLOPES IS REQUIRED BY RUNNING TRACKED MACHINERY UP AND DOWN THE SLOPE, LEAVING TREAD MARKS PARALLEL TO THE CONTOUR. IF A BULLDOZER IS USED, THE BLADE SHALL BE IN THE UP POSITION. CARE SHALL BE EXERCISED ON SOILS HAVING A HIGH CLAY CONTENT TO AVOID OVER-COMPACTION.
- TOPSOIL SHALL BE PLACED AT A MINIMUM DEPTH OF 6 INCHES ON ALL DISTURBED AREAS TO BE REVEGETATED.



NOTE: PROVIDE PLASTIC COVERING TO PROTECT PIPE JOINTS FROM CONCRETE.

DESIGN PRESSURE	PIPE DIAMETER	REACTION BACKING DIMENSIONS				
		A	B	C	D	E
150 PSI	16	3'-0"	2'-3"	4'-2"	1'-2"	1'-4"
	12	4'-2"	2'-11"	3'-3"	1'-8"	2'-6"
	8	5'-0"	2'-3"	2'-4"	1'-2"	1'-8"
	6	2'-5"	3'-4"	1'-10"	0'-11"	1'-3"
200 PSI	16	7'-3"	10'-3"	5'-7"	2'-10"	1'-6"
	12	8'-7"	11'-1"	4'-3"	2'-2"	1'-2"
	8	4'-0"	5'-7"	3'-1"	1'-2"	0'-10"
	6	3'-1"	2'-5"	2'-5"	1'-3"	0'-8"
250 PSI	16	9'-3"	13'-3"	7'-11"	3'-8"	2'-3"
	12	6'-4"	8'-11"	5'-4"	3'-5"	1'-9"
	8	5'-0"	5'-11"	3'-10"	1'-11"	1'-8"
	6	3'-0"	5'-8"	3'-9"	1'-10"	1'-3"

REACTION BACKING NOT TO SCALE

PERMANENT SEEDING

- ALL DISTURBED AREAS THAT ARE NOT TO BE PAVED SHALL BE COVERED WITH PERMANENT TURF LAWN SEEDING, VEGETATED SWALE, VEGETATED FILTER STRIP, BIO-RETENTION POND FLOOR SEEDING, OR A MULCHED PLANTING BED (SHREDDED HARDWOOD TREE BARK MULCH) TO MINIMIZE EROSION, UNLESS OTHERWISE DIRECTED BY THE OWNER.
- HAY OR STRAW MULCHING SHALL BE USED TO PROTECT PERMANENT SEEDING AND HELP IN THE PREVENTION OF ACCELERATED RUN-OFF. CLEAN HAY OR STRAW MULCHING SHALL BE REQUIRED ON ALL DISTURBED AREAS AND APPLIED AT A RATE OF 3 TONS PER ACRE (EQUIVALENT TO 0.75" TO 1" DEEP). AN EMULSIFIED ASPHALT TACK BINDING ANCHORING MATERIAL SHALL BE APPLIED TO THE HAY OR STRAW MULCHING AT A RATE OF 150 GALLONS/ACRES. CLEAN HAY OR STRAW MULCHING SHALL NOT BE FINELY CHOPPED OR BROKEN DURING THE APPLICATION.
- THE FOLLOWING MIXTURES ARE TO BE USED:

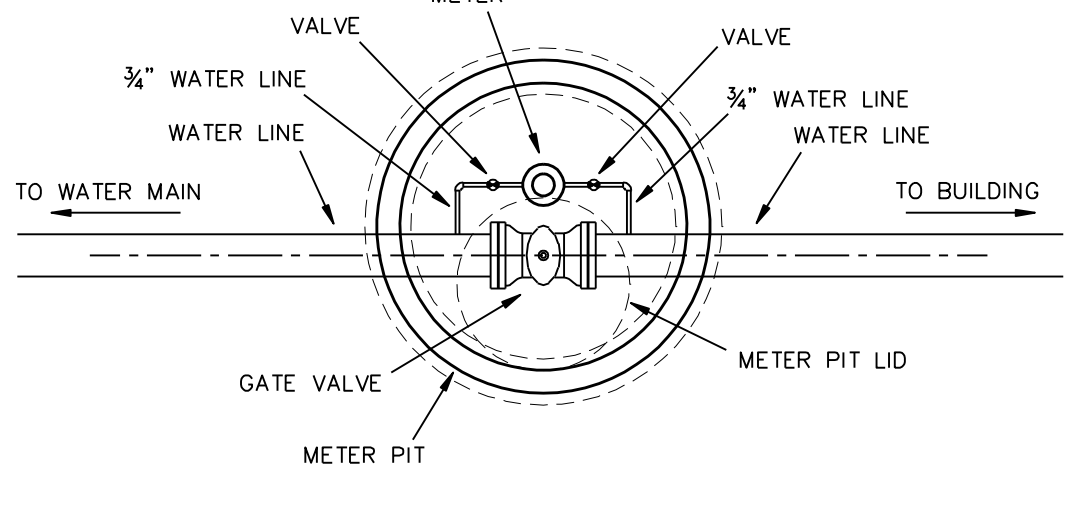
PERMANENT TURF LAWN: SPECIES: % PURE LIVE SEED	APPLICATION RATE	SEEDING DATES
WINTER RYE 100	56 LBS/ACRE	MAR 1 TO JUN 1 OR AUG 1 TO OCT 1
KY BLUEGRASS 100	25 LBS/ACRE	MAR 1 TO JUN 1 OR AUG 1 TO OCT 1
REEDTOP 100	3 LBS/ACRE	MAR 1 TO JUN 1 OR AUG 1 TO OCT 1
- MULCHED PLANTING BED:

SHREDDED HARDWOOD	APPLICATION DEPTH	APPLICATION DATES
TREE BARK MULCH	4 INCHES	MAR 1 TO NOV 31
- IN THE ABSENCE OF SOIL TEST RESULTS, 5-10-10 FERTILIZER AT A RATE OF 2,000 LBS/ACRE, SHALL BE APPLIED WITH THE PERMANENT SEEDING.
- IN THE ABSENCE OF SOIL TEST RESULTS, AGRICULTURAL-GRADE LIME AT A RATE OF 6 TONS/ACRE, SHALL BE APPLIED WITH THE PERMANENT SEEDING.

TEMPORARY SEEDING

- IN ORDER TO ESTABLISH A QUICK VEGETATIVE COVER OVER DISTURBED AREAS, THE FOLLOWING TEMPORARY SEED MIXTURE SHALL BE USED.
- STABILIZATION EFFORTS DURING THE NON-GERMINATING PERIOD OF OCTOBER 15 TO MARCH 15 SHALL CONSIST OF HAY OR STRAW MULCHING APPLIED AT A RATE OF 3 TONS PER ACRE (EQUIVALENT TO 0.75" TO 1" DEEP). THE CLEAN HAY OR STRAW MULCHING SHALL NOT BE FINELY CHOPPED OR BROKEN DURING THE APPLICATION.
- THE FOLLOWING MIXTURE IS TO BE USED:

TEMPORARY SEEDING: SPECIES: % PURE LIVE SEED	APPLICATION RATE	SEEDING DATES
ANNUAL RYEGRASS 100	40 LBS/ACRE	ANYTIME
- IN THE ABSENCE OF SOIL TEST RESULTS, 10-10-10 FERTILIZER AT A RATE OF 500 LBS/ACRE, SHALL BE APPLIED WITH THE TEMPORARY SEEDING.
- IN THE ABSENCE OF SOIL TEST RESULTS, AGRICULTURAL-GRADE LIME AT A RATE OF 1 TON/ACRE, SHALL BE APPLIED WITH THE TEMPORARY SEEDING.



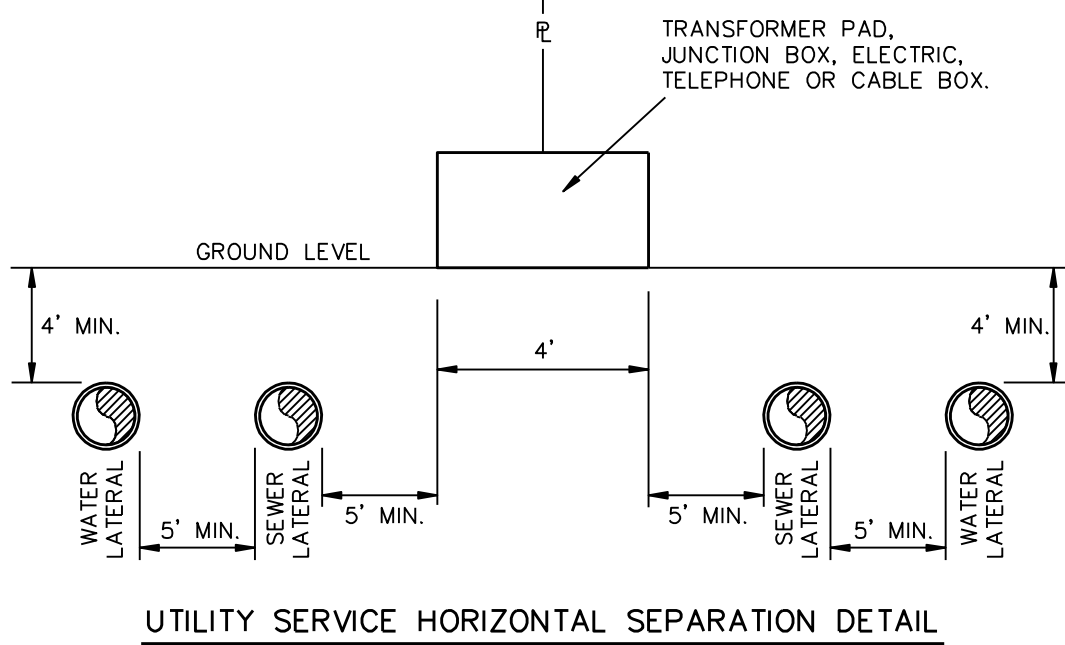
- LINES OVER 75' IN LENGTH FROM MAIN TO BUILDING MUST USE A PIT AND METER INSTALLED AS CLOSE TO MAIN AS FIELD CONDITIONS WILL ALLOW.

LEAK DETECTION METER
BOROUGH OF CHAMBERSBURG

DRAWN BY: BKF
CHK BY:
DATE: MARCH 2003
DWG NO. CHBG-W-148

NOTE: ALL WATER SERVICES AND SEWER LATERALS SHALL BE LOCATED A MINIMUM OF 5' AWAY FROM THE ELECTRIC, TELEPHONE, CABLE OR ANY OTHER UTILITY APPURTENANCE.

NOTE: ALL WATER SERVICES AND SEWER LATERALS SHALL BE EXTENDED A MINIMUM OF 5' BEYOND ALL OTHER UTILITIES.



UTILITY SERVICE HORIZONTAL SEPARATION DETAIL NOT TO SCALE

- EACH RESIDENTIAL UNIT SHALL HAVE A SEPARATE SEWER AND WATER SERVICE PER UNIT.
- EACH SEWER AND WATER SERVICE SHALL HAVE A MINIMUM OF 5' HORIZONTAL SEPARATION.
- THE SEWER MAIN AND WATER MAIN SHALL HAVE AT LEAST 10' HORIZONTAL SEPARATION.
- ELECTRIC VALVES AND PEDESTALS SHALL HAVE 5' HORIZONTAL SEPARATION FROM THE SEWER AND WATER SERVICES.

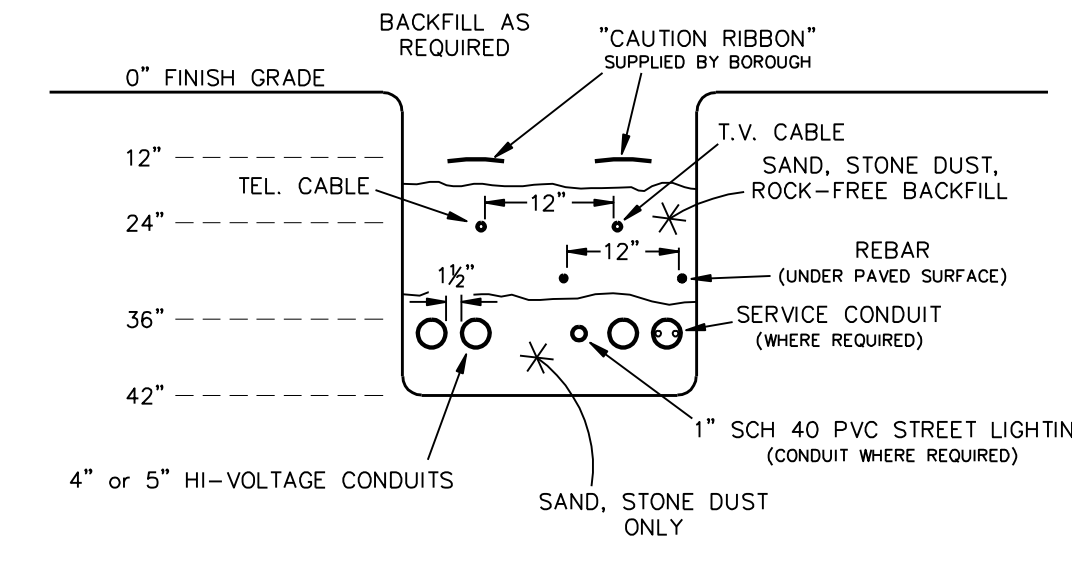
UTILITY SERVICE PLACEMENT
BOROUGH OF CHAMBERSBURG

DRAWN BY: BKF
CHK BY: ES
DATE: MARCH 2003
DWG NO. CHBG-W-15

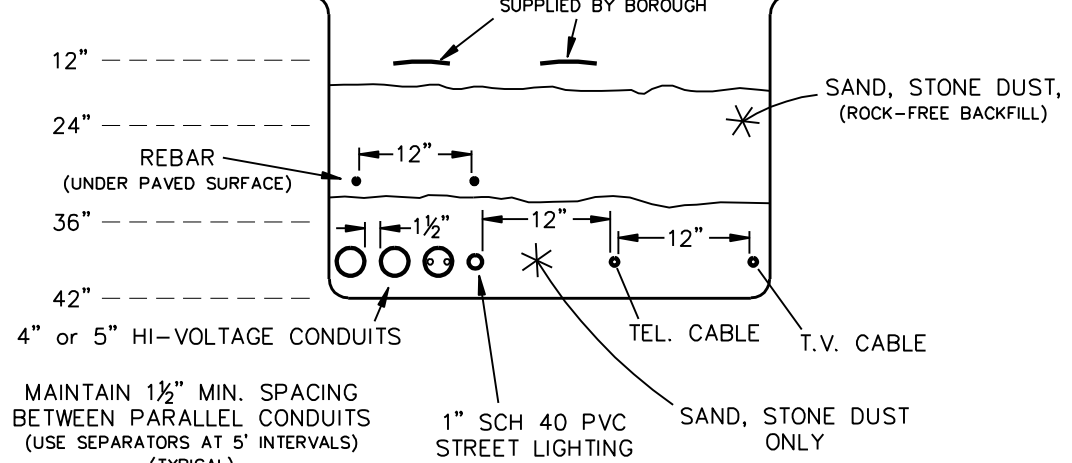
TAPPING SLEEVE & VALVE
BOROUGH OF CHAMBERSBURG

DRAWN BY: BKF
CHK BY:
DATE: MARCH 2003
DWG NO. CHBG-W-108

RESIDENTIAL AND COMMERCIAL CONDUIT AND TRENCH REQUIREMENTS

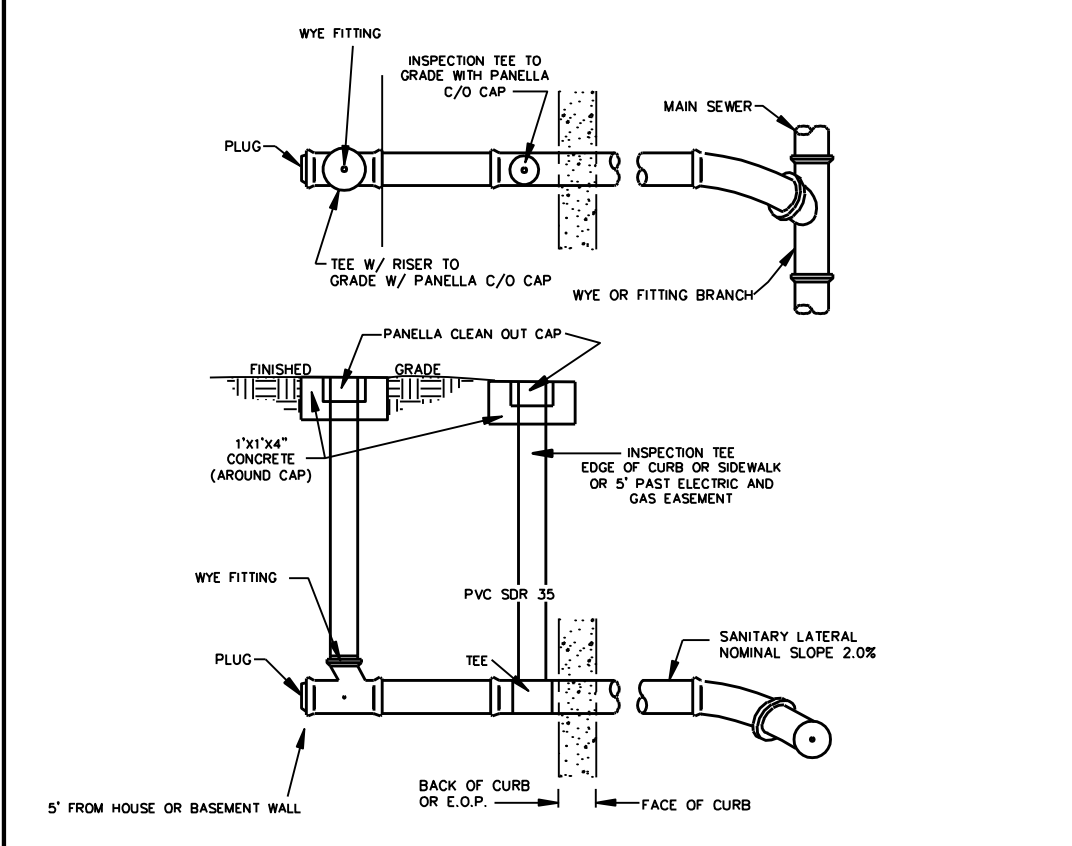


ALTERNATE TRENCH



CONDUIT & TRENCH DETAIL
BOROUGH OF CHAMBERSBURG

DRAWN BY: BKF
CHK BY:
DATE: MARCH 2003
DWG NO. CHBG-TH-1



SANITARY LATERAL SHALLOW SEWER DETAIL 1' TO 15' DEPTH NOT TO SCALE

NOTE: INSTALL C/O EVERY 100'

SANITARY LATERAL-SHALLOW SEWER
BOROUGH OF CHAMBERSBURG

DRAWN BY: BKF
CHK BY:
DATE: MARCH 2003
DWG NO. CHBG-S10

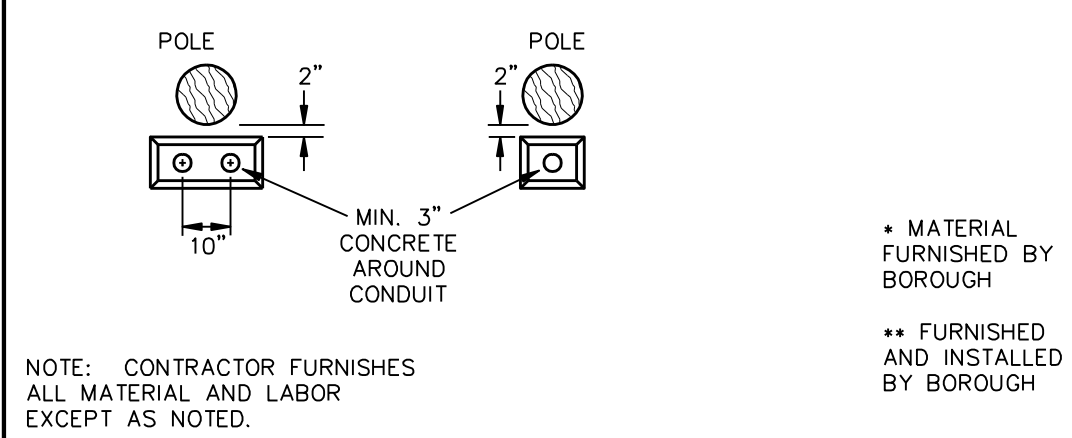
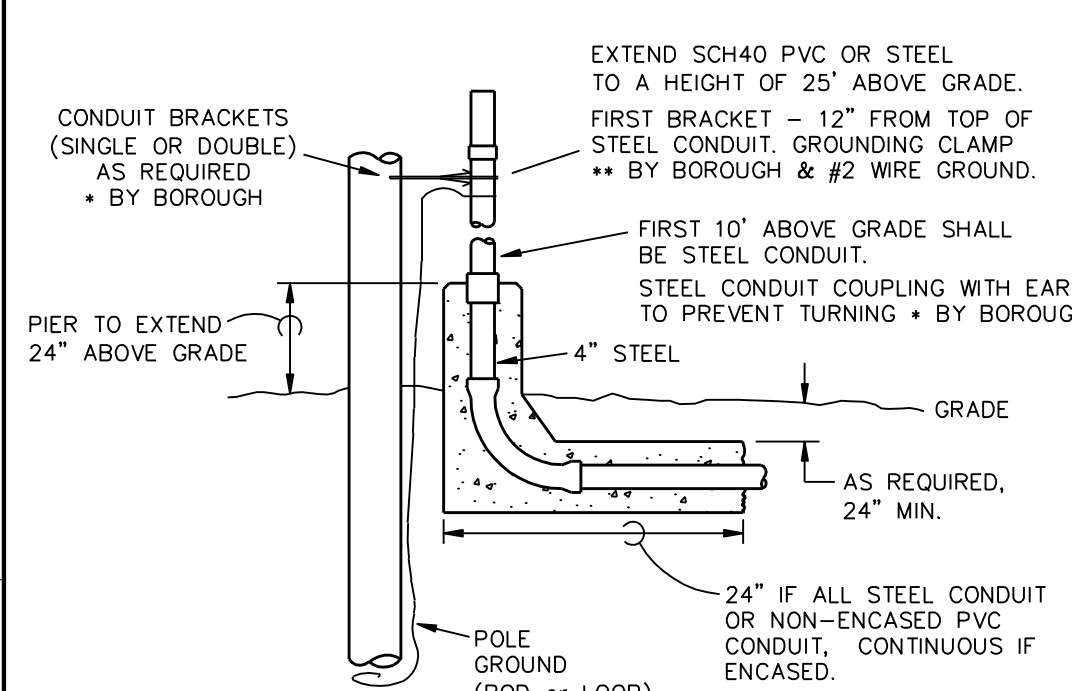
GENERAL INSTRUCTIONS FOR INSTALLING UNDERGROUND ELECTRIC FACILITIES IN DEVELOPMENTS

- PROTECT TRENCHES FROM CAVE-INS.
- BE SURE BOTTOM OF TRENCH IS FREE OF IRREGULARITIES FOLLOWING THE ADDITION OF STONE DUST PRIOR TO LAYING CONDUIT. NO HILLS AND VALLEYS, ROCKS, ETC.
- CEMENT ALL CONDUIT JOINTS.
- CAP ENDS OF CONDUIT AT THE END OF EACH WORK DAY TO PREVENT MUD AND DEBRIS FROM ENTERING.
- DO NOT OVER STRESS CEMENTED JOINTS BY BENDING BEFORE CEMENT HAS SET (BENDS AT JOINTS CAUSE WIRE PULLING DEVICES TO HANG-UP ON EDGES).
- USE CONDUIT BENDER FOR BENDS THAT WOULD CAUSE MORE THAN FLEXING OF CONDUIT SECTIONS.
- USING A COMPRESSOR, INSTALLER MUST BLOW BOROUGH SUPPLIED SPONGE THROUGH EACH CONDUIT PRIOR TO ACCEPTANCE. (THIS WILL VERIFY THAT THE CONDUIT IS CLEAN AND EDGES ARE PROPERLY ALIGNED. CONDUITS SHOWING MUD, ETC. MUST BE FLUSHED OR SWABBED UNTIL CLEAN) BOROUGH SUPPLIED STRING TO REMAIN IN CONDUIT.
- A GLUE-ON CAP SHALL BE INSTALLED ON EACH END FOLLOWING ACCEPTANCE.
- DIRECT BURIED CABLES MUST BE LAID IN 6" MINIMUM STONE DUST OR SAND AND BE COVERED WITH SIMILAR MATERIAL.
- CONCRETE PADS SHALL BE PLACED ON TAMPED BACKFILL TO REDUCE SETTLING. SETTLED PADS SHALL BE CORRECTED AT SUBDIVIDERS/CONTRACTOR'S EXPENSE FOR A PERIOD OF 2 YEARS AFTER DATE OF ACCEPTANCE IN ACCORDANCE WITH THE PUBLIC WORKS MAINTENANCE BOND. OTHER CONDUIT SYSTEMS DAMAGE CAUSED BY THIS OR OTHER SHALL LIKEWISE BE CORRECTED.

INSTALLING UNDERGROUND ELECTRIC
BOROUGH OF CHAMBERSBURG

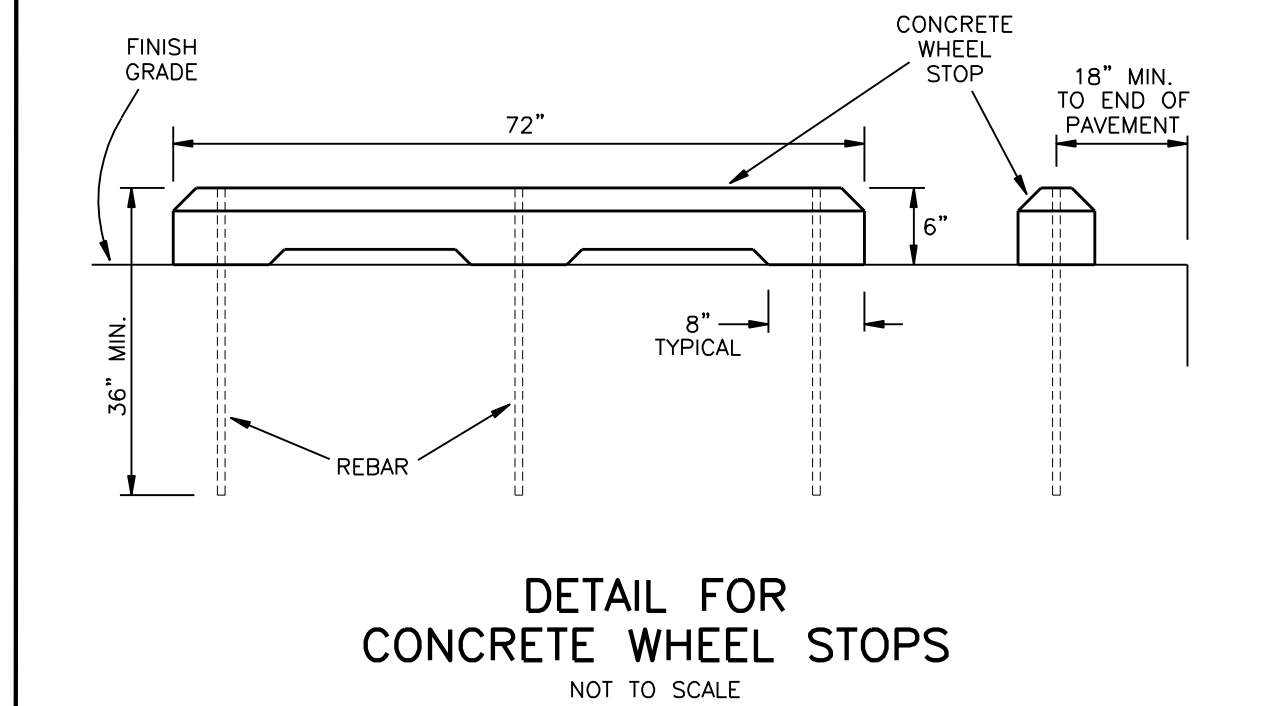
DRAWN BY: BKF
CHK BY:
DATE: MARCH 2003
DWG NO. CHBG-C1-1

UNDERGROUND CONSTRUCTION SPECIFICATION RISER POLE & CONCRETE PIER



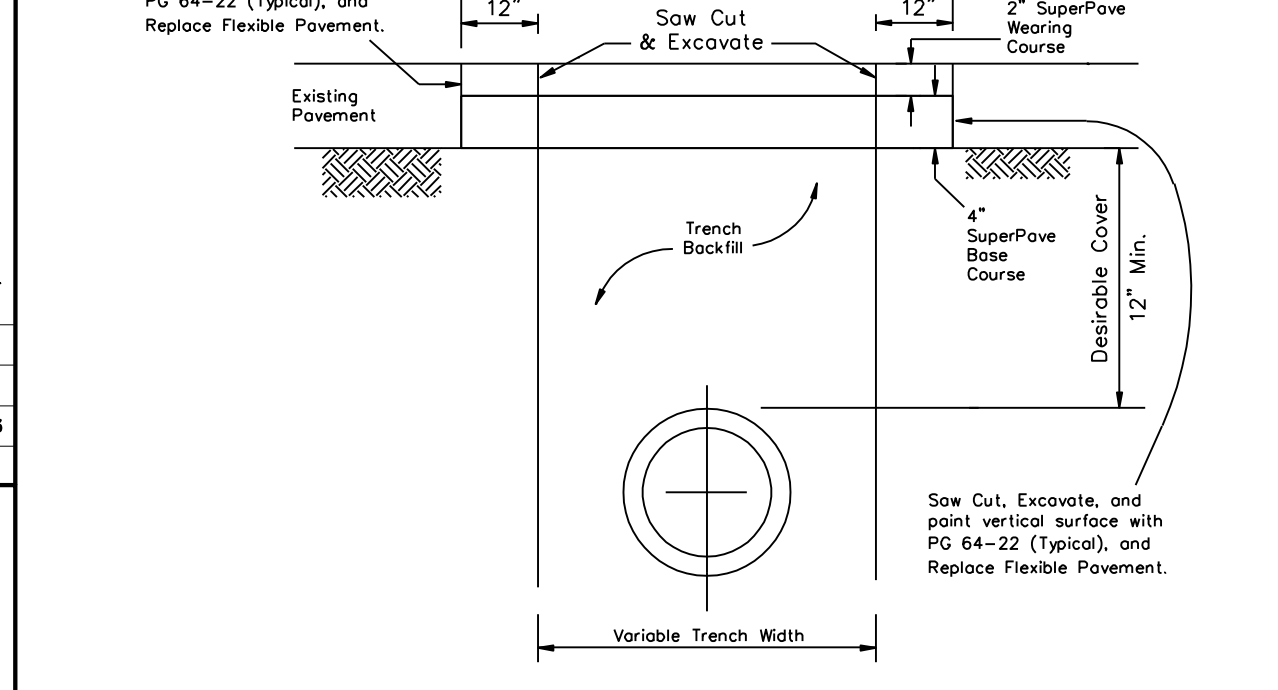
RISER POLE & CONCRETE PIER
BOROUGH OF CHAMBERSBURG

DRAWN BY: BKF
CHK BY:
DATE: MARCH 2003
DWG NO. CHBG-R-1



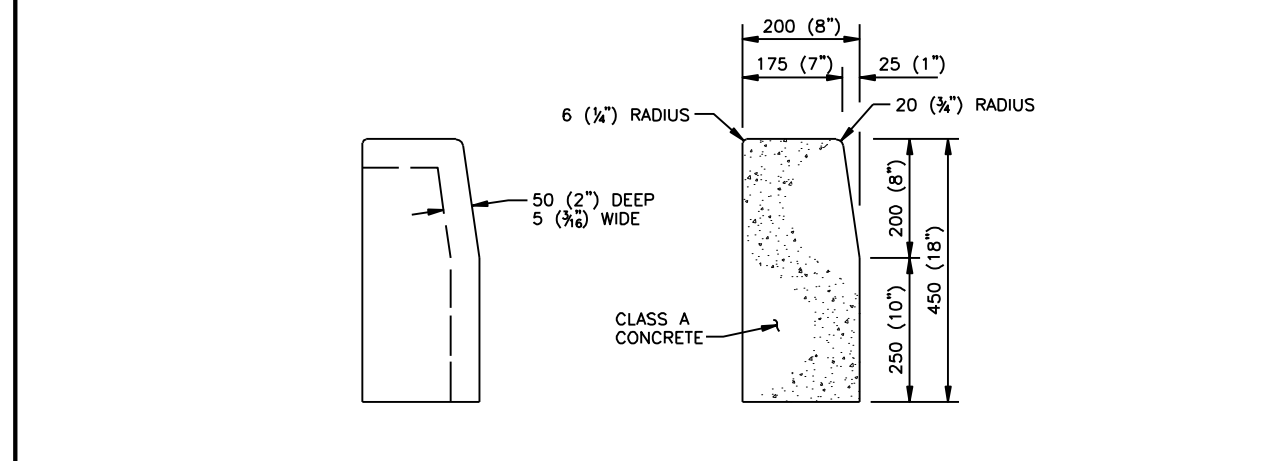
DETAIL FOR CONCRETE WHEEL STOPS NOT TO SCALE

Restoration of Pavement Over Pipe
PennDOT RC-30M



Proposed Paving Section:
2.0" Superpave HMA Wearing Course, PG 64-22,
0.3 to <3.0 million ESALS, 9.5 mm Mix, SRL-H
4.0" Superpave HMA Base Course, PG 64-22,
0.3 to <3.0 million ESALS, 25.0 mm Mix

PENNDOT RC-64M PLAIN CEMENT CONCRETE CURB

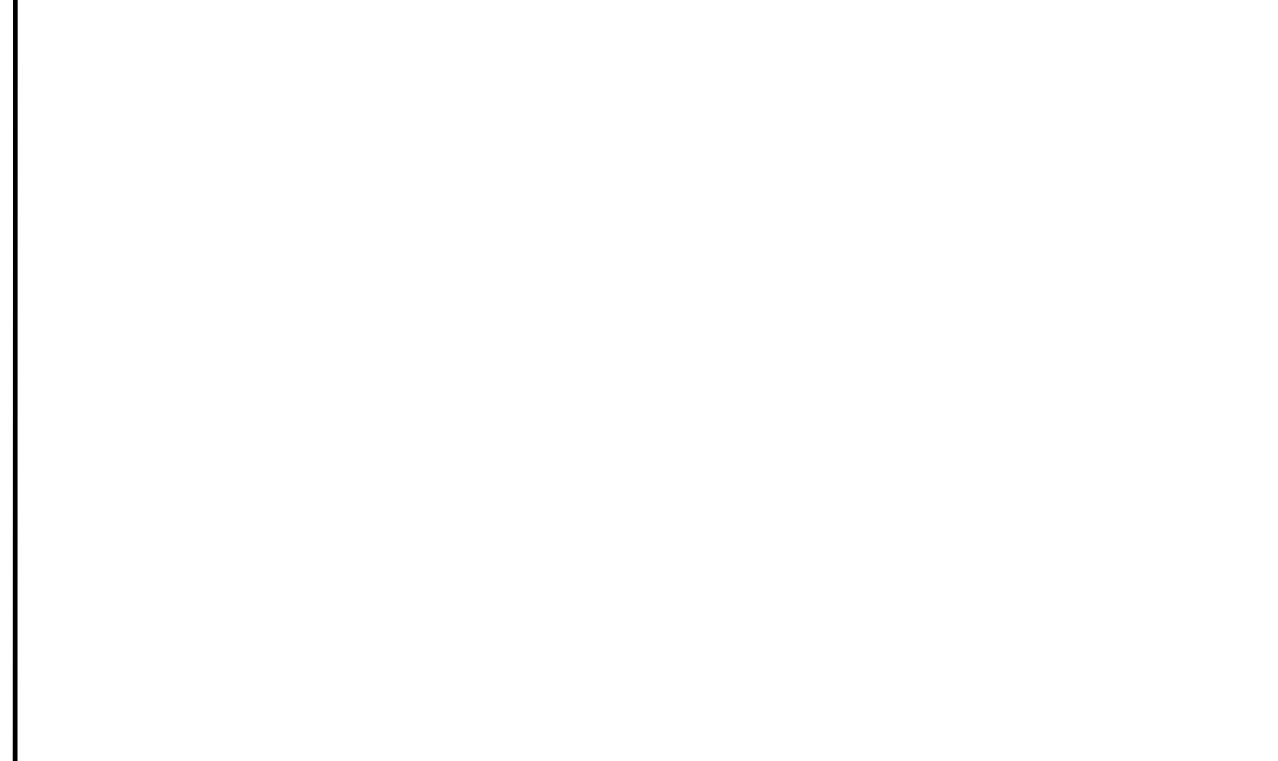


DETAIL A CONTRACTION JOINT TYPICAL CROSS SECTION

NOTES

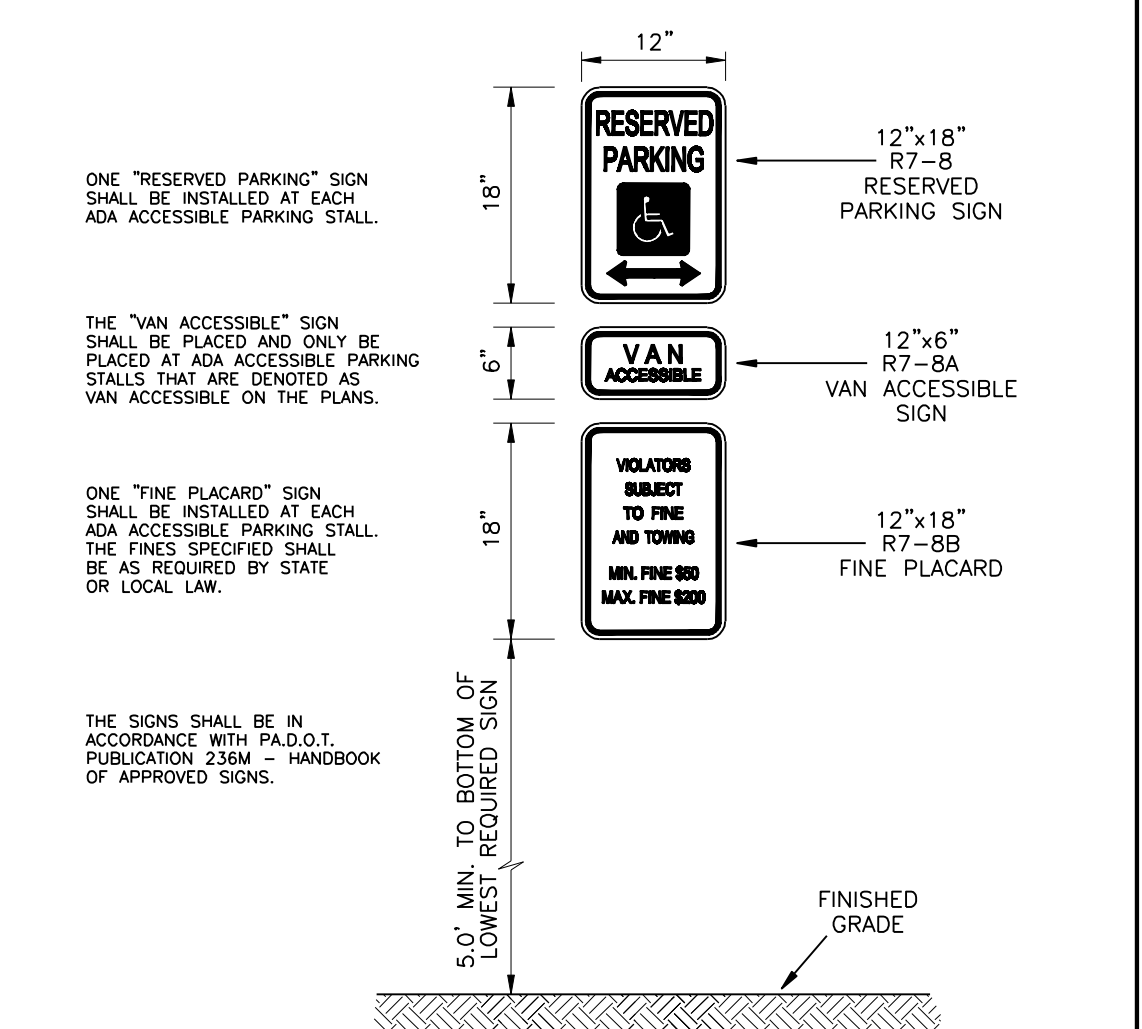
- PROVIDE MATERIALS AND CONSTRUCTION MEETING THE REQUIREMENTS OF PENNDOT PUBLICATION 408/2000, SECTION 630 FOR PLAIN CEMENT CONCRETE CURB AND DERESSED CURB. SECTION 640 FOR PLAIN CEMENT CONCRETE GUTTER AND SECTION 641 FOR PLAIN CEMENT CONCRETE CURB OUTER.
- SPACE CONTRACTION JOINTS IN UNIFORM LENGTHS OR SECTIONS.
- PLACE 20 (8") THICK PREMIXED EXPANSION JOINT FILLER MATERIAL AT STRUCTURES AND AT THE END OF THE WORK DAY. CUT MATERIAL TO CONFORM TO AREA ADJACENT TO CURB OR TO CONFORM TO CROSS SECTIONAL AREA OF CURB.
- SEE RC-50M FOR PLAIN CEMENT CONCRETE CURB SLOPED TOP TREATMENT AT END OF STRUCTURES.
- ALL DIMENSIONS ARE IN MILLIMETERS UNLESS OTHERWISE NOTED. U.S. CUSTOMARY UNITS IN () PARENTHESES.

PLAIN CEMENT CONCRETE CURB



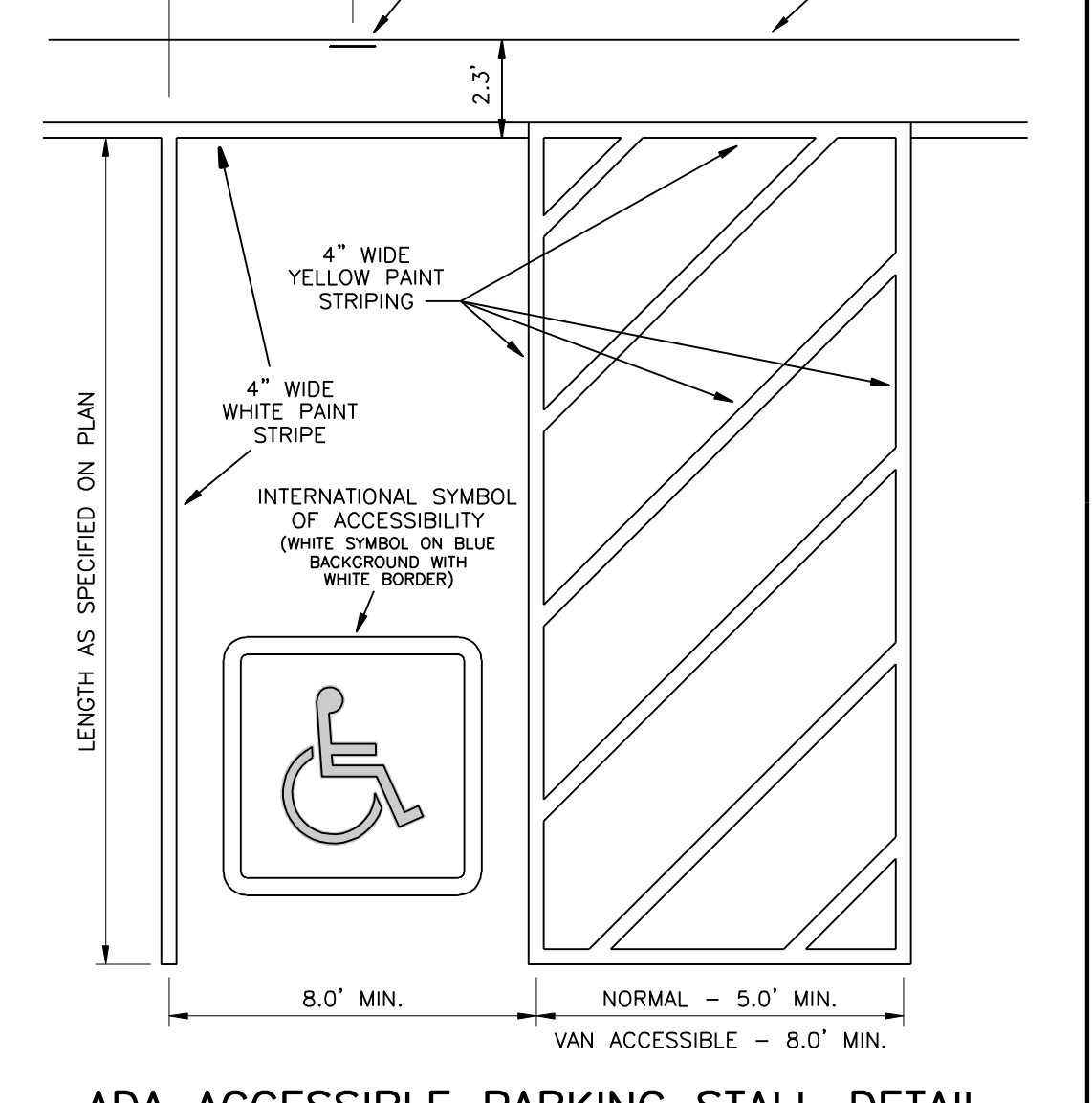
CONCRETE CURB
BOROUGH OF CHAMBERSBURG

DRAWN BY: BKF
CHK BY:
DATE: MARCH 2003
DWG NO. CHBG-C1-1



WALL-MOUNTED ADA ACCESSIBLE PARKING PLACARDS DETAIL NOT TO SCALE

ADA ACCESSIBLE PARKING STALL DETAIL



ADA ACCESSIBLE PARKING STALL DETAIL NOT TO SCALE

Site and Utility Plan
for
King Street Church Of The United Brethren In Christ
located in
Borough Of Chambersburg, Franklin County, PA

DENNIS E. BLACK ENGINEERING, INCORPORATED
ENGINEERING-SURVEYING-PLANNING
2400 PHILADELPHIA AVENUE 222 NORTH SECOND STREET
CHAMBERSBURG, PA 17201 McCONNELLSBURG, PA 17233
(717)263-8794 (888)238-0661 (717)485-4028

CLIENT No. 4215 ORDER No. 6779 SHEET 2 OF 2
DATE 2/20/2016 AutoCAD DRAWING REF. NUMBER
APP. GDW SCALE As Shown AutoCAD# 16-14
DRAWING No.

THE ORIGINAL DRAWING AND THE INFORMATION SHOWN THEREON ARE THE PROPERTY OF D. E. BLACK ENG., INC. AND SHALL NOT BE DUPLICATED WITHOUT WRITTEN PERMISSION

FILE:Land Projects 2013\6779 - 6-SiteandUtilityPlan.dwg LAYOUT:DetailSheet(S12) BY: Glenn Watson ON:3/30/2016 6:07 AM